



Ektron CMS400.NET Quick Start Manual

Version 4.7, Revision 4

Ektron® Inc.
5 Northern Blvd., Suite 6
Amherst, NH 03031
Tel: +1 603-594-0249
Fax: +1 603-594-0258
Email: sales@ektron.com
<http://www.ektron.com>

Copyright 2004 Ektron®, Inc. All rights reserved.

EKTRON is a registered trademark of Ektron, Inc.

Version 4.7, Revision 4, March 8, 2005

For updated versions of this manual, please visit:

<http://www.ektron.com/cms400-web-cms.aspx?id=1701>

EKTRON, INC. SOFTWARE LICENSE AGREEMENT

**** READ THIS BEFORE LOADING SOFTWARE ****

YOUR RIGHT TO USE THE PRODUCT DELIVERED IS SUBJECT TO THE TERMS AND CONDITIONS SET OUT IN THIS LICENSE AGREEMENT. USING THIS PRODUCT SIGNIFIES YOUR AGREEMENT TO THESE TERMS. IF YOU DO NOT AGREE TO THIS SOFTWARE LICENSE AGREEMENT, DO NOT DOWNLOAD.

CUSTOMER should carefully read the following terms and conditions before using the software program(s) contained herein (the "Software"). Downloading and/or using the Software or copying the Software onto CUSTOMER'S computer hard drive indicates CUSTOMER'S acceptance of these terms and conditions. If CUSTOMER does not agree with the terms of this agreement, CUSTOMER should not download.

Ektron, Inc. ("Ektron") grants, and the CUSTOMER accepts, a nontransferable and nonexclusive License to use the Software on the following terms and conditions:

1. Right to use: The Software is licensed for use only in delivered code form. Each copy of the Software is licensed for use only on a single URL. Each license is valid for the number of seats listed below (the "Basic Package"). Any use of the Software beyond the number of authorized seats contained in the Basic Package without paying additional license fees as provided herein shall cause this license to terminate. Should CUSTOMER wish to add seats beyond the seats licensed in the Basic Package, the CUSTOMER may add seats on a block basis at the then current price for additional seats (see product pages for current price). The Basic Packages are as follows:

Ektron CMS100 — Licensed for ten seats (10 named users) per URL.

Ektron CMS200 — Licensed for ten seats (10 named users) per URL.

Ektron CMS300 — Licensed for ten seats (10 named users) per URL.

Ektron CMS400.NET — Licensed for ten seats (10 named users) per URL.

Ektron eWebEditPro — Licensed for ten seats (10 named users) per URL.

Ektron eWebEditPro+XML — Licensed for ten seats (10 named users) per URL.

For purposes of this section, the term "seat" shall mean an individual user provided access to the capabilities of the Software.

The CUSTOMER may not modify, alter, reverse engineer, disassemble, or decompile the Software. This software product is licensed, not sold.

2. Duration: This License shall continue so long as CUSTOMER uses the Software in compliance with this License. Should CUSTOMER breach any of its obligations hereunder, CUSTOMER agrees to return all copies of the Software and this License upon notification and demand by Ektron.

3. Copyright: The Software (including any images, "applets," photographs, animations, video, audio, music and text incorporated into the Software) as well as any accompanying written materials (the "Documentation") is owned by Ektron or its suppliers, is protected by United States copyright laws and international treaties, and contains confidential information and trade secrets. CUSTOMER agrees to protect the confidentiality of the Software and Documentation. CUSTOMER agrees that it will not provide a copy of this Software or Documentation nor divulge any proprietary information of Ektron to any person, other than its employees, without the prior consent of Ektron; CUSTOMER shall use its best efforts to see that any user of the Software licensed hereunder complies with this license.

4. Limited Warranty: Ektron warrants solely that the medium upon which the Software is delivered will be free from defects in material and workmanship under normal, proper and intended usage for a period of three (3) months from the date of receipt. Ektron does not warrant the use of the Software will be uninterrupted or error free, nor that program errors will be corrected. This limited warranty shall not apply to any error or failure resulting from (i) machine error, (ii) Customer's failure to follow operating instructions, (iii) negligence or accident, or (iv) modifications to the Software by any person or entity other than Company. In the event of a breach of warranty, Customer's sole and exclusive remedy, is repair of all or any portion of the Software. If such remedy fails of its essential purpose, Customer's sole remedy and Ektron's maximum liability shall be a refund of the paid purchase price for the defective Products only. This limited warranty is only valid if Ektron receives written notice of breach of warranty within thirty days after the warranty period expires.

5. Limitation of Warranties and Liability: THE SOFTWARE AND DOCUMENTATION ARE SOLD "AS IS" AND WITHOUT ANY WARRANTIES AS TO THE PERFORMANCE, MERCHANTABILITY, DESIGN, OR OPERATION OF THE SOFTWARE. NO WARRANTY OF FITNESS FOR A PARTICULAR PURPOSE IS OFFERED. EXCEPT AS DESCRIBED IN SECTION 4, ALL WARRANTIES EXPRESS AND IMPLIED ARE HEREBY DISCLAIMED.

NEITHER COMPANY NOR ITS SUPPLIERS SHALL BE LIABLE FOR ANY LOSS OF PROFITS, LOSS OF BUSINESS OR GOODWILL, LOSS OF DATA OR USE OF DATA, INTERRUPTION OF BUSINESS NOR FOR ANY OTHER INDIRECT, SPECIAL, INCIDENTAL, OR CONSEQUENTIAL DAMAGES OF ANY KIND UNDER OR ARISING OUT OF, OR IN ANY RELATED TO THIS AGREEMENT, HOWEVER, CAUSED, WHETHER FOR BREACH OF WARRANTY, BREACH OR REPUDIATION OF CONTRACT, TORT, NEGLIGENCE, OR OTHERWISE, EVEN IF COMPANY OR ITS REPRESENTATIVES HAVE BEEN ADVISED OF THE POSSIBILITY OF SUCH LOSS.

6. Miscellaneous: This License Agreement, the License granted hereunder, and the Software may not be assigned or in any way transferred without the prior written consent of Ektron. This Agreement and its performance and all claims arising from the relationship between the parties contemplated herein shall be governed by, construed and enforced in accordance with the laws of the State of New Hampshire without regard to conflict of laws principles thereof. The parties agree that any action brought in connection with this Agreement shall be maintained only in a court of competent subject matter jurisdiction located in the State of New Hampshire or in any court to which appeal therefrom may be taken. The parties hereby consent to the exclusive personal jurisdiction of such courts in the State of New Hampshire for all such purposes. The United Nations Convention on Contracts for the International Sale of Goods is specifically excluded from governing this License. If any provision of this License is to be held unenforceable, such holding will not affect the validity of the other provisions hereof. Failure of a party to enforce any provision of this Agreement shall not constitute or be construed as a waiver of such provision or of the right to enforce such provision. If you fail to comply with any term of this License, YOUR LICENSE IS AUTOMATICALLY TERMINATED. This License represents the entire understanding between the parties with respect to its subject matter.

YOU ACKNOWLEDGE THAT YOU HAVE READ THIS AGREEMENT, THAT YOU UNDERSTAND THIS AGREEMENT, AND UNDERSTAND THAT BY CONTINUING THE INSTALLATION OF THE SOFTWARE, BY LOADING OR RUNNING THE SOFTWARE, OR BY PLACING OR COPYING THE SOFTWARE ONTO YOUR COMPUTER HARD DRIVE, YOU AGREE TO BE BOUND BY THIS AGREEMENT'S TERMS AND CONDITIONS. YOU FURTHER AGREE THAT, EXCEPT FOR WRITTEN SEPARATE AGREEMENTS BETWEEN EKTRON AND YOU, THIS AGREEMENT IS A COMPLETE AND EXCLUSIVE STATEMENT OF THE RIGHTS AND LIABILITIES OF THE PARTIES.

Copyright 1999 - 2005 Ektron, Inc. All rights reserved.

LA10031, Revision 1.5

Trademarks

All terms in this manual that are known to be trademarks have been capitalized. Ektron, Inc. cannot attest to the accuracy of this information. Use of a term in this manual does not affect the validity of any trademark.

The following trademarks might appear in Ektron manuals:

Active Directory®, ActiveX®, Authenticode®, BackOffice®, ClearType®, Developer Studio®, FrontPage®, IntelliSense®, JScript®, Microsoft®, MS-DOS®, SharePoint®, Visual C++®, Visual C#®, Visual InterDev®, Visual J++®, Visual J#®, Visual Studio®, Visual Web Developer™, Win32®, Win32s®, Windows®, Windows NT®, Windows Server™, Windows Server System™, Netscape®, Netscape Navigator®, Mozilla™, Firefox™

Table of Contents

Introduction	1
Selecting the Sample Site	1
Logging Into the Sample Web Site	1
Entering the Work Area	3
Selecting and Editing a Content Block	5
Selecting a Content Block	5
Editing a Content Block	6
Installing eWebEditPro for Netscape and Firefox Users ..	7
Publishing Content	7
Closing the Work Area	8
Logging Out of the Sample Site	8
More Information	9

Introduction

Welcome to the Ektron CMS400 Quick Start Manual. The purpose of the manual is to quickly get you using Ektron CMS400; in it we will cover the following:

- "Selecting the Sample Site" on page 1
- "Logging Into the Sample Web Site" on page 1
- "Entering the Work Area" on page 3
- "Selecting and Editing a Content Block" on page 5
- "Installing eWebEditPro for Netscape and Firefox Users" on page 7
- "Publishing Content" on page 7
- "Closing the Work Area" on page 8
- "Logging Out of the Sample Site" on page 8
- "More Information" on page 9

Selecting the Sample Site

1. On the desktop, click **Start > Programs > Ektron > CMS400 > CMS400 Examples**.

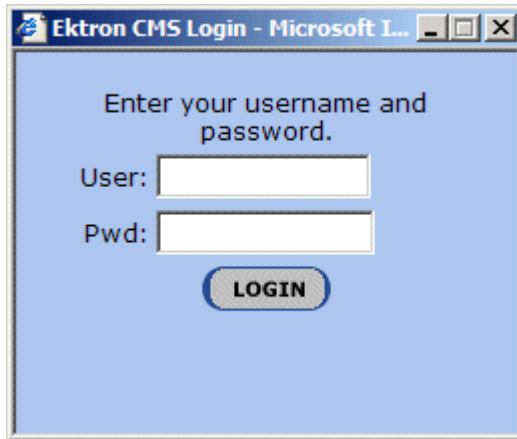
NOTE It is **STRONGLY** recommended that you use the CMS400 Intranet site while reading this Quick Start manual.

2. In the browser, click **Intranet example**
 3. The sample Website's Home page appears.
- Now, you can check out the sample site by clicking on any of the links.

The next section explains how to log in.

Logging Into the Sample Web Site

1. Click the **Login** button at the lower left corner of the page.
2. The login dialog box appears.



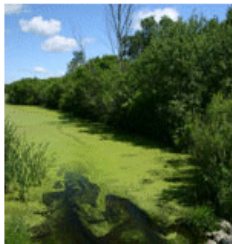
3. Enter your **username** and **password**.
User: **jedit** Pwd: **jedit**
Or you can use:
User: **admin** Pwd: **admin**
4. Click the **Login** button.
5. The home page refreshes.

You can navigate around your Web site as you could before signing in. But now, a colored box surrounds the content when you move the cursor over it (illustrated below). This is a content block.



Our Company

At the heart of Acme is our commitment to our customers, and our dedication to finding a better way to conduct business effectively and efficiently. Our mission is to develop best-of breed solutions that encompass scalability, flexibility, and ease-of-use without losing focus of being affordable.



In 1998, William Acme founded Acme Services — based on the philosophy that services should be simple and affordable. Today, Acme is based on the same principle.

Acme released its first product, a services tool that allows users to deliver services quickly and easily. Because this tool is so easy to integrate and use, sales quickly grew and Acme expanded with offices in Amherst, New Hampshire, the United Kingdom, and Germany. Acme's services tool has become a leader in the industry, and partnerships have been made with every major services vendor.

As a result, Mr. Acme and his team have had the unique opportunity to work with and listen to thousands of service providers learning exactly how they were using Acme's tool, as well as what challenges they faced and what they most valued in a services solution. Based on this valuable feedback, Acme developed its first services management platform solution built around Acme's market-leading tool. The response was outstanding, as it became immediately clear that there was a real need for services management solutions that are easy-to-use and integrate.

Today, Acme's family of products has evolved and grown—with tools and solutions that encompass the latest technologies and solve everyday services problems.

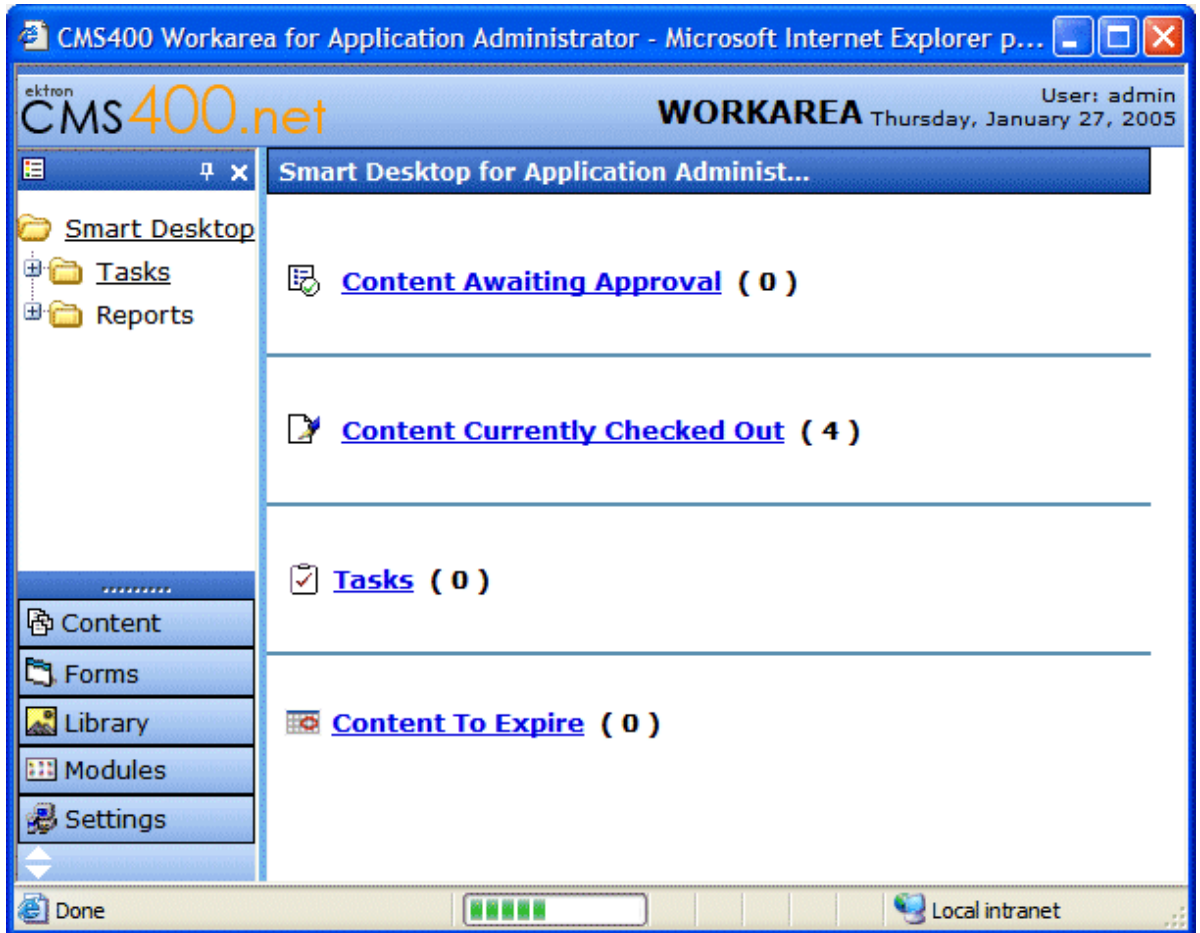
For more information on what the colors represent, please consult the Ektron CMS400 Users Guide, Appendix A: Content Statuses.

Entering the Work Area

The Workarea is a central screen from which you can perform all activities within Ektron CMS400.

1. Hover your mouse pointer over a content block.
2. Right click on the content block.

5. The workarea appears.



Selecting and Editing a Content Block

Now that you have entered the Workarea, you can select and edit a content block.

Selecting a Content Block

1. Click **Content** from the lower left side of the workarea.
2. The View Contents of Folder screen appears.
3. Select the **Intranet** Folder.
4. Under the Title column, click **Corporate**.
5. The Corporate Content screen appears.

Editing a Content Block

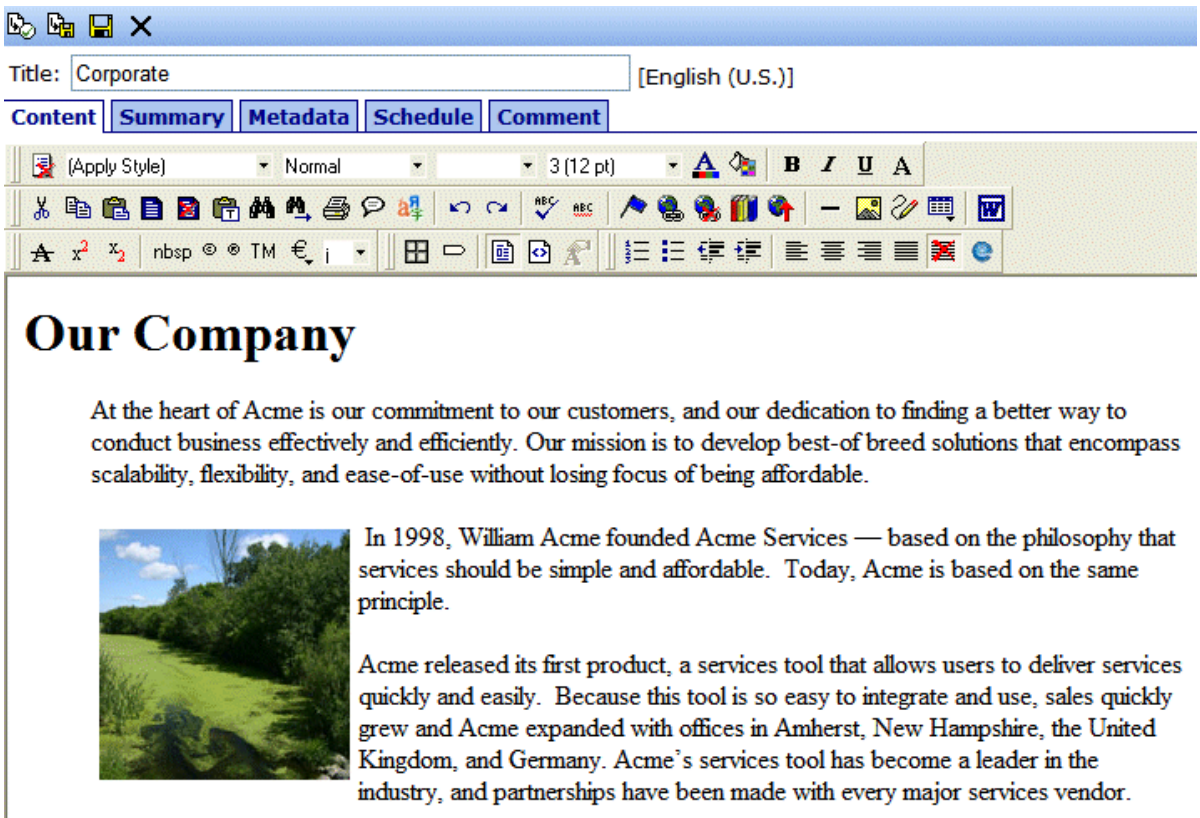
Now you can edit the content block. Let's change the word **heart** to **core** to learn how to edit.


1. Click the **Edit** button () located above the tabs.


NOTE The first time you edit a content block, you need to install eWebEditPro with WebImageFX. Please follow the instructions on the pop-up screen. **THE INSTALLATION ONLY HAPPENS ONCE.**

NOTE Netscape and Firefox Users, go to "Installing eWebEditPro for Netscape and Firefox Users" on page 7 for special install instructions.

2. The editor appears.



3. Double click the word **heart**. (This selects the word).
4. Type **core**.
5. Click the **Checkin** button () above the tabs.

-
6. The view contents screen reappears.
 7. To see the changes that will take place, click the **View Diff** button () located above the tabs. This screen indicates the changes that will occur when the content block is published.
 8. Click the **X** in the toolbar to close this window.

Installing eWebEditPro for Netscape and Firefox Users

When a client first accesses a Web page that hosts **eWebEditPro**, the browser displays a text box where **eWebEditPro** should appear.

Below the box are instructions that direct the user to click some text to begin installation.

1. Click the text.
2. A standard Windows dialog box for saving a file appears. Save the file (ewebeditproclient.exe) to a directory on the client's hard drive.
3. Close all open Netscape or Firefox Windows.
4. Using Windows Explorer, go to the directory where you saved the file and double click the saved file.
5. You are prompted to select a language for the installation windows. This language affects only the installation, and has no effect on using eWebEditPro. (To learn more about changing the language of eWebEditPro, see the chapter "Modifying the Language of eWebEditPro" in the Developer's Reference Guide.)
6. A series of dialog boxes guides you through the rest of the installation.

After completing the installation, log in to the sample site and continue "Editing a Content Block" step 2.

Publishing Content

Now you can publish the "Home Page Content" content block.

1. Click the **Publish** button () located above the tabs. This publishes your changes to the Intranet Web site.

NOTE

On your web site, you can set up a group of approvers to review a content block before it goes to the live site.

2. Click on the open browser window that shows the Intranet Web site.
3. Click your browser's Refresh button.
4. The page refreshes.
5. Notice that, under "Our Company" **heart** has been replaced with **core**.

Congratulations! You've just published your first content block.



Now you can go back, close the work area, and log out.

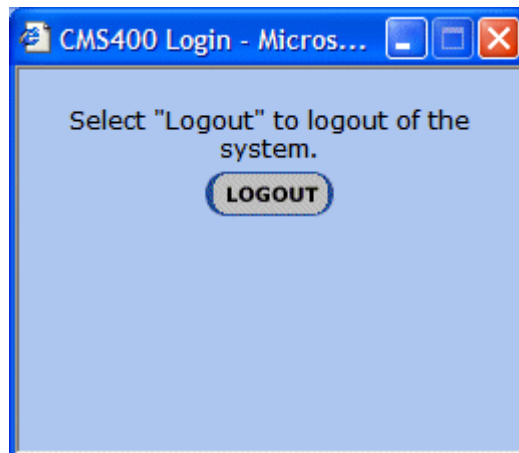
Closing the Work Area

To close the workarea, click the **X** in the upper right corner of the window. When you close the workarea, you return to the Ektron CMS400 view of your Web site. You do not exit (Logout) from Ektron CMS400.

Logging Out of the Sample Site

To log out of Ektron CMS400, follow these steps.

1. Click the **Logout** button () in a content block's floating toolbar, or click the **Logout** button  located on the bottom right of the page.
2. The Logout dialog box appears.



-
3. Click the **Logout** button.
 4. The page refreshes, the home page reappears.

More Information

Thank you for taking the time to go through this Quick Start Manual. For more information on other great features, please use the following tools.

The Ektron CMS400 User Manual

The Ektron CMS400 Administrator Manual

Or, visit the Ektron Learning Center Website at the following link for animated tutorials and other feature explanations.

<http://www.ektron.com/cms400-web-cms.aspx?id=922>