



Ektron CMS400.NET Extensibility Editor Manual

Version 7.5, Rev 1

Ektron® Inc.
542 Amherst Street
Nashua, NH 03063
Tel: +1 603-594-0249
Fax: +1 603-594-0258
Email: sales@ektron.com
<http://www.ektron.com>

Copyright 2007 Ektron®, Inc. All rights reserved.

EKTRON is a registered trademark of Ektron, Inc.

Version 7.5, Rev 1, October 11, 2007

For updated versions of this manual, please visit:
<http://www.ektron.com/web-content-management-solutions.aspx?id=4020>

EKTRON, INC. SOFTWARE LICENSE AGREEMENT

**** READ THIS BEFORE LOADING SOFTWARE ****

YOUR RIGHT TO USE THE PRODUCT DELIVERED IS SUBJECT TO THE TERMS AND CONDITIONS SET OUT IN THIS LICENSE AGREEMENT. USING THIS PRODUCT SIGNIFIES YOUR AGREEMENT TO THESE TERMS. IF YOU DO NOT AGREE TO THIS SOFTWARE LICENSE AGREEMENT, DO NOT DOWNLOAD.

CUSTOMER should carefully read the following terms and conditions before using the software program(s) contained herein (the "Software"). Downloading and/or using the Software or copying the Software onto CUSTOMER'S computer hard drive indicates CUSTOMER'S acceptance of these terms and conditions. If CUSTOMER does not agree with the terms of this agreement, CUSTOMER should not download.

Ektron, Inc. ("Ektron") grants, and the CUSTOMER accepts, a nontransferable and nonexplosive License to use the Software on the following terms and conditions:

1. Right to use: The Software is licensed for use only in delivered code form. Each copy of the Software is licensed for use only on a single URL. Each license is valid for the number of seats listed below (the "Basic Package"). Any use of the Software beyond the number of authorized seats contained in the Basic Package without paying additional license fees as provided herein shall cause this license to terminate. Should CUSTOMER wish to add seats beyond the seats licensed in the Basic Package, the CUSTOMER may add seats on a block basis at the then current price for additional seats (see product pages for current price). The Basic Packages are as follows:

Ektron CMS300 - Licensed for ten seats (10 named users) per URL.

Ektron CMS400.NET - Licensed for ten seats (10 named users) per URL.

Ektron eWebEditPro - Licensed for ten seats (10 named users) per URL.

Ektron eWebEditPro+XML - Licensed for ten seats (10 named users) per URL.

For purposes of this section, the term "seat" shall mean an individual user provided access to the capabilities of the Software.

The CUSTOMER may not modify, alter, reverse engineer, disassemble, or decompile the Software. This software product is licensed, not sold.

2. Duration: This License shall continue so long as CUSTOMER uses the Software in compliance with this License. Should CUSTOMER breach any of its obligations hereunder, CUSTOMER agrees to return all copies of the Software and this License upon notification and demand by Ektron.

3. Copyright: The Software (including any images, "applets," photographs, animations, video, audio, music and text incorporated into the Software) as well as any accompanying written materials (the "Documentation") is owned by Ektron or its suppliers, is protected by United States copyright laws and international treaties, and contains confidential information and trade secrets. CUSTOMER agrees to protect the confidentiality of the Software and Documentation. CUSTOMER agrees that it will not provide a copy of this Software or Documentation nor divulge any proprietary information of Ektron to any person, other than its employees, without the prior consent of Ektron; CUSTOMER shall use its best efforts to see that any user of the Software licensed hereunder complies with this license.

4. Limited Warranty: Ektron warrants solely that the medium upon which the Software is delivered will be free from defects in material and workmanship under normal, proper and intended usage for a period of three (3) months from the date of receipt. Ektron does not warrant the use of the Software will be uninterrupted or error free, nor that program errors will be corrected. This limited warranty shall not apply to any error or failure resulting from (i) machine error, (ii) Customer's failure to follow operating instructions, (iii) negligence or accident, or (iv) modifications to the Software by any person or entity other than Company. In the event of a breach of warranty, Customer's sole and exclusive remedy, is repair of all or any portion of the Software. If such remedy fails of its essential purpose, Customer's sole remedy and Ektron's maximum liability shall be a refund of the paid purchase price for the defective Products only. This limited warranty is only valid if Ektron receives written notice of breach of warranty within thirty days after the warranty period expires.

5. Limitation of Warranties and Liability: THE SOFTWARE AND DOCUMENTATION ARE SOLD "AS IS" AND WITHOUT ANY WARRANTIES AS TO THE PERFORMANCE, MERCHANTABILITY, DESIGN, OR OPERATION OF THE SOFTWARE. NO WARRANTY OF FITNESS FOR A PARTICULAR PURPOSE IS OFFERED. EXCEPT AS DESCRIBED IN SECTION 4, ALL WARRANTIES EXPRESS AND IMPLIED ARE HEREBY DISCLAIMED.

NEITHER COMPANY NOR ITS SUPPLIERS SHALL BE LIABLE FOR ANY LOSS OF PROFITS, LOSS OF BUSINESS OR GOODWILL, LOSS OF DATA OR USE OF DATA, INTERRUPTION OF BUSINESS NOR FOR ANY OTHER INDIRECT, SPECIAL, INCIDENTAL, OR CONSEQUENTIAL DAMAGES OF ANY KIND UNDER OR ARISING OUT OF, OR IN ANY RELATED TO THIS AGREEMENT, HOWEVER CAUSED, WHETHER FOR BREACH OF WARRANTY, BREACH OR REPUDIATION OF CONTRACT, TORT, NEGLIGENCE, OR OTHERWISE, EVEN IF COMPANY OR ITS REPRESENTATIVES HAVE BEEN ADVISED OF THE POSSIBILITY OF SUCH LOSS.

6. Miscellaneous: This License Agreement, the License granted hereunder, and the Software may not be assigned or in any way transferred without the prior written consent of Ektron. This Agreement and its performance and all claims arising from the relationship between the parties contemplated herein shall be governed by, construed and enforced in accordance with the laws of the State of New Hampshire without regard to conflict of laws principles thereof. The parties agree that any action brought in connection with this Agreement shall be maintained only in a court of competent subject matter jurisdiction located in the State of New Hampshire or in any court to which appeal therefrom may be taken. The parties hereby consent to the exclusive personal jurisdiction of such courts in the State of New Hampshire for all such purposes. The United Nations Convention on Contracts for the International Sale of Goods is specifically excluded from governing this License. If any provision of this License is to be held unenforceable, such holding will not affect the validity of the other provisions hereof. Failure of a party to enforce any provision of this Agreement shall not constitute or be construed as a waiver of such provision or of the right to enforce such provision. If you fail to comply with any term of this License, YOUR LICENSE IS AUTOMATICALLY TERMINATED. This License represents the entire understanding between the parties with respect to its subject matter.

YOU ACKNOWLEDGE THAT YOU HAVE READ THIS AGREEMENT, THAT YOU UNDERSTAND THIS AGREEMENT, AND UNDERSTAND THAT BY CONTINUING THE INSTALLATION OF THE SOFTWARE, BY LOADING OR RUNNING THE SOFTWARE, OR BY PLACING OR COPYING THE SOFTWARE ONTO YOUR COMPUTER HARD DRIVE, YOU AGREE TO BE BOUND BY THIS AGREEMENT'S TERMS AND CONDITIONS. YOU FURTHER AGREE THAT, EXCEPT FOR WRITTEN SEPARATE AGREEMENTS BETWEEN EKTRON AND YOU, THIS AGREEMENT IS A COMPLETE AND EXCLUSIVE STATEMENT OF THE RIGHTS AND LIABILITIES OF THE PARTIES.

Copyright 1999 - 2006 Ektron, Inc. All rights reserved.

LA10031, Revision 1.7

Table of Contents

Table of Contents	i
Configuring a Plug-in Extension	1
Opening the Extensibility Configuration Editor	1
Viewing Plug-in Extensions in the Extensibility Configuration Editor	1
The Extensibility Configuration Editor's Toolbar	3
Setting Plug-in Extension and Event Properties	3
Property List	6
Applying Plug-ins and Events to Specific Sites	7
Determining What Happens After an Error Occurs	9
Setting the Information Properties in the Plug-in Code	10
Enabling and Disabling Plug-ins and Events	11
Setting the Plug-in Order of Execution by Event	12
Supporting Documents	14
Support	14
Sales	14
Information	14



Configuring a Plug-in Extension

Once you have created a Plug-in Extension, the Extensibility Configuration Editor allows you to:

- prioritize plug-ins and events
- enable or disable them
- assign them to a specific site when using multiple sites with CMS400.NET
- see a description of the plug-in or event
- see who created a plug-in or event

By prioritizing the plug-ins and events you can set the order of execution for events of the same type that appear in multiple plug-ins. See *Also*: "[Setting the Plug-in Order of Execution by Event](#)" on page 12

Enabling and disabling plug-ins allows you to temporarily disable a plug-in or event without disabling the rest of the plug-ins and events. See *Also*: "[Enabling and Disabling Plug-ins and Events](#)" on page 11

If you are using the Multi-site support in CMS400.NET, you can assign a plug-in or event to a specific site. This allows you to build a Plug-in that might be used in multiple sites, but contain an event that you only want applied to a single site. See *Also*: "[Applying Plug-ins and Events to Specific Sites](#)" on page 7

The Extensibility Configuration Editor exists on your CMS400.NET server. For the editor to work with an Extension Plug-in, the plug-in needs to be in the watch folder `C:\Program Files\Ektron\Plugins\Extensions` located on the Ektron CMS400.NET server.

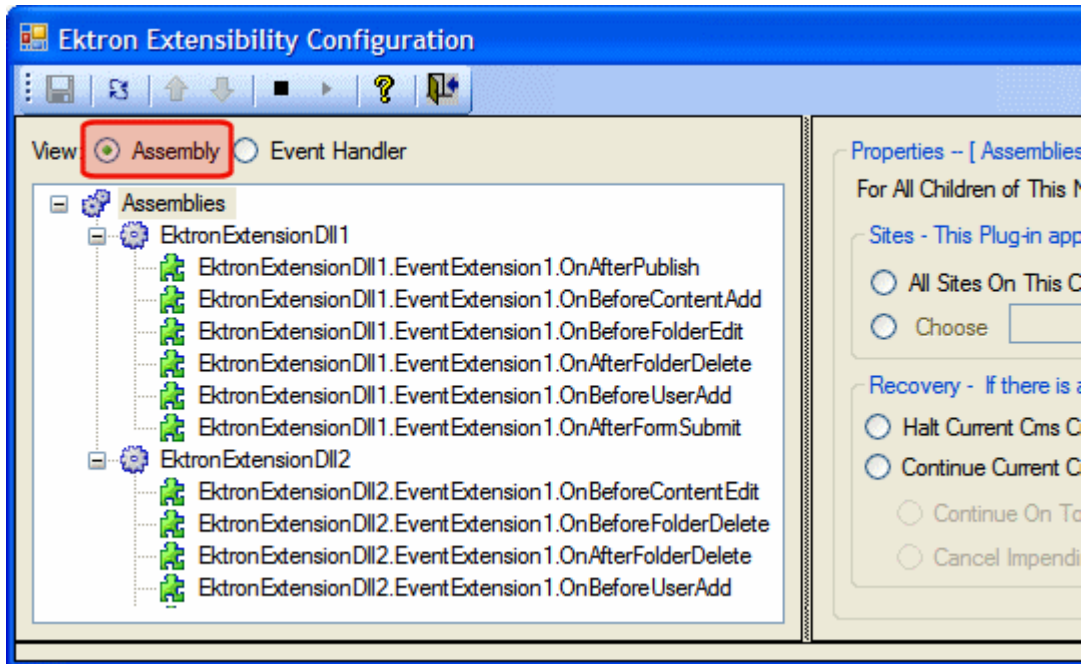
Opening the Extensibility Configuration Editor

To view Plug-in Extensions in the Extensibility Configuration Editor, click **Start > Programs > CMS400 > Utilities > Plug-in Configuration** on your CMS400.NET server. You can also access the editor using the `ConfigurationUtility.exe` file located in: `C:\Program Files\Ektron\CMS400SDK`.

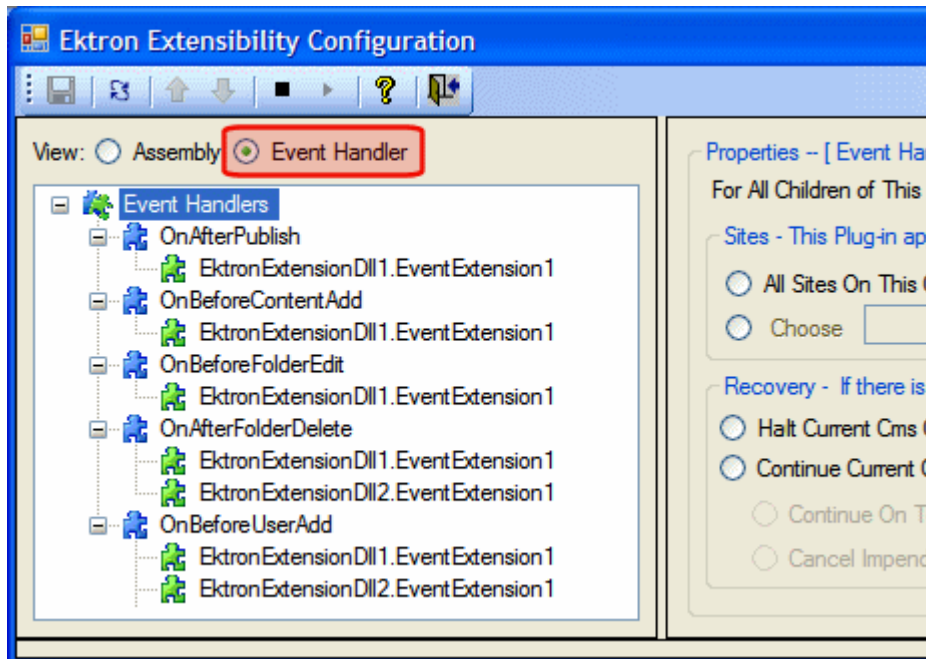
Viewing Plug-in Extensions in the Extensibility Configuration Editor

The Extension Plug-ins in the Extensibility Configuration Editor are displayed in a Tree format that enables you to show or hide each branch of the tree.

You can view the plug-in Extensions by Assembly or by Event Handler. When viewing by Assembly, you see each Plug-in Extension with all of the events for that extension nested below it.











When viewing by Event Handler, you see each event with all of the Plug-in Extensions it belongs to nested below it.



The Extensibility Configuration Editor's Toolbar

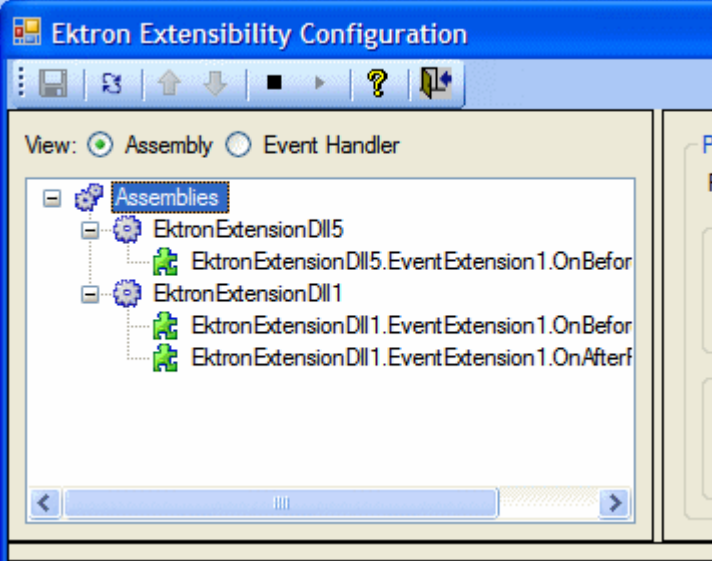
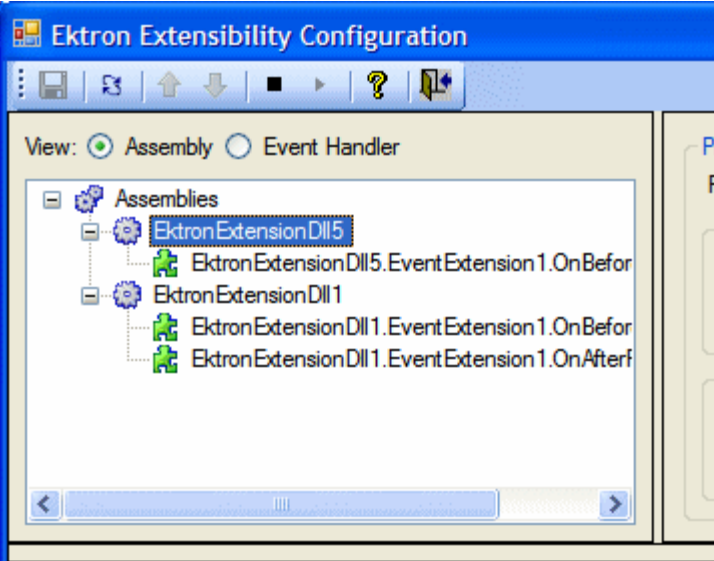
The plug-in toolbar allows you to Save settings, Refresh, Start and Stop, and Reorder plug-ins and events.

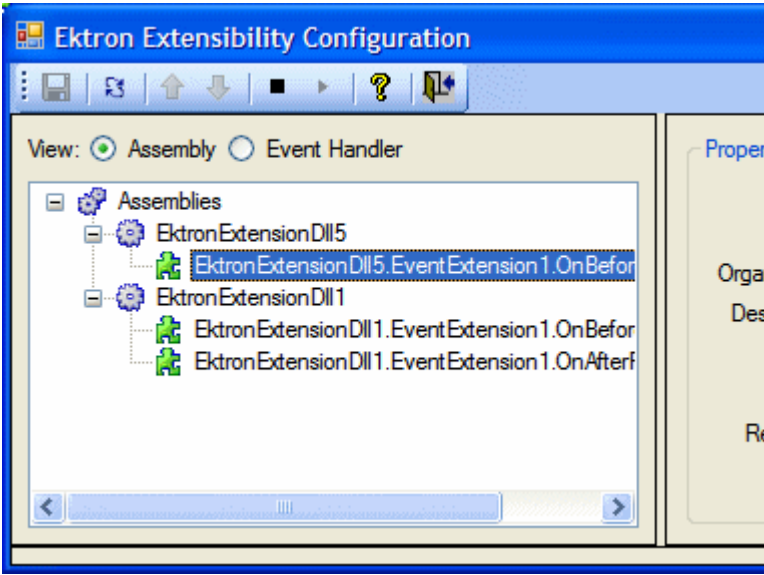
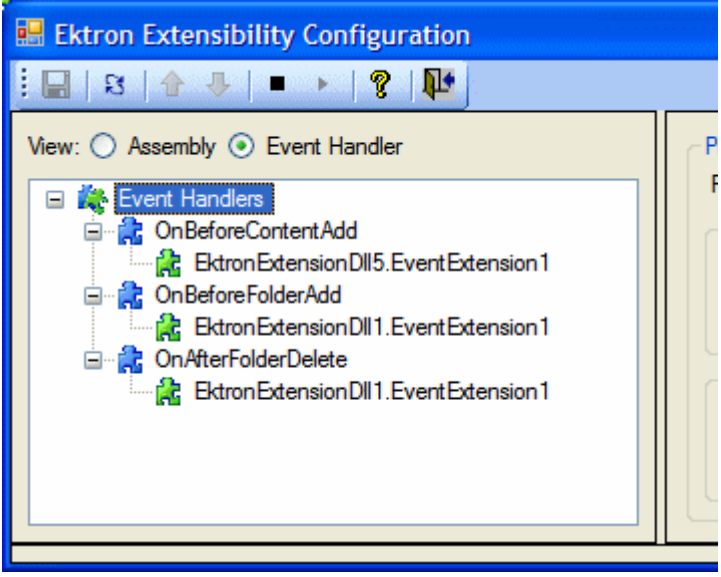
The table below shows each toolbar button and its description.

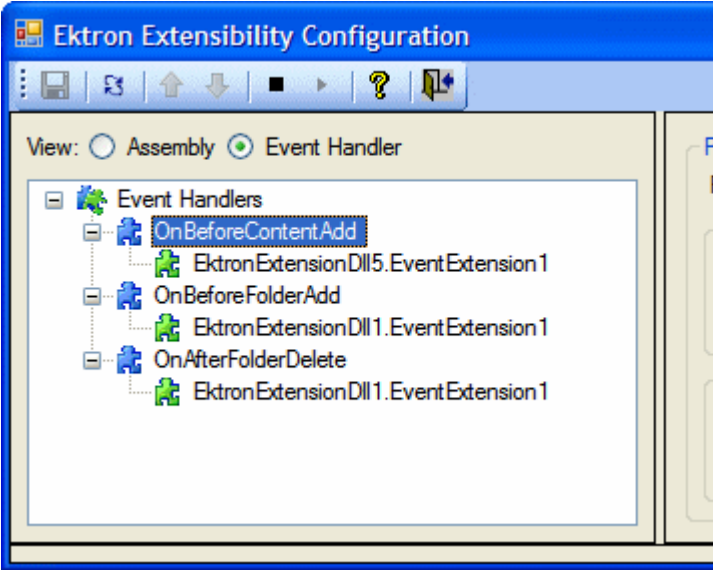
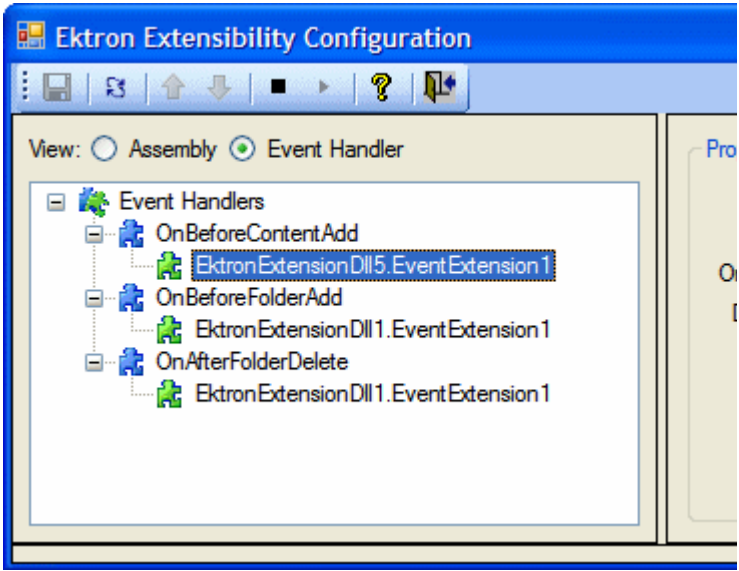
Command	Button	Description	See Also
Save		Saves the changes made in the editor.	
Refresh		Refreshes the editor and displays any new plug-ins that are added to the Extensions folder.	
Move Event Up		Moves an event to a higher priority when multiple events of the same type are used.	"Setting the Plug-in Order of Execution by Event" on page 12
Move Event Down		Moves an event to a lower priority when multiple events of the same type are used.	"Setting the Plug-in Order of Execution by Event" on page 12
Disable Selected Event		Stops the event or plug-in from running.	"Enabling and Disabling Plug-ins and Events" on page 11
Enable Selected Event		Starts the event or plug-in.	"Enabling and Disabling Plug-ins and Events" on page 11
Help		Launches help information.	
Close Editor		Exits the editor.	

Setting Plug-in Extension and Event Properties

When using the Assembly view, you can set properties at the Assemblies level, the Plug-in Extension level or at the event level. When using the Event Handler view, you can set properties at the Event Handler level, the Event level or the Plug-in Extension level. The table below explains the different levels.

Level	Where the Level Appears in the Editor
<p>Assembly View</p> <p>Assemblies - All plug-ins and events below this level use the properties applied to this level.</p>	 <p>The screenshot shows the 'Ektron Extensibility Configuration' window with the 'View' set to 'Assembly'. The tree view is expanded to show the 'Assemblies' folder, which is highlighted with a blue selection box. Under 'Assemblies', there are two sub-folders: 'EktronExtensionDll5' and 'EktronExtensionDll1'. Each sub-folder contains event handlers: 'EktronExtensionDll5.EventExtension 1.OnBefore' and 'EktronExtensionDll1.EventExtension 1.OnBefore' are under their respective folders, and 'EktronExtensionDll1.EventExtension 1.OnAfter' is also visible under the 'EktronExtensionDll1' folder.</p>
<p>Plug-in Extension - The plug-in you choose and all the events associated with that plug-in use the same properties.</p>	 <p>This screenshot is identical to the one above, showing the same tree structure. However, the selection box is now positioned over the 'EktronExtensionDll5' folder, indicating that this specific plug-in is selected.</p>

Level	Where the Level Appears in the Editor
<p>Event - Properties are assigned to each individual event.</p>	
Event Handler View	
<p>Event Handler - All events and plug-ins below this level use the properties applied to this level.</p>	

Level	Where the Level Appears in the Editor
<p>Event - The event you choose and all the plug-ins associated with that event use the same properties.</p>	 <p>The screenshot shows the 'Ektron Extensibility Configuration' window with the 'Event Handler' view selected. The tree view shows three event handlers: 'OnBeforeContentAdd', 'OnBeforeFolderAdd', and 'OnAfterFolderDelete'. Each event handler has one or more associated plug-ins, all labeled as 'EktronExtensionDll1.EventExtension1'.</p>
<p>Plug-in Extension - Properties are assigned to each plug-in.</p>	 <p>The screenshot shows the same 'Ektron Extensibility Configuration' window. In this view, the 'OnBeforeContentAdd' event handler is selected, and its specific plug-in, 'EktronExtensionDll5.EventExtension1', is highlighted in the tree view.</p>

Property List

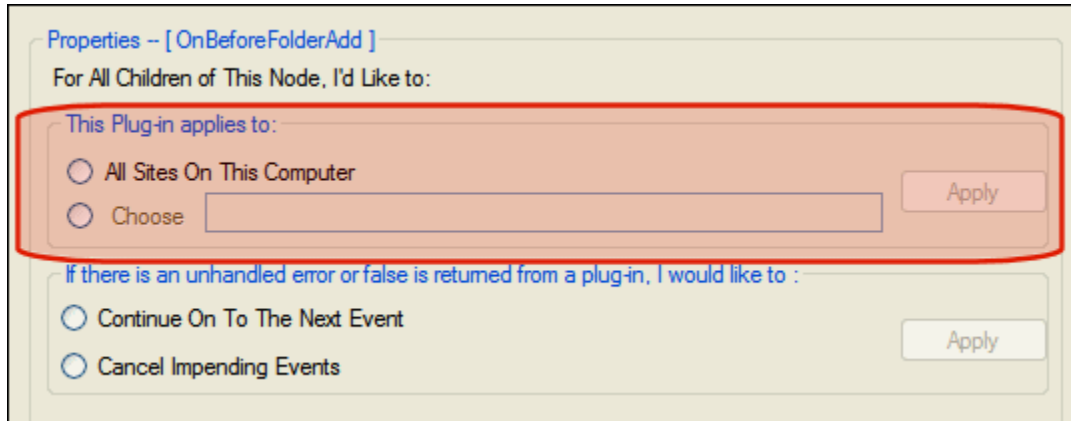
The following table lists the properties contained in the Extensibility Configuration Editor.

Property	Description	See Also
Sites This Plug-in Applies to:	Choose the sites to which this plug-in or event applies. You need only choose a site if you are using Multi-site support.	"Applying Plug-ins and Events to Specific Sites" on page 7 and The Administrator Manual section "Managing Your CMS400 System" > "Support for Multiple Sites"
Recovery If there is an unhandled error or false is returned from a plug-in, I would like to:	Choose what happens when there is an unhandled error.	"Determining What Happens After an Error Occurs" on page 9
Name	The name of the plug-in or event is displayed. This property is set in the plug-in's code.	"Setting the Information Properties in the Plug-in Code" on page 10
Author	The author of the plug-in or event. This property is set in the plug-in's code.	"Setting the Information Properties in the Plug-in Code" on page 10
Organization	The organization or company that created the plug-in or event. This property is set in the Plug-in's code.	"Setting the Information Properties in the Plug-in Code" on page 10
Status	Decide whether plug-ins and events are enabled or disable.	"Enabling and Disabling Plug-ins and Events" on page 11
Order	Decide the order of execution for events of the same type that appear in multiple plug-ins. For example, if the OnBeforeContentAdd event appears in EktronExtDLL5.EventExt1 and EktronExtDLL2.EventExt1, you can choose which plug-in's event is executed first.	"Setting the Plug-in Order of Execution by Event" on page 12

Applying Plug-ins and Events to Specific Sites

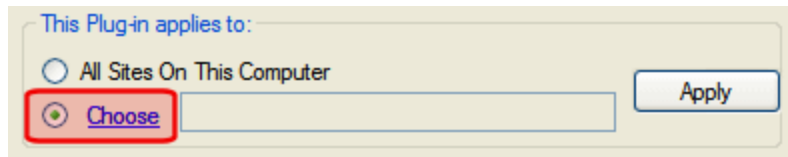
If you are using the Multi-site Support feature in CMS400.NET, you may find it necessary to apply a plug-in or event to one site and not another. To accomplish this, use the Sites property. It allows you to assign events and plug-ins to all the

sites on a server or to select sites on the server. For example, you are appending HTML content by applying a company's copyright information to a site and you are supporting multiple sites with CMS400.NET.

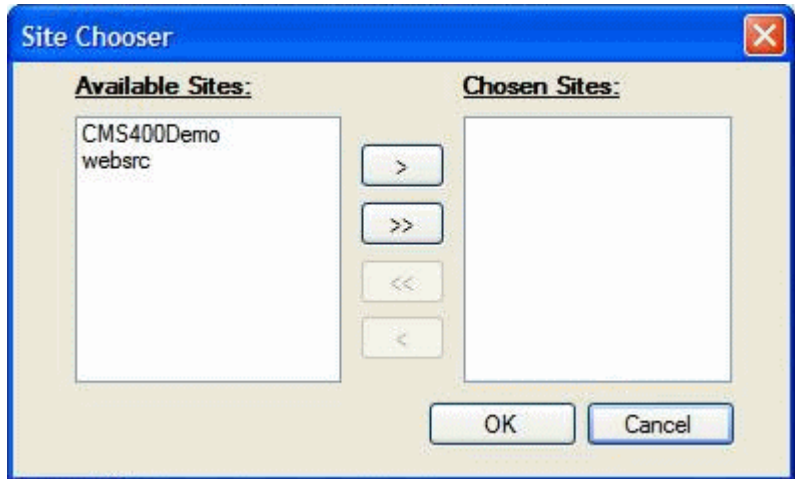


To apply a plug-in or event to a specific site, follow these steps.

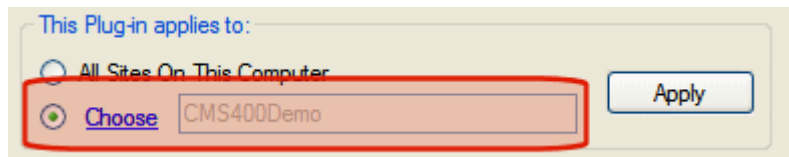
1. Open the Ektron Extensibility Configuration Editor by clicking **Start > Programs > CMS400 > Utilities > Plug-in Configuration**.
2. Click the plug-in or event in the menu tree.
3. Under the Sites property, select either **All Sites on This Computer** or **Choose** radio buttons. The first time you select the Choose radio button, the Site Chooser screen appears.




NOTE If the Site Chooser screen does not appear when you click the **Choose** radio button, click the **Choose** hyperlink next to the radio button.



4. Highlight the sites in the **Available Sites** column to which the plug-in or event will be assigned.
5. Click the > button to move the selected sites to the **Chosen Sites** column. Click >> to move all of the sites. To remove a selection from the **Chosen Sites** column, highlight it and click the < button. To remove all selections, click the << button.
6. Click **OK**.
7. The chosen sites appear in the text box.



8. Click **Apply**.
9. Click the Save () button.


Determining What Happens After an Error Occurs

The Recovery property allows you to decide how to handle errors that arise when utilizing plug-ins and events. For this property there are two choices:

- **Halt Current CMS Operation** - in the event of an unhandled error, this selection stops the current operation completely. For example, if you publish a piece of content and the OnBeforePublish event has an unhandled error, the content is not published and the error message associated with the action is displayed.
- **Continue Current CMS Operation** - when this option is selected, the choices below are available.

-
- **Continue On to the Next Event** - in the event of an unhandled error, the process moves to the next event. For example, if you had three plug-ins that contained the OnBeforePublish event and it failed in the first instance, the process would then move on to the next OnBeforePublish event.
 - **Cancel Impending Events** - in the event of an unhandled error, the process cancels all impending occurrences of the event. For example, if you had three plug-ins that contained the OnBeforePublish event and it failed in the first instance, all subsequent OnBeforePublish events are canceled.

To apply the Recovery property to a Plug-in or Event, follow these steps.

1. Open the Ektron Extensibility Configuration Editor by clicking **Start > Programs > CMS400 > Utilities > Plug-in Configuration**.
2. Click the plug-in or event in the menu tree.
3. Under the Recovery property, select the **Halt Current CMS Operation** or **Continue Current CMS Operation** radio button.
4. If you select Continue Current CMS Operation, select **Continue On to the Next Event** or **Cancel Impending Events** radio button. Otherwise, continue to the next step.
5. Click **Apply**.
6. Click the Save () button.

Setting the Information Properties in the Plug-in Code

You can add Author, Organization and Description information to your plug-in code. This helps you identify who wrote the plug-in and what it does. This information can be assigned at the assembly level (the plug-in) or the method level (the event). The method level attributes override the attributes assigned at the assembly level.



You assign assembly level attributes in the AssemblyInfo.cs or AssemblyInfo.vb depending on the language you are using. Method level attributes are assigned in the plug-in code above the method. The example below is at the method level using C#:

```
[ExtensionAuthor("John Smith")]
[ExtensionDescription("Appends text to the html")]
public override bool OnBeforePublish()
```

The following table shows more syntax examples for C# and VB.

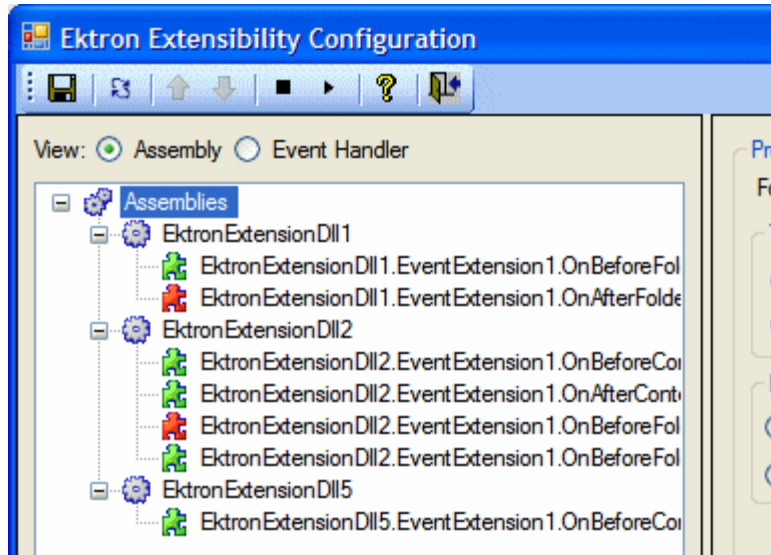
Example Type	Language	Example
Method Level	C#	<pre>[ExtensionAuthor("John Smith")] [ExtensionDescription("Appends text to the html")] public override bool OnBeforePublish()</pre>
Assembly Level	C#	<pre>[assembly: AssemblyDescription("Assembly Level Description")] [assembly: Ektron.Cms.Extensibility.ExtensionAuthor("John Smith")] [assembly: AssemblyCompany("Ektron Company Extension")]</pre>
Method Level	VB	<pre><ExtensionAuthor("John Smith")> _ <ExtensionDescription("Before Content Add Description")> _ Public Overrides Function OnBeforeContentAdd() As Boolean</pre> <hr/> <p>Note: The continue character "_" must be used at the end of each description line.</p> <hr/>
Assembly Level	VB	<pre><Assembly: AssemblyDescription("Assembly Level Description")> <Assembly: Ektron.Cms.Extensibility.ExtensionAuthor("John Smith")> <Assembly: AssemblyCompany("Ektron Company Extension")></pre>

Enabling and Disabling Plug-ins and Events

Plug-ins and events are enabled and disabled using the Enable Events () and Disable Events () buttons. You can enable or disable single events by clicking on the event and then clicking the Enable or Disable button.

If you want to enable or disable all the events in a plug-in, click on the plug-in while in the Assemblies view. Next, click the **Enable** or **Disable** button. To enable or disable all of the events of the same type, click on the event while in the Event Handler view. Next, click the **Enable** or **Disable** button.

When events are enabled, their puzzle icon is green. If they are disabled, their puzzle icon is red. Plug-ins and events are enabled by default.



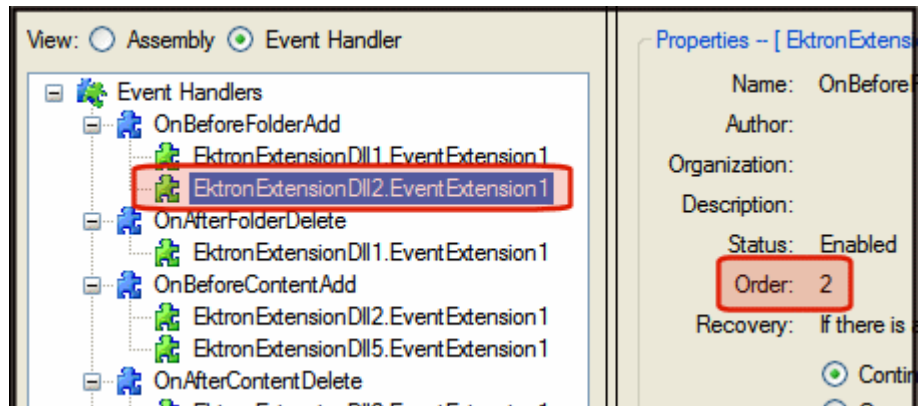
Setting the Plug-in Order of Execution by Event

Setting the plug-in execution order allows you to control when events of the same type are executed. For example, if you have three OnBeforePublish events in three separate plug-ins, you can decide which OnBeforePublish event happens first, second and third.

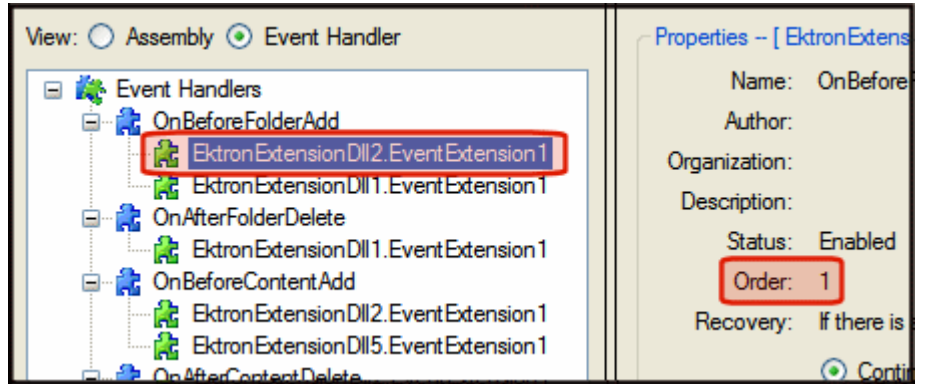
The order of events can only be set in Event Handler view. This way you see the plug-ins sorted by event. To change the plug-in execution order, click a plug-in and use the Event Up (↑) or Event Down (↓) button to reorder plug-ins.

In the before and after example below, the EktronExtensionDll2.EventExtension1 has been move to order position 1 (one) for the OnBeforeFolderAdd event.

Before:



After:



Additional Information

Supporting Documents

You can find more detailed information about Ektron CMS400.NET in the following manuals:

- Ektron CMS400.NET Developer Manual
- Ektron CMS400.NET Administrator Manual
- Ektron CMS400.NET User Manual
- Ektron CMS400.NET Quick Start Manual
- Ektron CMS400.NET Setup Manual

Support

If you are experiencing trouble with any aspect of Ektron CMS400.NET, please contact the Ektron Support Team via our Web Site at

http://www.ektron.com/support/cms400_support.aspx

Sales

For questions and answers about purchasing Ektron CMS400.NET from Ektron, contact the sales department by sending an e-mail to:

sales@ektron.com

Information

For general information about Ektron and its products, you may send an e-mail to:

info@ektron.com