



Ektron

ebusiness the way it should be

Ektron
CTMS
Web Service
For Hosting Companies

Installation Manual

Version 1.0

Ektron Inc.
5 Northern Blvd. Suite 6
Amherst, NH 03031 USA
Tel: +1 603.594.0249
Fax: +1 603.594.0258
<http://www.ektron.com>

Copyright 2002 Ektron, Inc. All rights reserved.

Version 1.0, February, 2002

EKTRON, INC. SOFTWARE LICENSE AGREEMENT

**** READ THIS BEFORE LOADING SOFTWARE****

YOUR RIGHT TO USE THE PRODUCT ENCLOSED IN THIS ENVELOPE OR OTHERWISE DELIVERED IS SUBJECT TO THE TERMS AND CONDITIONS SET OUT IN THIS LICENSE AGREEMENT. OPENING THIS ENVELOPE OR USING THIS PRODUCT SIGNIFIES YOUR AGREEMENT TO THESE TERMS. IF YOU DO NOT AGREE TO THIS SOFTWARE LICENSE AGREEMENT, YOU MAY RETURN THE PACKAGE WITH THE UNOPENED ENVELOPE OR AS IT WAS DELIVERED AND THE UNDAMAGED SOFTWARE ENCLOSED, ALONG WITH THE RECEIPT, TO YOUR SUPPLIER OR TO EKTRON, INC. WITHIN THIRTY DAYS FROM THE DATE OF PURCHASE FOR A FULL REFUND.

CUSTOMER should carefully read the following terms and conditions before using the software program(s) contained herein (the Software). Opening this sealed envelope, and/or using the Software or copying the Software onto CUSTOMER'S computer hard drive indicates CUSTOMER'S acceptance of these terms and conditions. If CUSTOMER does not agree with the terms of this agreement, CUSTOMER should promptly return the unused and unopened Software for a full refund.

Ektron, Inc. (Ektron) grants, and the CUSTOMER accepts, a nontransferable and nonexclusive License to use the Software on the following terms and conditions:

1. Right to use: The Software is licensed for use only in delivered code form. Each copy of the Software is licensed for use only on a single URL. Each license is valid for the number of seats listed below (the Basic Package). Any use of the Software beyond the number of authorized seats contained in the Basic Package without paying additional license fees as provided herein shall cause this license to terminate. This is not a concurrent use license. Should CUSTOMER wish to add seats beyond the seats licensed in the Basic Package, the CUSTOMER may add seats on a block basis at the then current price for additional seats (see product pages for current price). The Basic Packages are as follows:

eWebEditPro - Licensed for ten (10) seats per URL.

For purposes of this section, the term seat shall mean an individual user provided access to the capabilities of the Software.

2. Duration: This License shall continue so long as CUSTOMER uses the Software in compliance with this License. Should CUSTOMER breach any of its obligations hereunder, CUSTOMER agrees to return all copies of the Software and this License upon notification and demand by Ektron.

3. Copyright: The Software (including any images, applets, photographs, animations, video, audio, music and text incorporated into the Software) as well as any accompanying written materials (the Documentation) is owned by Ektron or its suppliers, is protected by United States copyright laws and international treaties, and contains confidential information and trade secrets. CUSTOMER agrees to protect the confidentiality of the Software and Documentation. CUSTOMER agrees that it will not provide a copy of this Software or Documentation nor divulge any proprietary information of Ektron to any person, other than its employees, without the prior consent of Ektron; CUSTOMER shall use its best efforts to see that any user of the Software licensed hereunder complies with this license.

4. Limited Warranty: Ektron warrants solely that the medium upon which the Software is delivered will be free from defects in material and workmanship under normal, proper and intended usage for a period of three (3) months from the date of receipt. Ektron does not warrant the use of the Software will be uninterrupted or error free, nor that program errors will be corrected. This limited warranty shall not apply to any error or failure resulting from (i) machine error, (ii) Customer's failure to follow operating instructions, (iii) negligence or accident, or (iv) modifications to the Software by any person or entity other than Company. In the event of a breach of warranty, Customer's sole and exclusive remedy, is repair of all or any portion of the Software. If such remedy fails of its essential purpose, Customer's sole remedy and Ektron's maximum liability shall be or refund of the paid purchase price for the defective Products only. This limited warranty is only valid if Ektron receives written notice of breach of warranty within thirty days after the warranty period expires. In the event of a breach of warranty, Ektron's sole responsibility, and CUSTOMER'S sole and exclusive remedy, is correction of any defect or bug causing the breach of warrant (either by repair or replacement of the Software). In the event this remedy fails of its essential purpose, CUSTOMER'S sole and exclusive remedy shall be refund of the Purchase Price of the defective Software only. This limited warranty is only valid if Ektron receives written notice of breach of warranty within thirty days following the warranty period.

5. Limitation of Warranties and Liability: THE SOFTWARE AND DOCUMENTATION ARE SOLD AS IS AND WITHOUT ANY WARRANTIES AS TO THE PERFORMANCE, MERCHANTABILITY, DESIGN, OR OPERATION OF THE SOFTWARE. BECAUSE OF THE DIVERSITY OF CONDITIONS UNDER WHICH THIS PRODUCT MAY BE USED, NO WARRANTY OF FITNESS FOR A PARTICULAR PURPOSE IS OFFERED. EXCEPT AS DESCRIBED IN SECTION 4, ALL WARRANTIES EXPRESS AND IMPLIED ARE HEREBY DISCLAIMED.

THE REMEDY DESCRIBED IN SECTION 12 SHALL BE CUSTOMER'S SOLE REMEDY FOR ANY PERFORMANCE FAILURE OF THE PRODUCTS. NEITHER COMPANY NOR ITS SUPPLIERS SHALL BE LIABLE FOR ANY LOSS OF PROFITS, LOSS OF BUSINESS OR GOODWILL, LOSS OF DATA OR USE OF DATA, INTERRUPTION OF BUSINESS NOR FOR ANY OTHER INDIRECT, SPECIAL, INCIDENTAL, OR CONSEQUENTIAL DAMAGES OF ANY KIND UNDER OR ARISING OUT OF, OR IN ANY RELATED TO THIS AGREEMENT, HOWEVER CAUSED, WHETHER FOR BREACH OF WARRANTY, BREACH OR REPUDIATION OF CONTRACT, TORT, NEGLIGENCE, OR OTHERWISE, EVEN IF COMPANY OR ITS REPRESENTATIVES HAVE BEEN ADVISED OF THE POSSIBILITY OF SUCH LOSS.

6. Miscellaneous: This License Agreement, the License granted hereunder, and the Software may not be assigned or in any way transferred without the prior written consent of Ektron. This Agreement and its performance and all claims arising from the relationship between the parties contemplated herein shall be governed by, construed and enforced in accordance with the laws of the State of New Hampshire without regard to conflict of laws principles thereof. The parties agree that any action brought in connection with this Agreement shall be maintained only in a court of competent subject matter jurisdiction located in the State of New Hampshire or in any court to which appeal therefrom may be taken. The parties hereby consent to the exclusive personal jurisdiction of such courts in the State of New Hampshire for all such purposes. The United Nations Convention on Contracts for the International Sale of Goods is specifically excluded from governing this License. If any provision of this

License is to be held unenforceable, such holding will not affect the validity of the other provisions hereof. Failure of a party to enforce any provision of this Agreement shall not constitute or be construed as a waiver of such provision or of the right to enforce such provision. If you fail to comply with any term of this License, YOUR LICENSE IS AUTOMATICALLY TERMINATED. This License represents the entire understanding between the parties with respect to its subject matter.

Esker Active X Plug-in

Active X controls under Netscape

Use License

IMPORTANT: READ CAREFULLY -

Use of the Esker Active X Plug-in is subject to the terms and conditions below. BY INSTALLING, COPYING OR OTHERWISE USING THE PLUG-IN, YOU AGREE TO BE BOUND BY THE TERMS AND CONDITIONS BELOW. IF YOU DO NOT AGREE TO THESE TERMS AND CONDITIONS, DO NOT INSTALL, COPY OR USE THE PLUG-IN.

The Plug-in is provided to you as an end-user "as is" without technical support. No rights are granted to you in this license for commercial use or redistribution of any kind. Should you desire to redistribute the Plug-in or include it with other software packages please e-mail Esker at axplug-in@esker.com to find out how you may do so.

DISCLAIMER OF WARRANTIES. TO THE MAXIMUM EXTENT PERMITTED BY APPLICABLE LAW, ESKER AND ITS SUPPLIERS PROVIDE TO YOU THE PLUG-IN AS IS AND WITH ALL FAULTS; AND ESKER AND ITS SUPPLIERS HEREBY DISCLAIM WITH RESPECT TO THE PLUG-IN ALL WARRANTIES AND CONDITIONS, WHETHER EXPRESS, IMPLIED OR STATUTORY, INCLUDING, BUT NOT LIMITED TO, ANY (IF ANY) WARRANTIES OR CONDITIONS OF OR RELATED TO: TITLE, NON-INFRINGEMENT, MERCHANTABILITY, FITNESS FOR A PARTICULAR PURPOSE, LACK OF VIRUSES, ACCURACY OR COMPLETENESS OF RESPONSES, RESULTS, LACK OF NEGLIGENCE OR LACK OF WORKMANLIKE EFFORT, QUIET ENJOYMENT, QUIET POSSESSION, AND CORRESPONDENCE TO DESCRIPTION. THE ENTIRE RISK ARISING OUT OF USE OR PERFORMANCE OF THE PLUG-IN REMAINS WITH YOU.

EXCLUSION OF INCIDENTAL, CONSEQUENTIAL AND CERTAIN OTHER DAMAGES. TO THE MAXIMUM EXTENT PERMITTED BY APPLICABLE LAW, IN NO EVENT SHALL ESKER OR ITS SUPPLIERS BE LIABLE FOR ANY SPECIAL, INCIDENTAL, INDIRECT, OR CONSEQUENTIAL DAMAGES WHATSOEVER INCLUDING, BUT NOT LIMITED TO, DAMAGES FOR: LOSS OF PROFITS, LOSS OF CONFIDENTIAL OR OTHER INFORMATION, BUSINESS INTERRUPTION, PERSONAL INJURY, LOSS OF PRIVACY, FAILURE TO MEET ANY DUTY (INCLUDING OF GOOD FAITH OR OF REASONABLE CARE), NEGLIGENCE, AND ANY OTHER PECUNIARY OR OTHER LOSS WHATSOEVER ARISING OUT OF OR IN ANY WAY RELATED TO THE USE OF OR INABILITY TO USE THE PLUG-IN, OR FAILURE TO PROVIDE TECHNICAL SUPPORT, OR OTHERWISE UNDER OR IN CONNECTION WITH ANY PROVISION OF THIS LICENSE, EVEN IF ESKER OR ANY SUPPLIER HAS BEEN ADVISED OF THE POSSIBILITY OF SUCH DAMAGES.

Due to the complex nature of computer software Esker does not warrant that the Plug-in is completely error-free, will operate without interruption or is compatible with all equipment and software configurations. You are advised to check all work performed with the Plug-in. Do not use the Plug-in in any case where significant damage or injury to persons, property or business may happen if an error occurs. You expressly assume all risks for such use.

(c) 2000 Esker, Inc. All rights reserved.

Copyright to and in the Plug-in remains the property of Esker, Inc. and as such, any copyright notices in the Plug-in are not to be removed.

YOU ACKNOWLEDGE THAT YOU HAVE READ THIS AGREEMENT, THAT YOU UNDERSTAND THIS AGREEMENT, AND UNDERSTAND THAT BY CONTINUING THE INSTALLATION OF THE SOFTWARE, BY LOADING OR RUNNING THE SOFTWARE, OR BY PLACING OR COPYING THE SOFTWARE ONTO YOUR COMPUTER HARD DRIVE, YOU AGREE TO BE BOUND BY THIS AGREEMENT'S TERMS AND CONDITIONS. YOU FURTHER AGREE THAT, EXCEPT FOR WRITTEN SEPARATE AGREEMENTS BETWEEN EKTRON AND YOU, THIS AGREEMENT IS A COMPLETE AND EXCLUSIVE STATEMENT OF THE RIGHTS AND LIABILITIES OF THE PARTIES.

(c) 1999-2000 Ektron, Inc. All rights reserved. LA10031, Revision 1.5

Table Of Contents

Table Of Contents	v
What's In This Manual?	1
Before You Install	2
System Requirements	2
Preparing for Installation	2
Installing Microsoft Data Access Component (MDAC) Drivers	3
Installing CMS Web Services	4
Running CMS Web Services Setup	4
Inserting Your License	18
What's Next?	22
Setting Up an MS-SQL Database	23
Creating An Empty SQL Database	23
Running the SQL Script	25
Creating New DSN	29
Moving the Data	33
Using wsmover.asp to Move Data.....	34
Using dbmover.exe to Move Data.....	35
Configuring Setup.asp	39
DSN-less Connection	40
Before You Begin	40
Creating a UDL File	40
Windows 98/ME/NT	40
Windows 2000.....	41
Configuring The UDL File	41
Using A UDL File	42
Using a Provider String	43
Converting UDL file to a Provider String	43
Configuring CMS Web Services to use the Provider String	44



What's In This Manual?

This manual, the Ektron CMS Web Service *Installation Manual, Version 1.0*, contains information about setting up Ektron CMS Web Service on your machine. This manual will cover the steps during the installation process, as well as information about setting up your database correctly.

Before You Install...

Before you install Ektron CMS Web Service, there are some things that you'll need to know. This chapter gives you a brief summary of the requirements for your system.

System Requirements

The following components are required when developing or viewing an Ektron CMS Web Service based application:

Browsers	When viewing and editing a Web site developed with Ektron CMS Web Service, you can use the following browsers: Viewing: <ul style="list-style-type: none">• All major browsers Editing: <ul style="list-style-type: none">• Internet Explorer 4.01 and higher• Netscape Navigator 4.7x and higher
Server Operating System	<ul style="list-style-type: none">• MS Windows 2000• MS Windows, NT(NT server MUST be running service pack 6).
Database	Microsoft Access or Microsoft SQL Server (recommended)
Hardware	Any IBM-PC compatible system (suggested minimum requirements: Pentium 166 MHz or faster with at least 64MB of RAM)
Web Server Applications	Microsoft Active Server Pages (ASP) 2.0 or Higher
Web Server	Microsoft Internet Information Server (IIS) 4.0 or higher with NT SP6

Preparing for Installation

Prior to installing Ektron CMS Web Service, you must first perform the following tasks:

-
1. Install Microsoft Data Access Component (MDAC) Drivers version 2.1 or greater.

NOTE You will not need to install MDAC 2.1 drivers if you have Windows 98 Second Edition or greater and/or you have any type of Microsoft Office application installed on your machine.

2. Install Internet Information Services (IIS 4.0 or higher).

Installing Microsoft Data Access Component (MDAC) Drivers

Install MDAC drivers version 2.1 or higher. We recommend the latest available from Microsoft.

To find out which drivers you have installed on your machine, you can download the Component Checker tool from Microsoft.

NOTE As of June 2000, all MDAC downloads are located at (www.microsoft.com/Data/download.htm).

Installing Ektron CMS Web Service

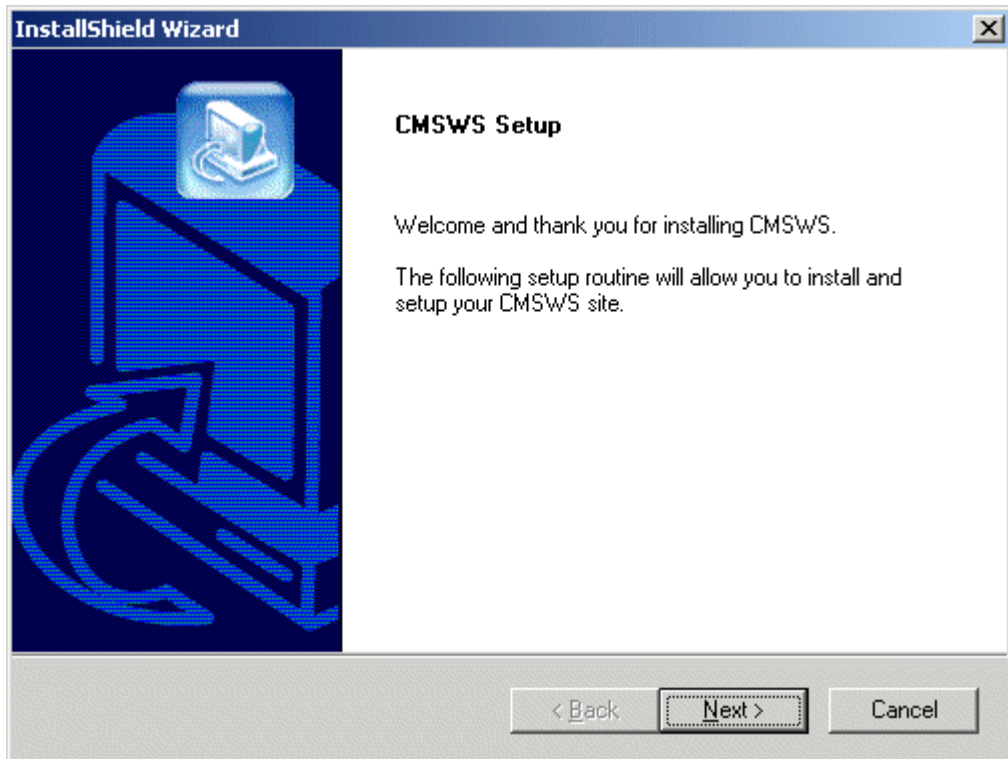
To run the Ektron CMS Web Service installation, begin by double-clicking on the executable file that you downloaded from the Ektron Web Site.



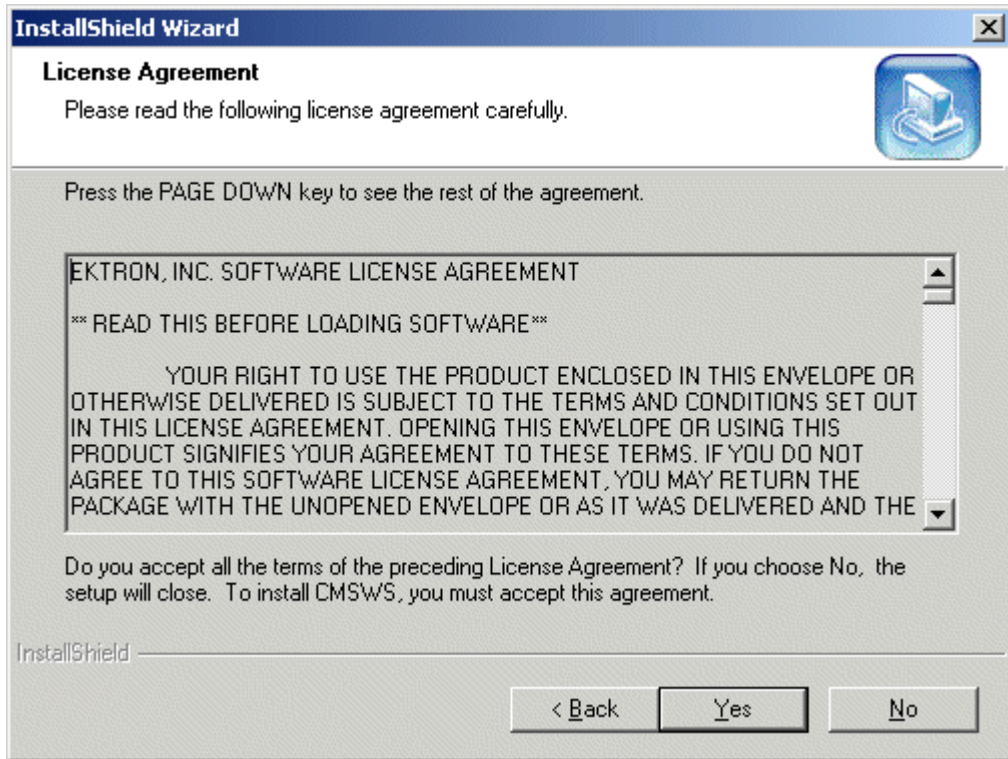
cmsws.exe

Running Ektron CMS Web Service Setup

1. After double-clicking the icon, you will come to the following setup start screen.



2. The next screen in the installation is the Ektron License Agreement. If you accept the terms, click **YES** to continue.



-
3. At the next screen, you will be prompted to enter your Company Name and the password that you received from Ektron. Click **Next >** when you are finished.

InstallShield Wizard

License

Please enter your company name and the CMSWS license key in the following fields.

Company:

License:

InstallShield

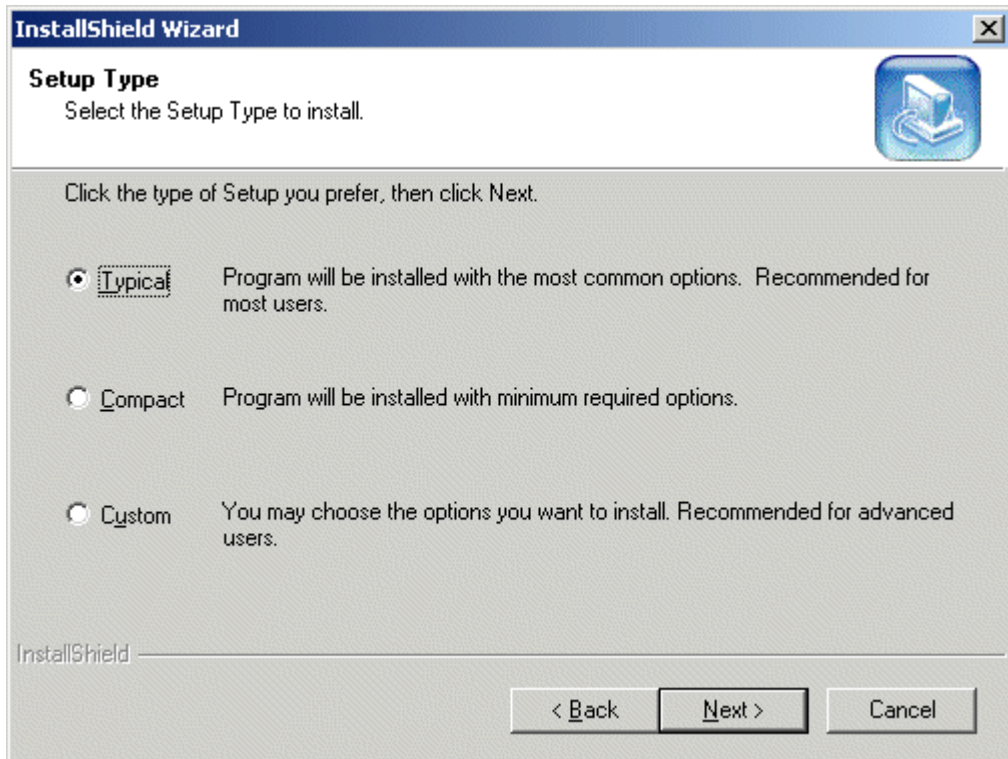
< Back Next > Cancel

NOTE You do not need to insert your license key now, see "Inserting Your License" on page 18 for more information.

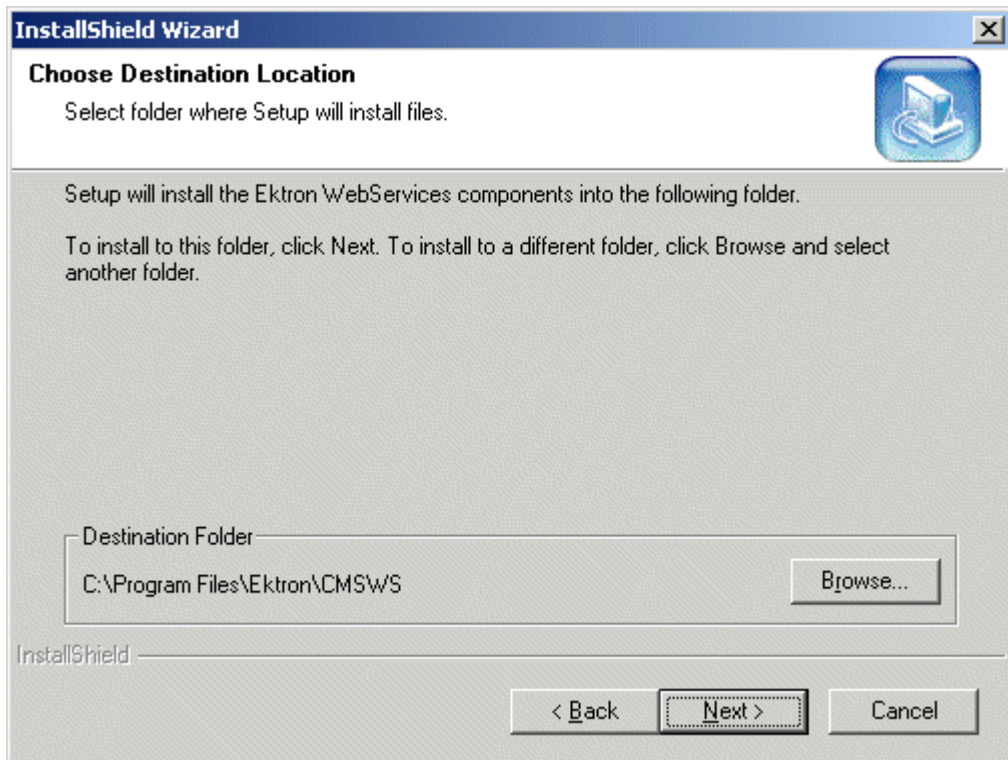
4. At the next screen, you can choose the type of installation that you wish to run
- **Typical** - Recommended Install. This will install everything including components, necessary files, a demo site which includes a database, and Ektron CMS Web Service documentation.
 - **Compact** - Installs the minimum amount of files to get your Ektron CMS Web Service up and running.

- **Custom** - Allows you to select which components of Ektron CMS Web Service you want to install.

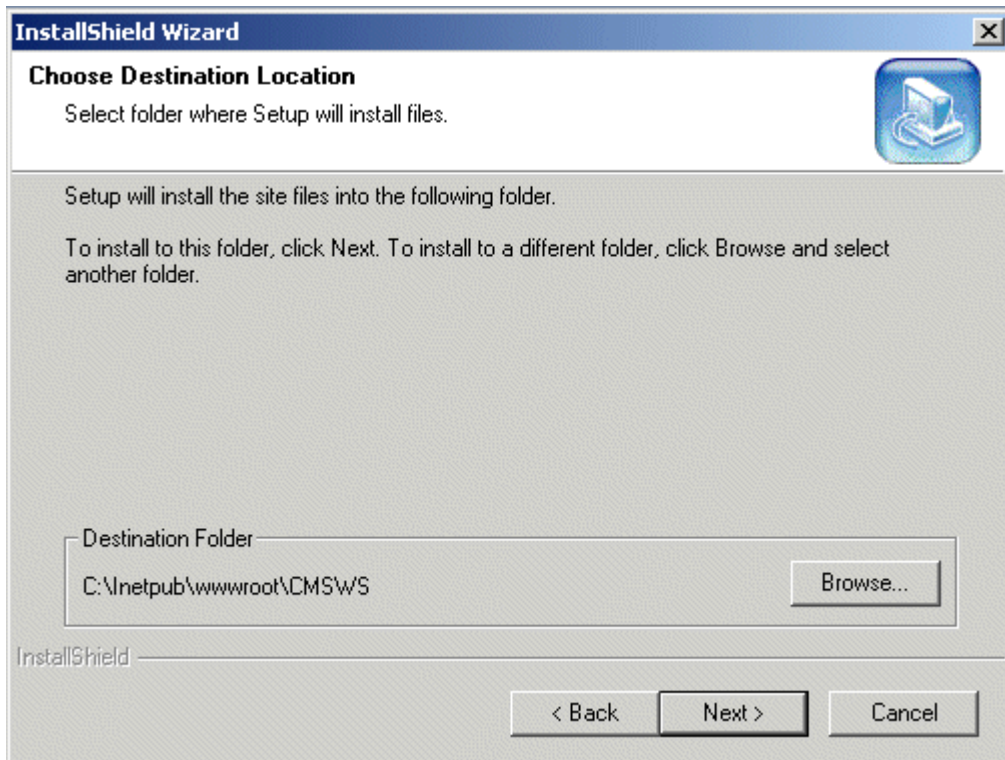
After selecting a specific setup type, click **Next >**.



-
5. The next screen will ask you where you would like to install the Ektron CMS Web Service components. Accept the default or select a different directory, then click **Next >**.



-
6. The next screen will ask you where you would like to install the rest of the Ektron CMS Web Service files to. Accept the default or select a different location then click **Next >**.



WARNING!

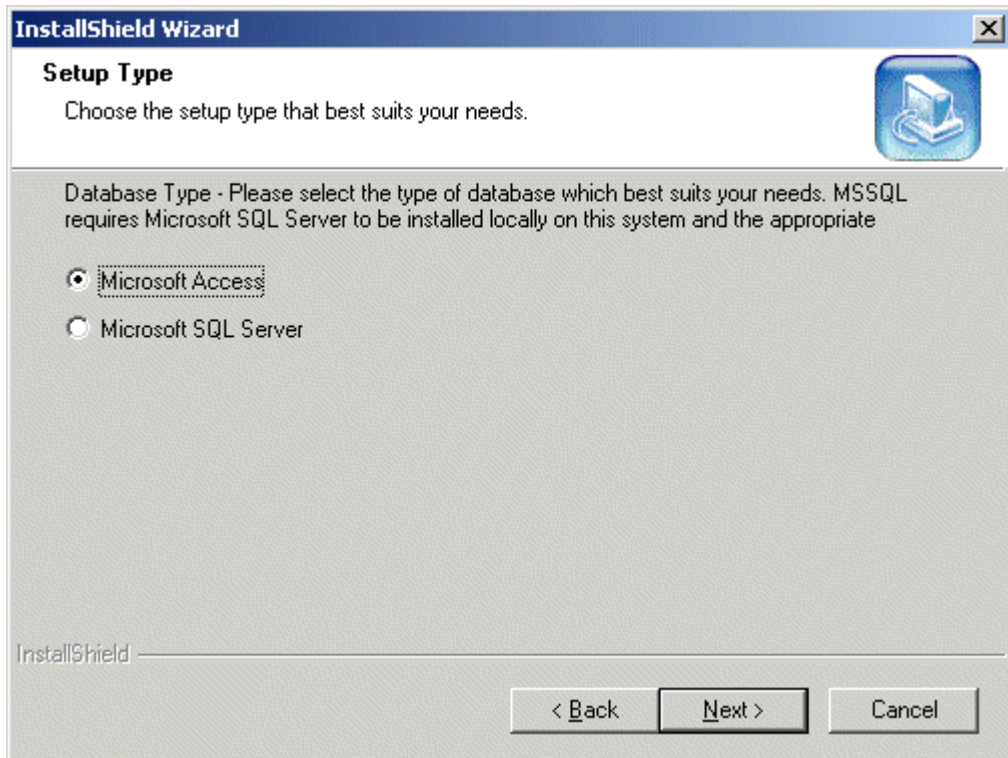
If you do not install Ektron CMS Web Service to a folder named \CMSWS, you will need to create a Virtual Directory called "CMSWS" and point it to the directory that Ektron CMS Web Service was installed to for the application to function properly.

7. At the next screen, you will have the ability to choose the type of database that you would like to use for Ektron CMS Web Service. The choices are:
- Microsoft Access
 - Microsoft SQL Server

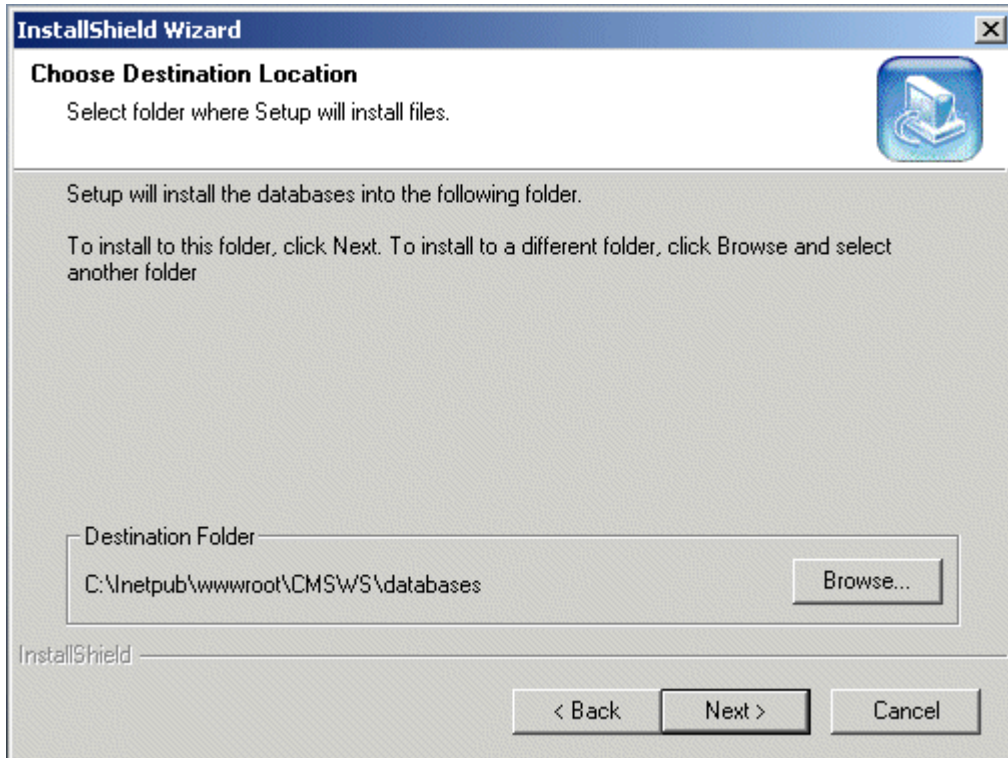
NOTE Ektron strongly recommends using MS-SQL as your database when using Ektron CMS Web Service due to better performance.

Once you have selected the type of database you would like to use, click the **Next >** button.

If you chose a Microsoft Access database, proceed to step 8A. For a Microsoft SQL Server Database, proceed to step 8B.

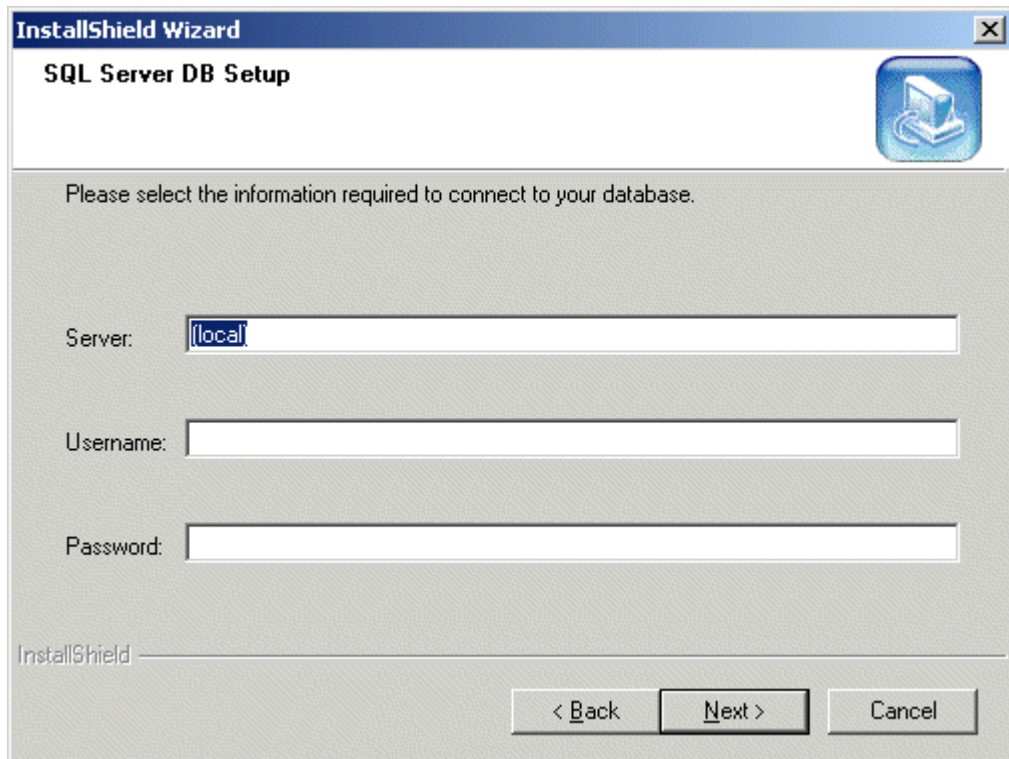


8A. If you have selected to install a Microsoft Access database, you will be asked where you would like to install the database to. Accept the default or specify a different location, then click the **Next >** button.



NOTE If you want to install using an Access database, then convert that database to a MS-SQL database in the future, see "Setting Up an MS-SQL Database" on page 23.

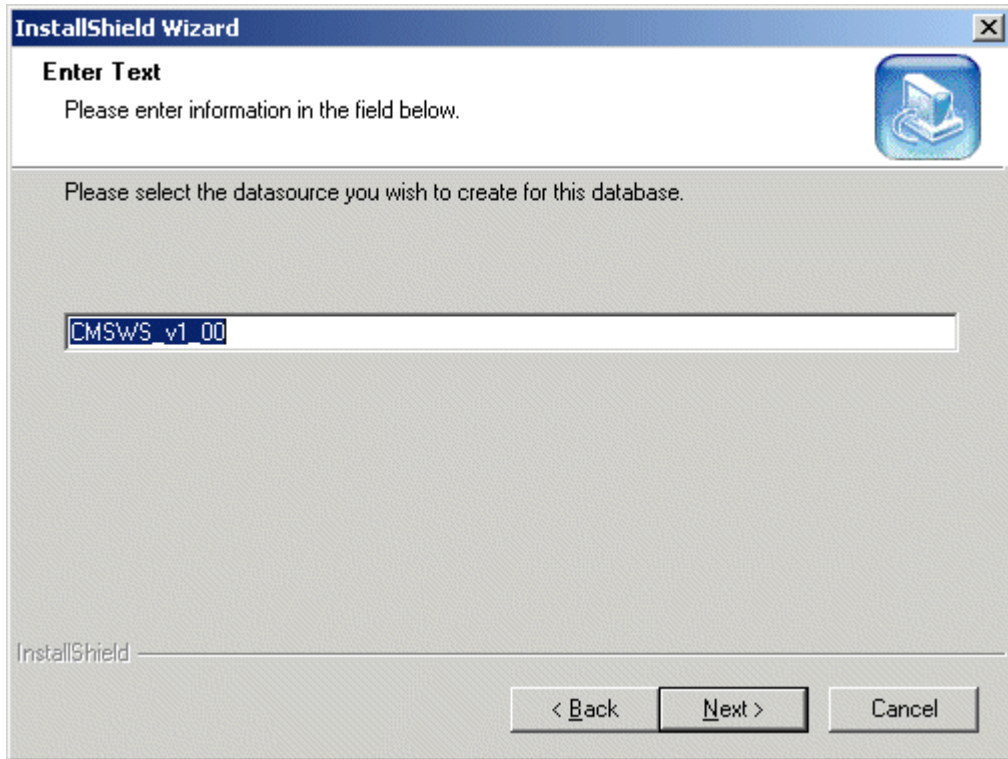
-
- 8B. If you have selected to install a Microsoft SQL Server database, you will need to enter information to connect to the database. At this screen, enter the name of the SQL Server, your Username, and your Password. Once completed, click **Next >** to continue.



The screenshot shows a Windows-style dialog box titled "InstallShield Wizard" with a sub-title "SQL Server DB Setup". The dialog contains the following elements:

- A close button (X) in the top right corner.
- A blue icon of a computer monitor with a refresh symbol in the top right corner.
- Text: "Please select the information required to connect to your database."
- Three input fields:
 - Server: A text box containing "[local]".
 - Username: An empty text box.
 - Password: An empty text box.
- At the bottom left, the text "InstallShield" is displayed.
- At the bottom right, three buttons: "< Back", "Next >", and "Cancel".

9. After you specify the location of the database, you will then be prompted to enter a DSN for it.



Either accept the default or enter a new name into the field, and click **Next >** to continue.

NOTE By default, the installation creates an ODBC Connection to the database. For information about configuring your Ektron CMS Web Service application to use an OLE DB connection, see "DSN-less Connection" on page 40.

-
10. Next, you will be prompted to enter the server host name that you will be using to access the Ektron CMS Web Service site. An example of this might be **http://www.yoursite.com/cmsws**. Either accept the default or enter your host name then click the **Next >** button to continue.

InstallShield Wizard

Enter Text

Please enter information in the field below.

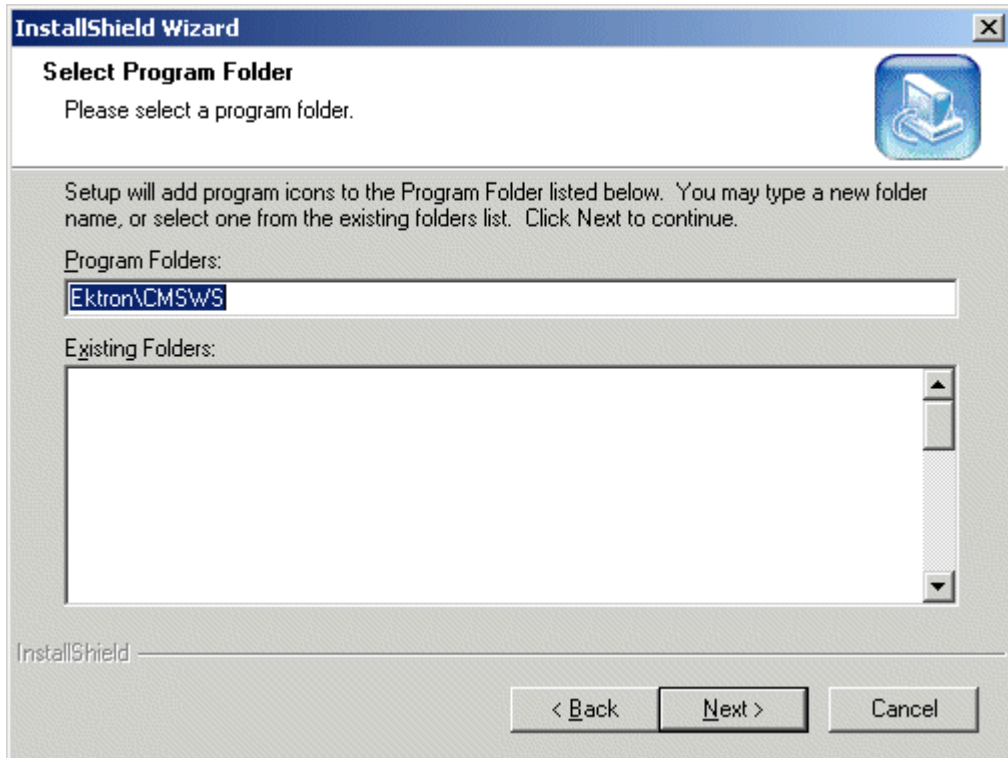
What is the server host name (including subfolder) you will be using to access this site?
If you are unsure, please use the default.

http://localhost/CMSWS

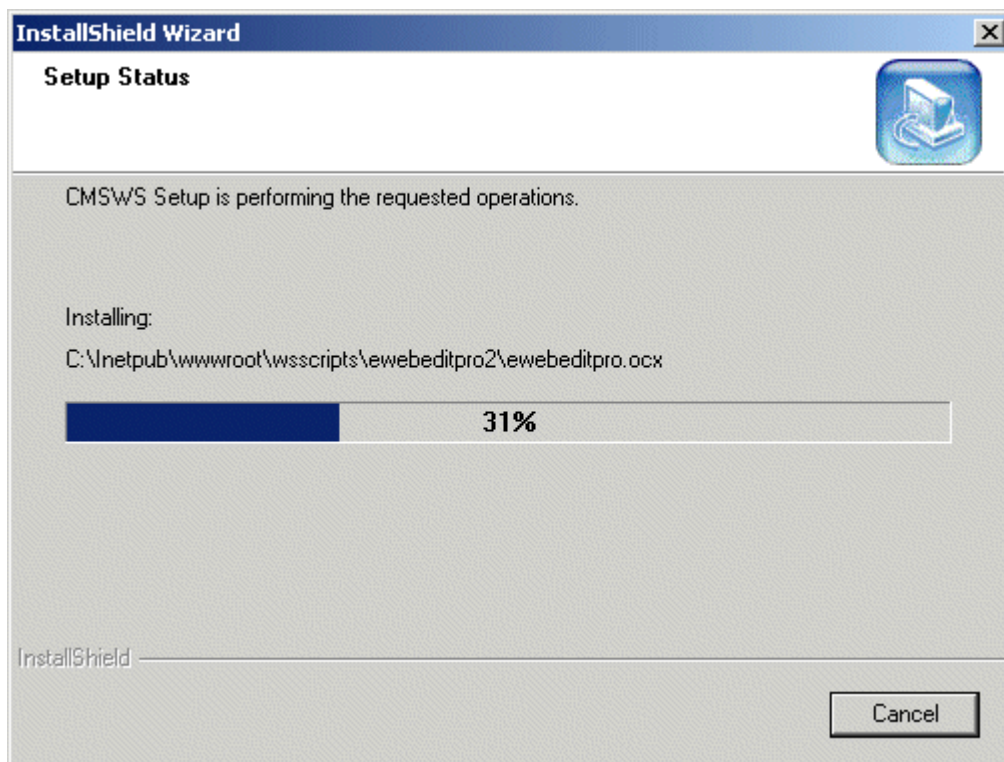
InstallShield

< Back Next > Cancel

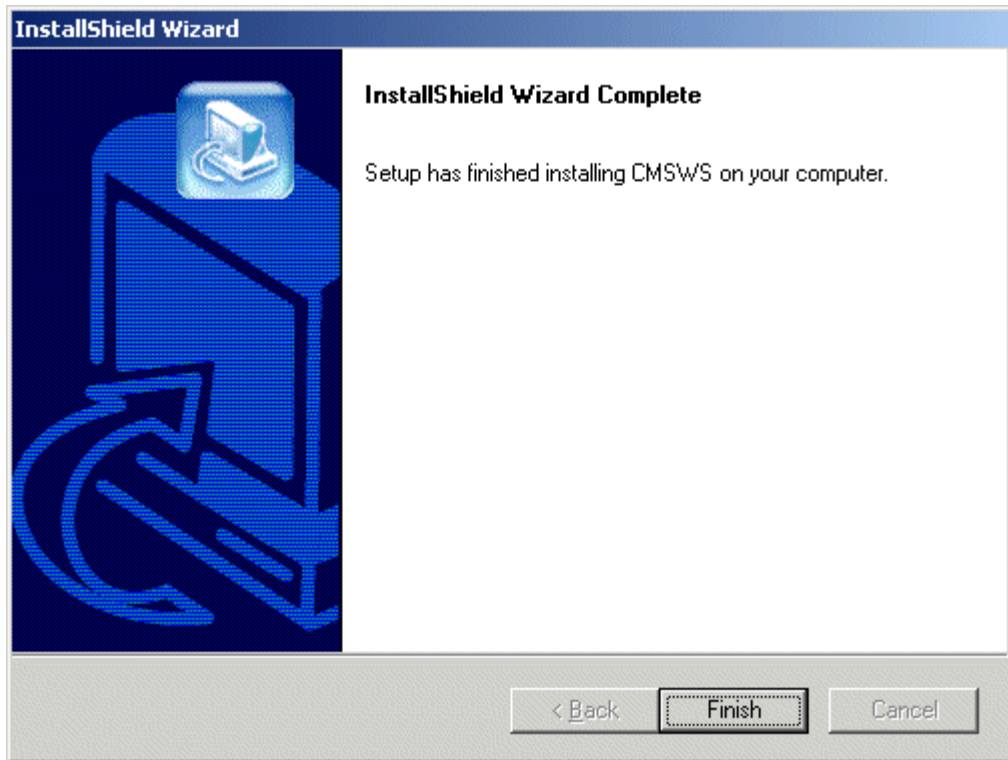
-
11. At the next screen, you will be asked where you would like to insert the program icons on the start menu. Either accept the default or specify a new location then click **Next >** to finish up the installation process.



12. This next screen gives you a status on the files that are being installed for Ektron CMS Web Service.



-
13. Once all the files have been successfully installed, you will see the following message. Click **Finish** to end the installation.

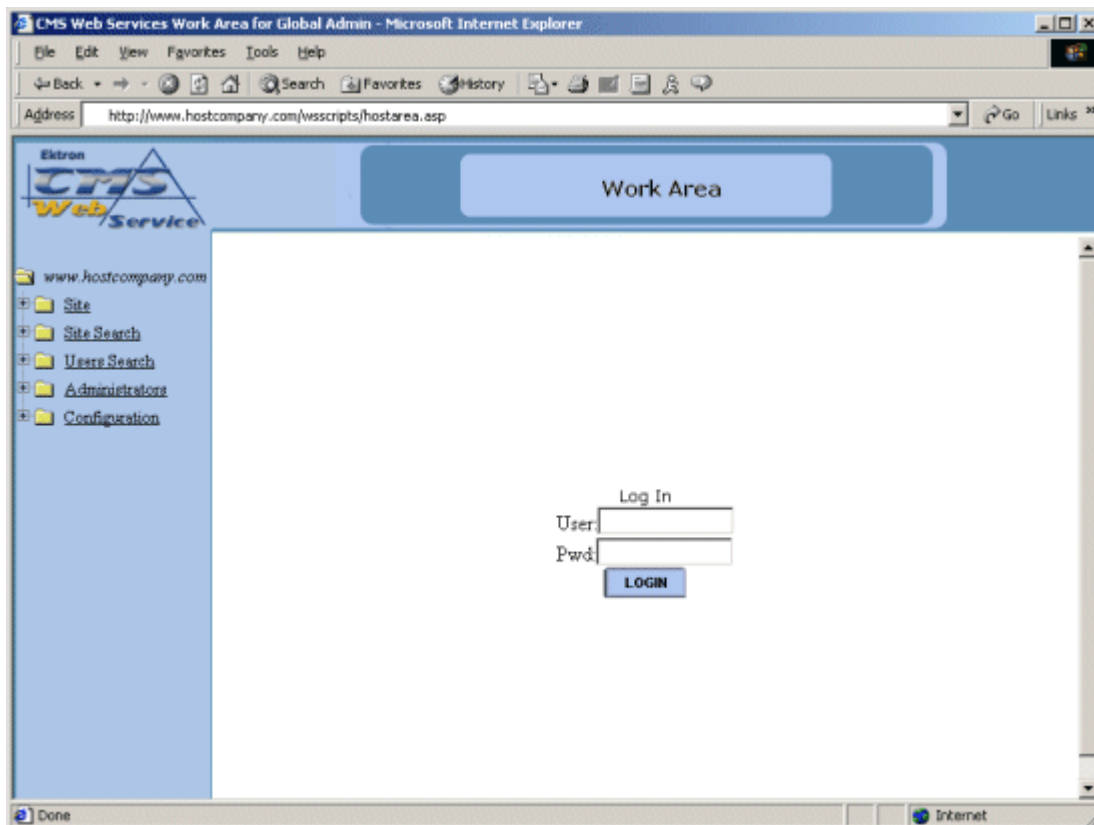


Inserting Your License

During the installation, you should have been prompted to enter the license key that was sent to you via email from Ektron. If you did not enter the license key during the setup, you can also insert the license key via the Global Administrator Workarea. To do this, follow these steps.

1. Log in to Ektron CMS Web Service by accessing the Global Administrator Workarea login page. This page can be accessed by following the path in the start menu:

Start > Programs > Ektron > CMSWS > CMSWS-Host Login

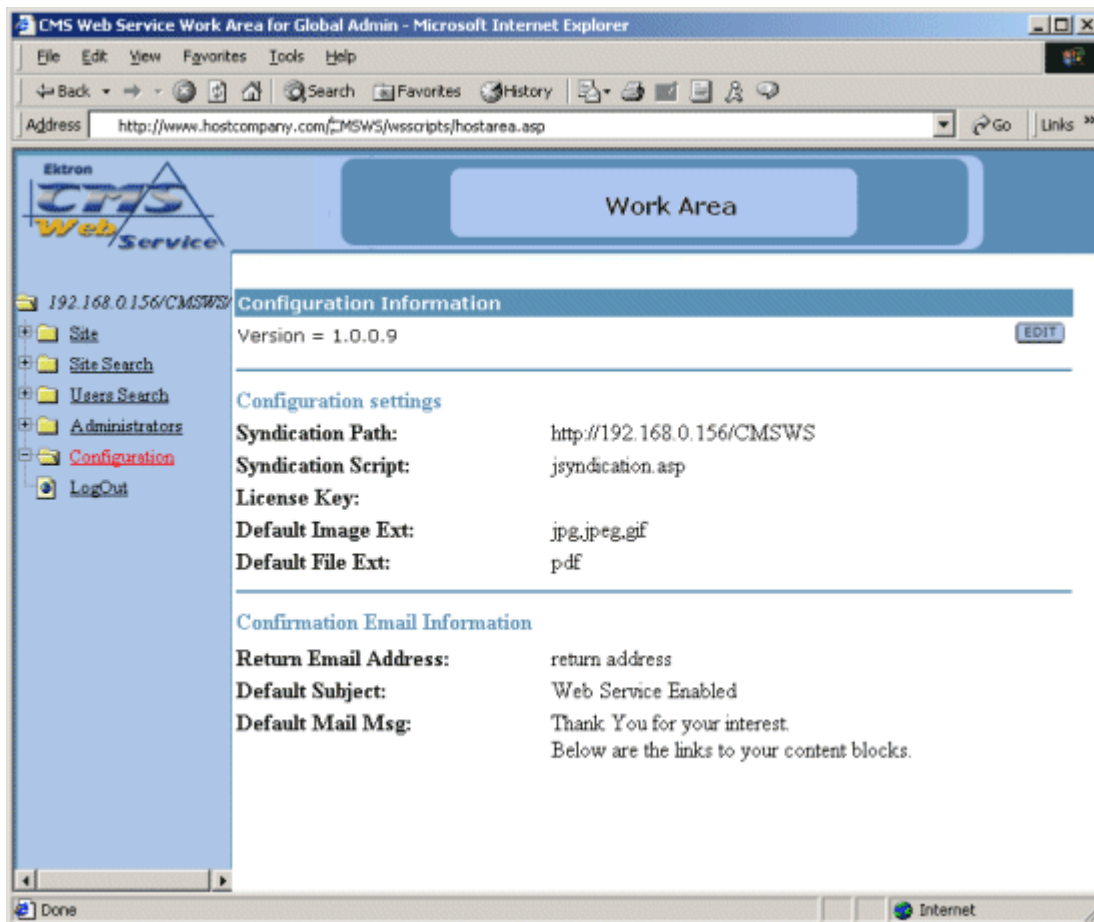


At this screen, enter the username/password combination of gadmin/gadmin to log into the Global Administrator Workarea as the default Global Administrator.

2. Once logged in, click on the Configuration folder in the folder tree on the left side of the screen.



3. After you have clicked on the configuration folder, you will see the following pager

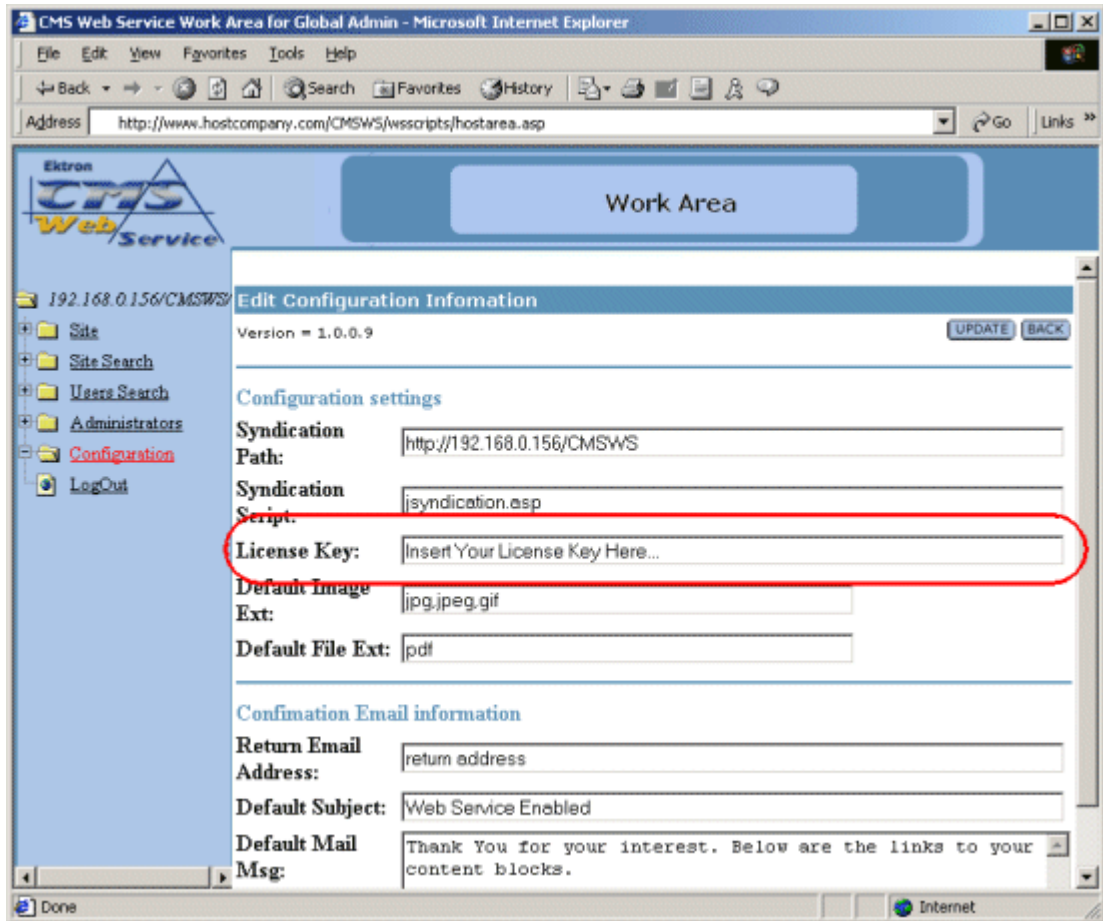


This is the page where you can edit many aspects of your Ektron CMS Web Service Web site.

4. To insert the license, begin by clicking on the **EDIT** button near the top of the page:

EDIT

5. Once you have clicked on the edit button, you will then see the edit configuration page where you will be able to insert your license



In the “License Key” field, paste the license key that was sent to you via email from Ektron.

6. Once you have inserted the license key, click **UPDATE** to save the changes.

UPDATE

What's Next?

Once you have successfully installed Ektron CMS Web Service, you are ready to host multiple Web sites easily and efficiently.

From here, move on to the Ektron CMS Web Service *Global Administrator Manual Version 1.0* for information about using Ektron CMS Web Service to host multiple Web sites.

Setting Up an MS-SQL Database

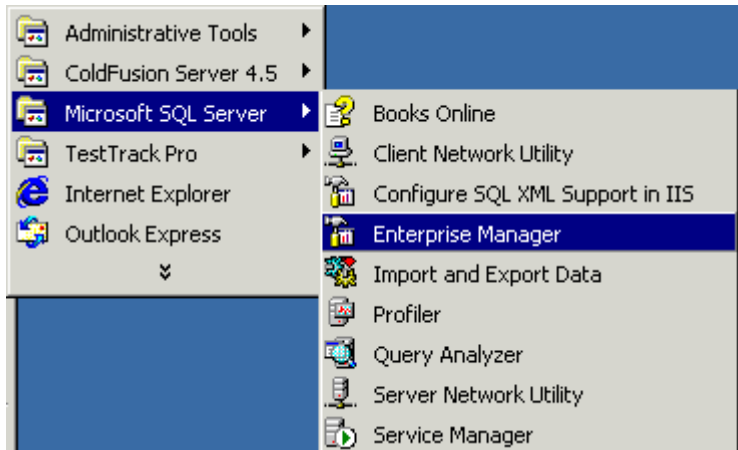
As mentioned before, Ektron CMS Web Service is compatible with a MS-SQL Database. All that is needed is to run the cmsws_mssql.sql scripts that are provided in the install and a few other basic tasks. All this is described below.

NOTE Ektron CMS Web Service functions the same with MS-SQL as it does with MS Access. For performance reasons, Ektron strongly recommends using **MS-SQL** as your database if able.

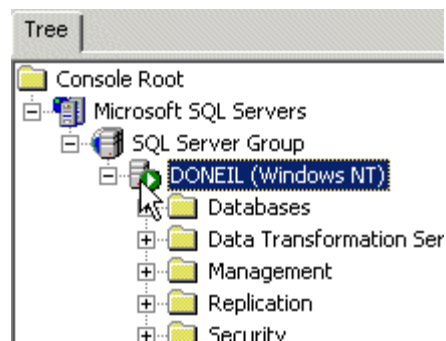
Creating An Empty SQL Database

First, you must create an MS SQL database. To do this, follow these steps:

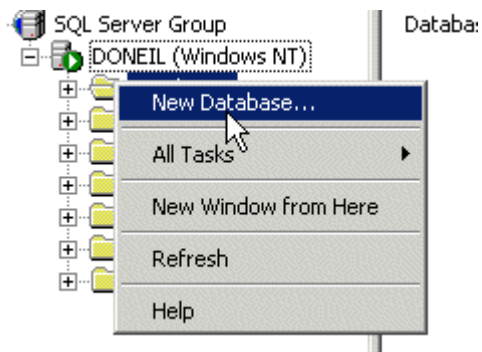
1. From the Windows start menu, open your MS-SQL Enterprise Manager.



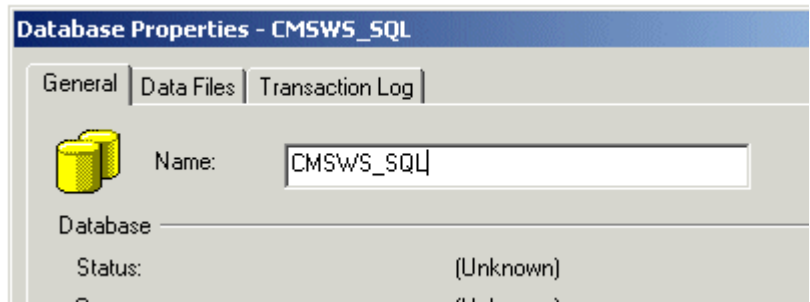
2. Select the server that you want to add the database to.



3. Right click on the database folder, and select "New Database..."



4. Enter a name for the database (e.g., CMSWS_SQL)



5. Click the **OK** button at the bottom of the window. The page will be refreshed and you will see the database you just added on the right side of the screen.



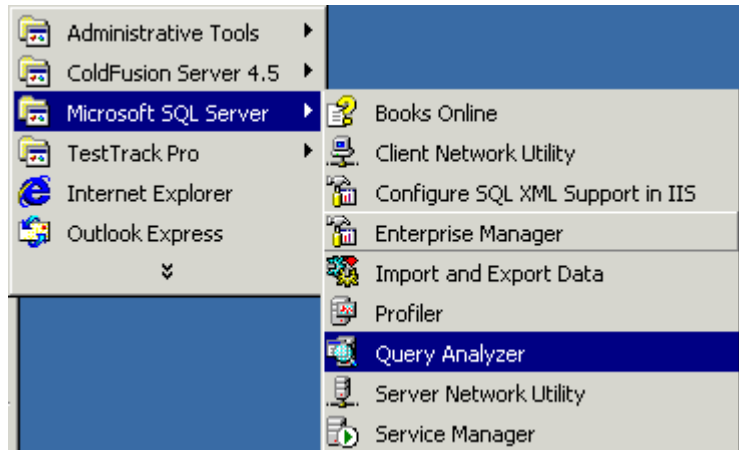
6. Close the Enterprise Manager.

Running the SQL Script

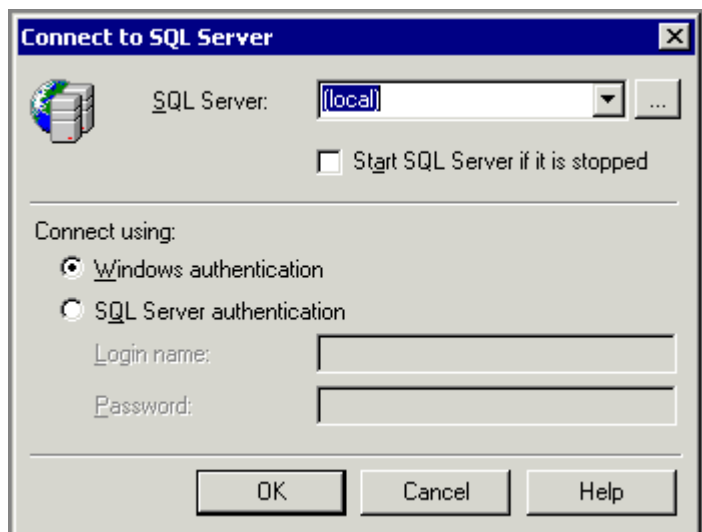
The .sql script that is provided with Ektron CMS Web Service will create all the necessary tables in the newly created MS-SQL database for Ektron CMS Web Service.

The script is in the c:\Program Files\Ektron\CMSWS\Utilities\ directory as **cmsws_mssql.sql**. To access it and run it properly, follow these steps:

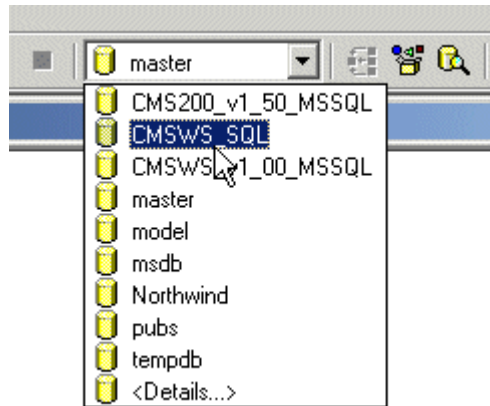
1. From Windows Start menu, open your MS-SQL Query Analyzer.



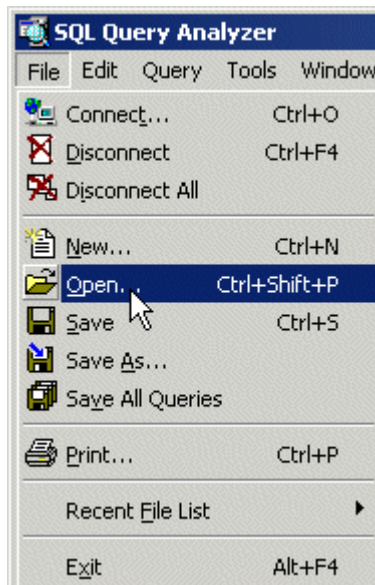
2. Select the server that you used to create the Ektron CMS Web Service database on, and enter the type of Authentication that you are using to connect to the SQL Server.



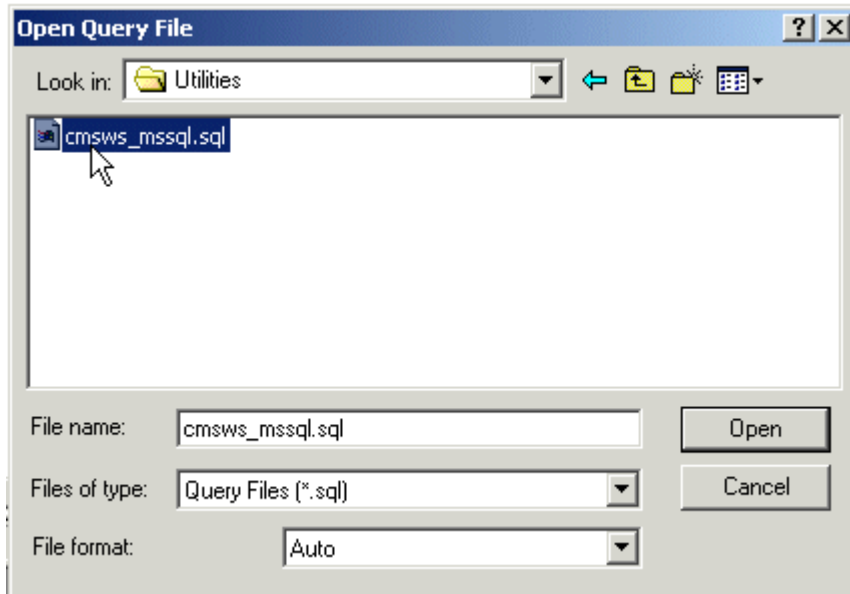
3. Select the new database that was created earlier (CMSWS_SQL) from the drop down list at the top of the screen.



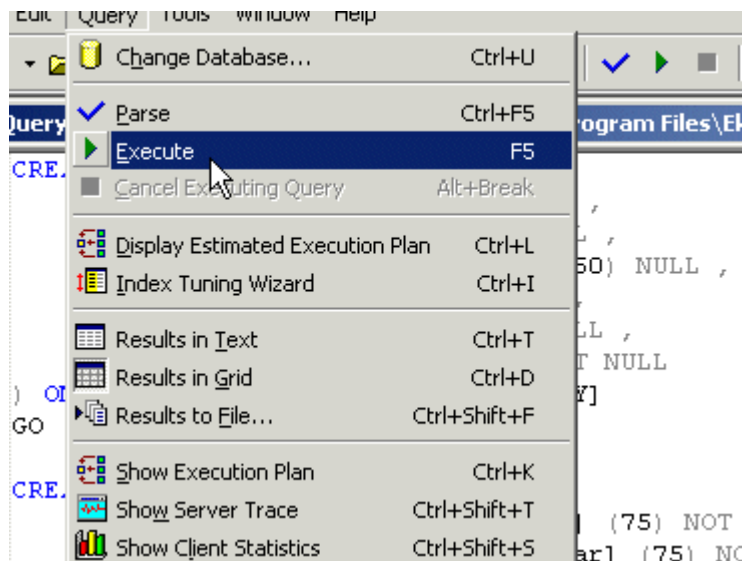
4. Load the sql script by selecting **Open File** either from the toolbar, of the File menu.



5. Browse for the file **cmsws_mssql.sql**. If you ran the default installation, you can find the script in the **\\ProgramFiles\\Ektron\\CMSWS\\Utilities** directory.



6. When you have located the .sql script, select it and click the **Open** button.
7. Select the green arrow on the toolbar, press <F5>, or select the execute command from the Query menu, to run/execute the script.



After the script executes, you will see a confirmation message that “the command(s) completed successfully.”

8. Finally, close the SQL Query Analyzer

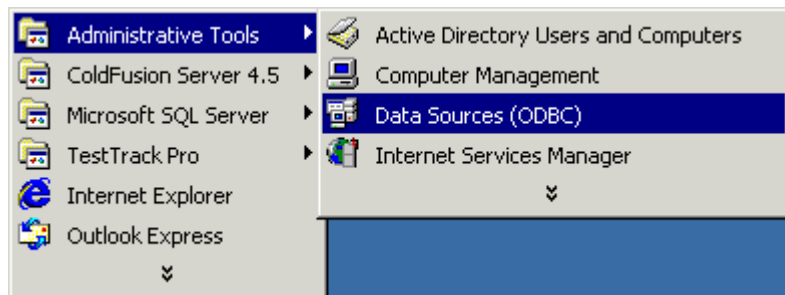
You now have a blank SQL database for Ektron CMS Web Service with all the proper tables. In the next step, we will need to create a new DSN for the SQL Server database.

Creating New DSN

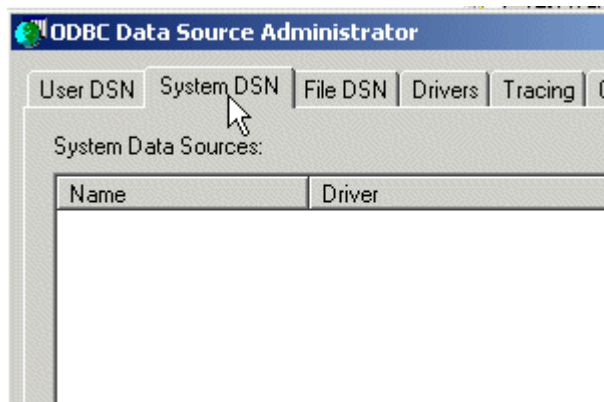
Because you will now be using a MS-SQL database, you need to create a new DSN that will point to this new database. This can easily be done by going into the ODBC Manager and pointing the DSN to the new MS-SQL database.

NOTE For information about creating a DSN-less connection to the MS-SQL database for CMS100, see "DSN-less Connection" on page 40.

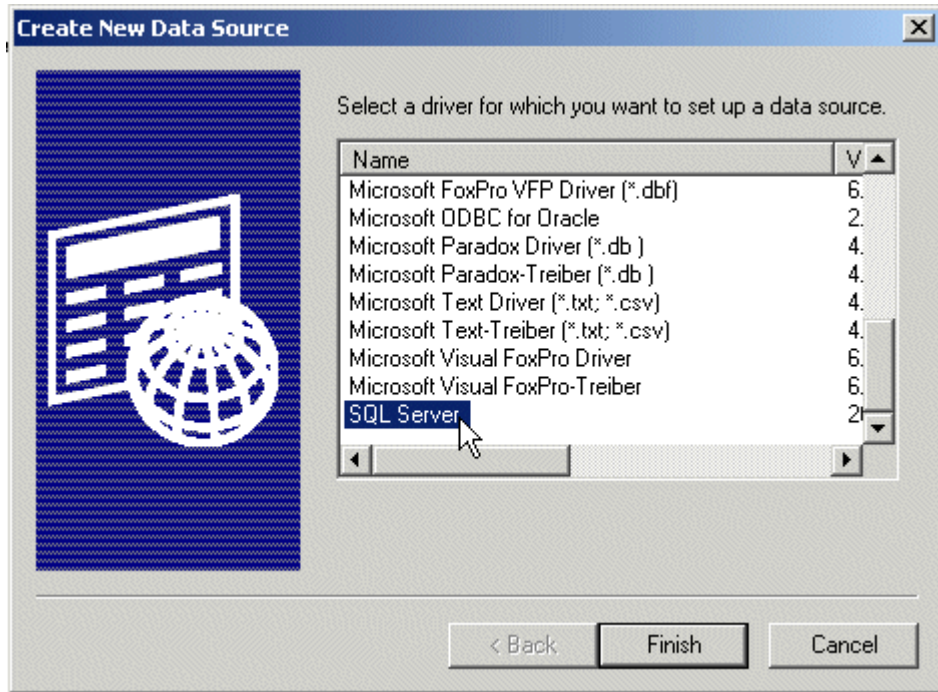
1. Enter the ODBC Manager from the Control Panel on your system.



2. Click on the **System DSN** tab.

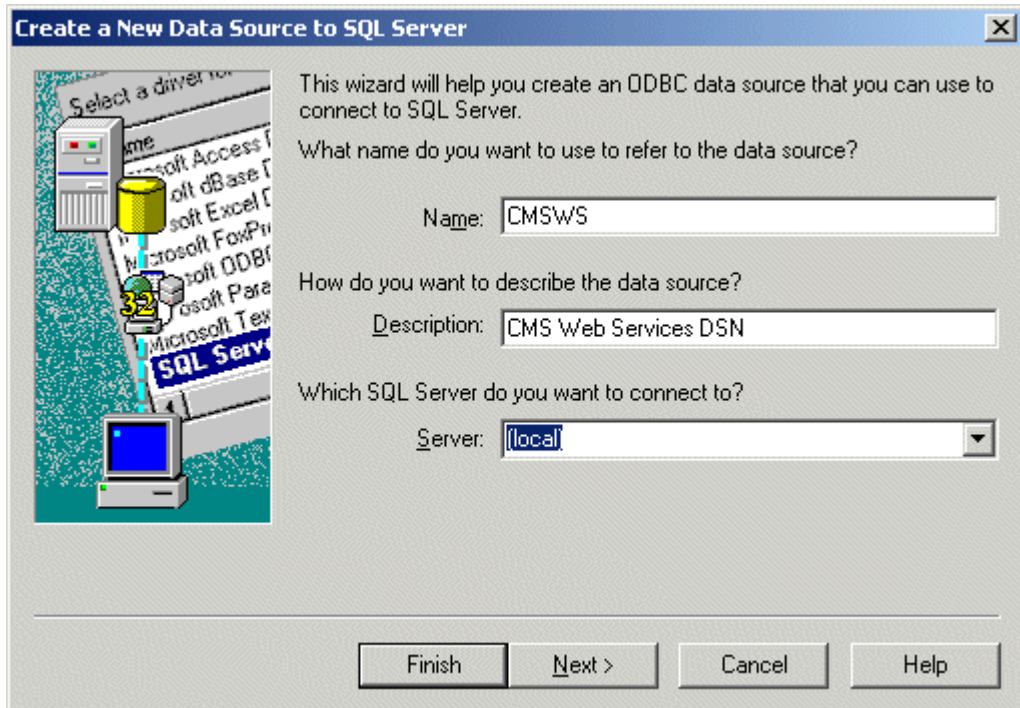


3. Click on the **Add** button on the right side of the screen.
4. Select the driver that best suits your version of MS-SQL server.



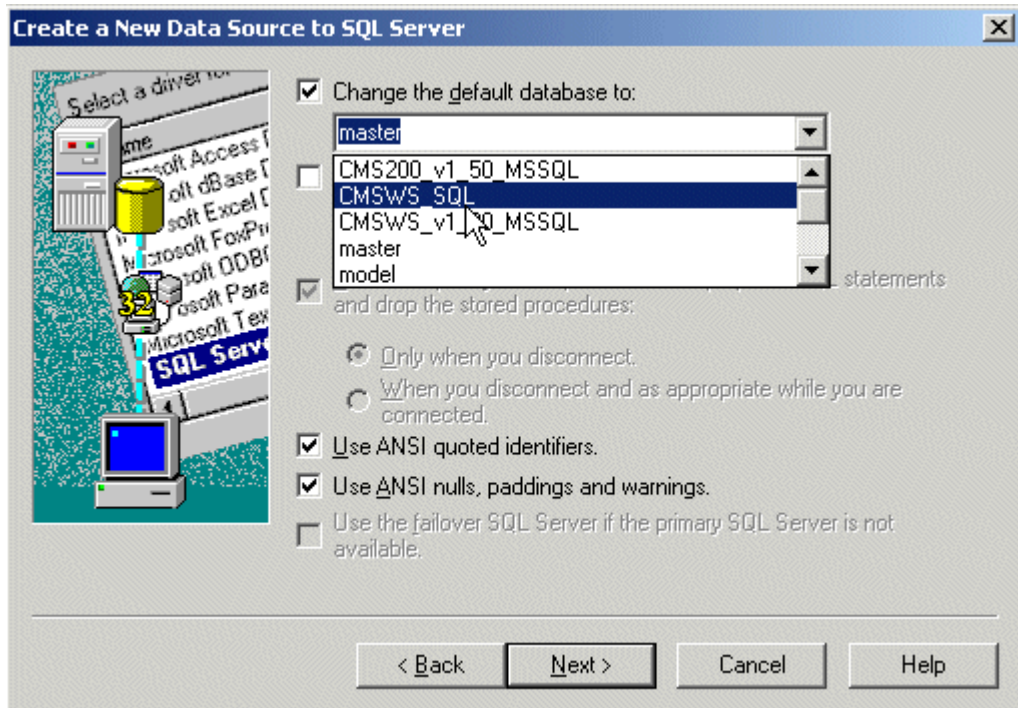
When you have selected the SQL Server driver, click the **Finish** button at the bottom of the window.

5. The next window asks you to choose a Name, Description, and choose the SQL Server to connect to.



When you finish entering the information, click the **Next** button at the bottom of the window.

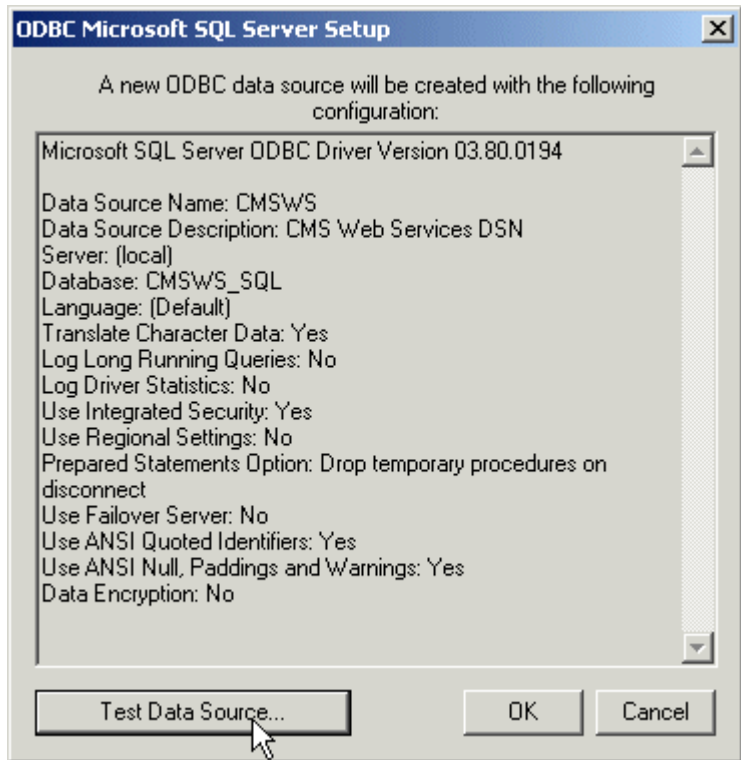
6. You will then be asked to enter information about the authentication for the DSN at the next window. Enter the necessary information and click **Next** to continue.
7. At the next window, you will need to change the default database to the one that you created earlier.



Make any other adjustments at this screen if necessary, then click **Next** to continue.

8. At the next window, choose which ever options you would like for the DSN, then click **Finish**.

9. You will then see a confirmation message with all the options a settings you chose for the datasource.



To verify that the data source was set up and configured properly, click the Test Data Source button at the bottom of the screen.

If the DSN is good, you will receive a message that the test completed successfully. If not, edit the DSN and make sure that everything is set up properly.

10. To finish, click the **OK** button at the bottom of the screen, and close the ODBC Manager.

Once the database has been created, the script has run, and the ODBC connection has been made, you are ready to run the data mover which will move the content from the default Access database to the new MS-SQL database.

Moving the Data

The next step in setting up a MS-SQL database is to run the data mover that also gets installed with Ektron CMS Web Service. The

data mover will move everything that is in the current Access database, to the MS-SQL database.

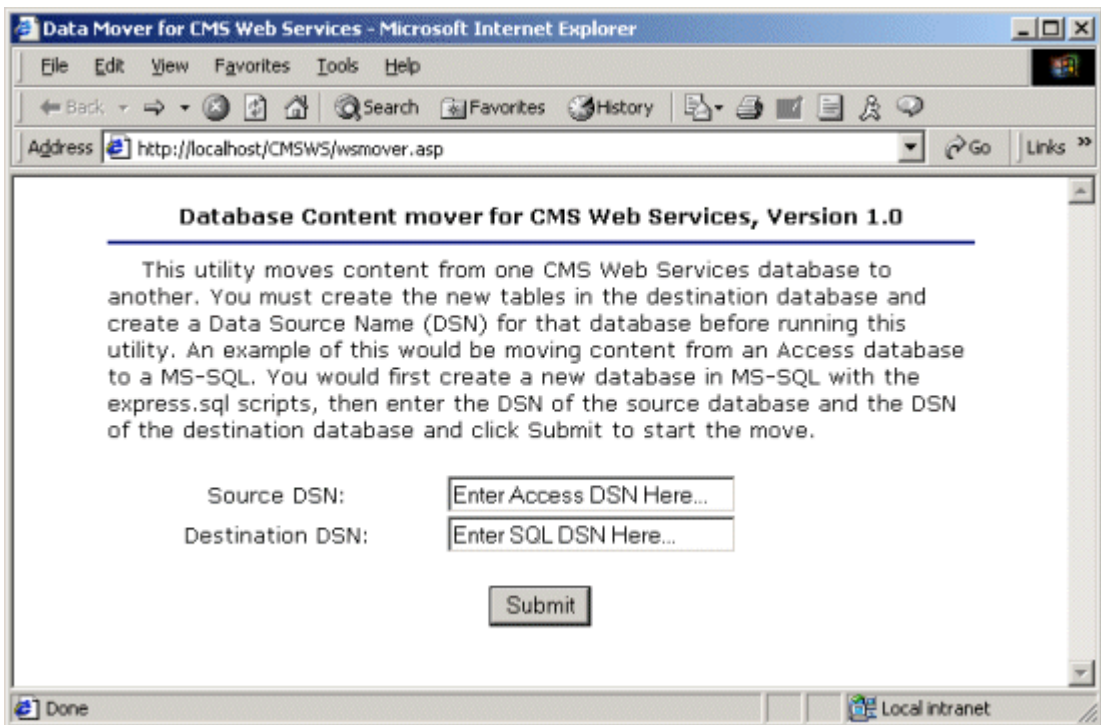
There are two files that are installed that can perform this task

- dbmover.exe
- wsmover.asp

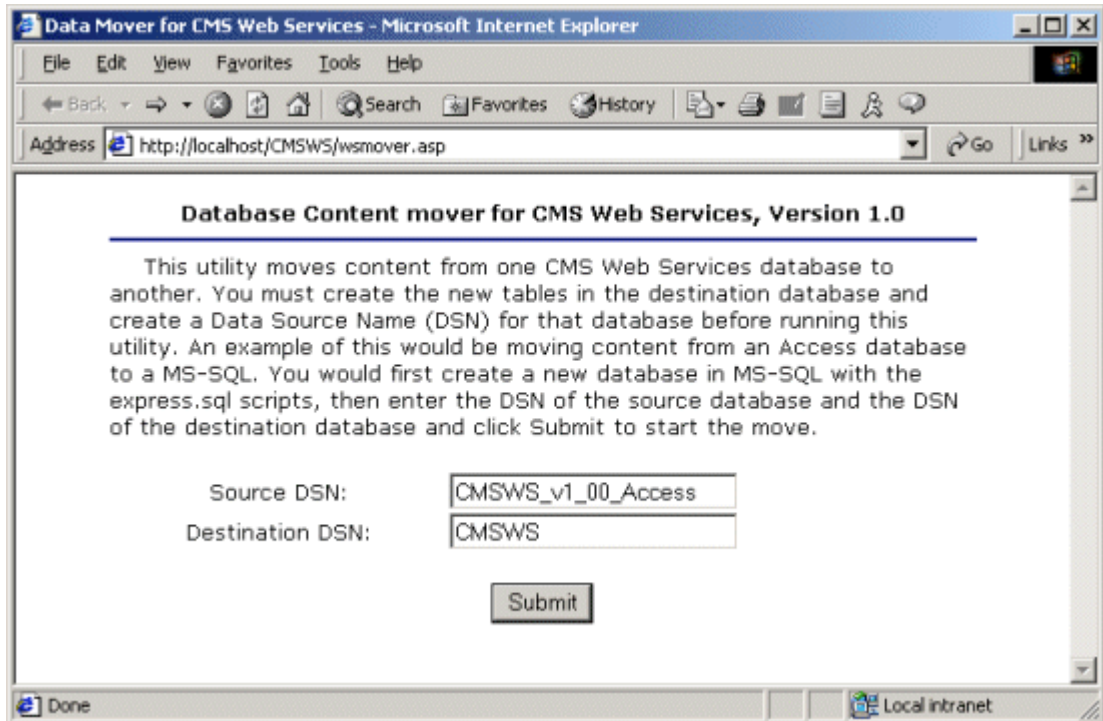
Each of these files performs the same function, they just do it differently. This next section will explain both of these processes

Using wsmover.asp to Move Data

1. Move the file **wsmover.asp** from the c:\Program Files\Ektron\CMSWS\Utilities\ directory into an .asp enabled web directory. An example is C:\inetpub\wwwroot\CMSWS
2. Call the wsmover.asp file from the web server via your browser, i.e. **http://localhost/CMSWS/wsmover.asp**



3. Add the source and destination DSNs to the appropriate fields when the page comes up. In our example, we will use **CMSWS_v1_00_Access** for the source and **CMSWS** for the destination.



4. Select the Submit button.

You should receive a confirmation message if successful. If an error occurs, please go back and check your datasources to ensure that they are set up correctly, including the names used.

Once you have moving the data, proceed to "Configuring Setup.asp" on page 39, to finish off the process.

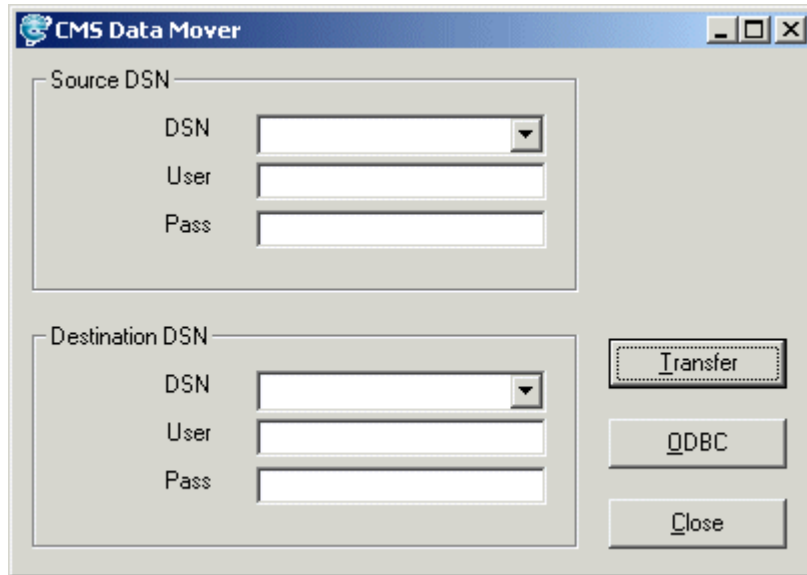
Using dbmover.exe to Move Data

To move the data using the dbmover.exe file:

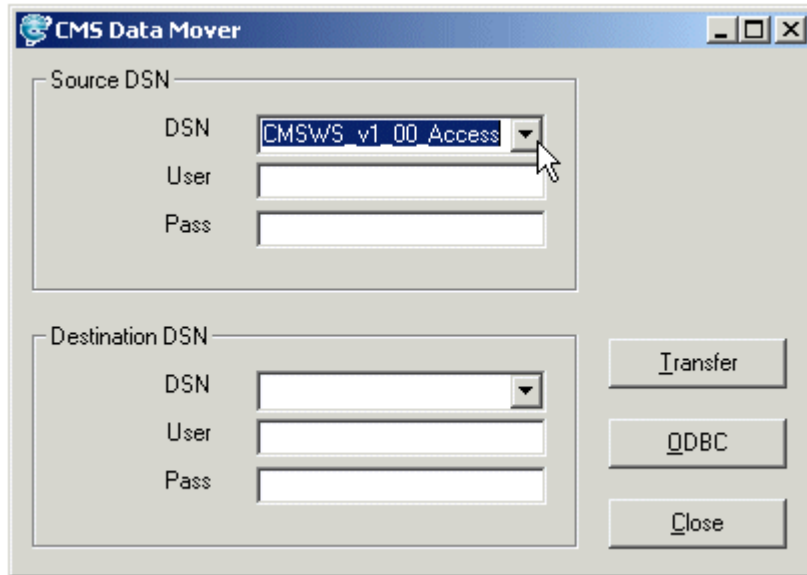
1. Begin by accessing the file in the CMSWS utilities directory which is installed, by default to \Program Files\Ektron\CMSWS\utilities.
2. Double click on the file dbmover.exe



3. Once you open this file, you will see the following screen

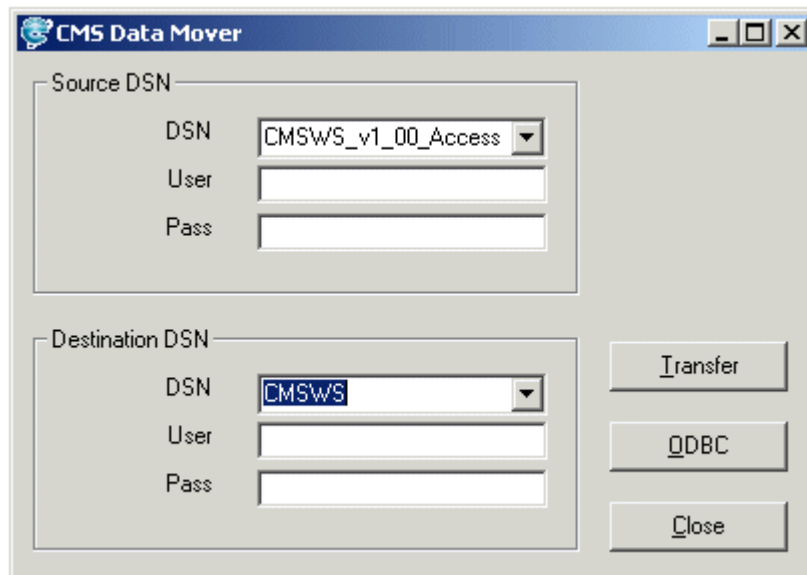


4. In the Source DSN box, click on the drop down list, and choose one of the DSNs on the list that you would like to use as the source. In this example. we will use the CMSWS Access DSN that is installed with Ektron CMS Web Service.



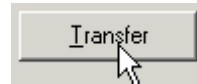
Also enter a username and password for the DSN if needed.

5. Once you have selected the source DSN, select the destination DSN on the lower part of the screen.



Also enter a username and password for the DSN if needed.

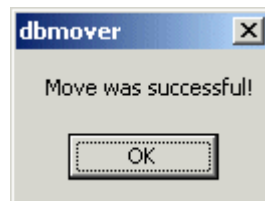
6. Once you have entered all the information, click the **Transfer** button to continue.



7. If the transfer was successful, you will see the following message box.



8. Click **OK** to close the dbmover box. And you will then see the following message



9. Click **OK** again to close this box.

Once you have successfully moved the data from the Access database to the MS-SQL, all you need to do is update the setup.asp file where the DSN is called. For information about this, see "Configuring Setup.asp" on page 39.

Configuring Setup.asp

Now that your database is set up, set the DSN name in the **setup.asp** file which is installed to \CMSWSwsscripts\setup.asp by default. This entry points the Ektron CMS Web Service to use the datasource in which you set up.

1. When you open the file, setup.asp, look for the line that starts with DSN.

```
<%
Dim DSN, DBusername, DBpassword , fileUploadPath, imageUploadPath, AppImagePath,
AppConfStr
Dim AppPostacceptFile, sitePath, AppName, PostAcceptorFile, AppPath, Version,
AppWebPath, buildNumber
DSN = "CMSWS_v1_00_Access"
sitePath = "/CMSWS/"
DBusername = ""
DBpassword = ""
Version = "1.0"
buildNumber = "1.0.0.10"
  PostAcceptorFile = "uploader.asp"
  fileUploadPath = sitePath & "uploadedfiles/"
  imageUploadPath = sitePath & "uploadedimages/"
```

2. Replace the value on that line with the new DSN that was created for the MS_SQL Server Database.

```
<%
Dim DSN, DBusername, DBpassword , fileUploadPath, imageUploadPath, AppImagePath,
AppConfStr
Dim AppPostacceptFile, sitePath, AppName, PostAcceptorFile, AppPath, Version,
AppWebPath, buildNumber
DSN = "CMSWS"
sitePath = "/CMSWS/"
DBusername = ""
DBpassword = ""
Version = "1.0"
buildNumber = "1.0.0.10"
  PostAcceptorFile = "uploader.asp"
  fileUploadPath = sitePath & "uploadedfiles/"
  imageUploadPath = sitePath & "uploadedimages/"
```

3. Save and close setup.asp, and that is it! You Ektron CMS Web Service application now configured to use MS-SQL instead of MS Access.

This name must match that of the datasource you are using. Optionally, you can also add the values for 'Dbusername' and 'Dbpassword' in this same file.

DSN-less Connection

Other than the standard connection to a database using an ODBC connection, Ektron CMS Web Service also allows you to create a DSNless connection using OLE DB. If you are planning on using OLE DB, you have two options:

- Use a UDL file
- Use an OLE DB Provider string

This section will explain both of these options.

Before You Begin

Before you can access the Ektron CMS Web Service database via OLE DB, you must know the following:

- The type of data that you want to access
- The server where the data resides
- The database in which the data is stored.

Once you know all of these, you are ready to create an OLE DB connection to your Ektron CMS Web Service Database.

Creating a UDL File

Whether you are using a Provider string or a UDL file, you can use the UDL wizard to create the file or string. Once Ektron CMS Web Service has been installed, you are ready to begin.

Windows 98/ME/NT

1. Right-click on the Desktop.
2. Select **New**
3. Select **Microsoft Data Link** to create a .udl file.

Windows 2000

1. Open **Windows Explorer** or **My Computer**.
2. Select the folder in which you want to save the .UDL file.
3. On the File menu, click **NEW** and then click **Text Document**.
4. Right-click on the text file you created in step 3, then click **Rename**. Type the new file name using a **.udl** file extension. Press **Enter**. For example: *MyUDLfile.UDL*
5. You may get a warning, message box, explaining that changing file extensions may cause files to become unusable. This is fine, click **OK**.

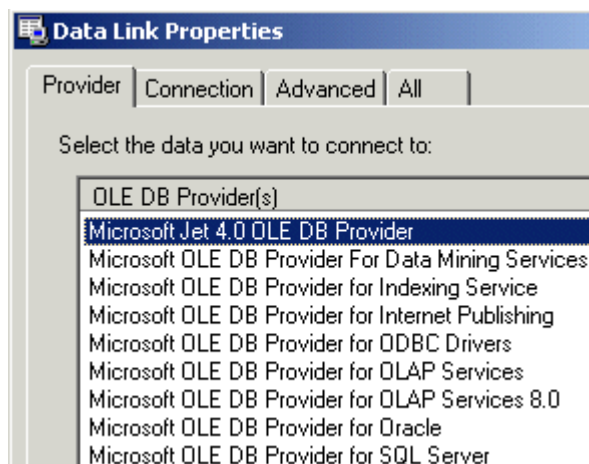
Configuring The UDL File

Once you have created the UDL file, you must now configure it to use the proper database and settings.

1. Double click on the UDL file to bring up the Data Link Properties Dialog Box.



2. When the Data Link Properties menu opens, click on the Providers tab



3. Select the driver you wish to use.

4. Click **Next >>** to move to the Connection tab
5. At the connection tab, enter the connection properties.

NOTE Each driver will require different settings. All drivers will require a user name and password.

6. Click on the **Test Connection** button to verify your connection is working correctly. Change accordingly if you get an error.
7. Select the advanced tab only if you require advanced settings.
8. When completed, click the **OK** button to save and close the UDL file.

Now that you have successfully created and configured a UDL file, you have two options:

- Configure Ektron CMS Web Service to use the UDL file
- Convert the UDL file into a Provider string, and configure Ektron CMS Web Service to use that.

Using A UDL File

Once you have created and configured the UDL file for the Ektron CMS Web Service database, you must now configure Ektron CMS Web Service for ASP to access that file.

1. Using Windows Explorer, navigate to the directory where Ektron CMS Web Service for ASP was installed to. By default, the directory is C:\inetpub\wwwroot\CMSWS
2. Save the UDL file under the CMSWS directory.
3. Open the folder \wsscripts
4. Edit the file "setup.asp"

```
<%
Dim DSN, DBusername, DBpassword , fileUploadPath, imageUploadPath,
AppImagePath, AppConfStr
Dim AppPostacceptFile, sitePath, AppName, PostAcceptorFile, AppPath,
Version, AppWebPath, buildNumber
DSN = "CMSWS_v1_00_Access"
sitePath = "/CMSWS/"
DBusername = ""
DBpassword = ""
Version = "1.0"
buildNumber = "1.0.0.10"
PostAcceptorFile = "uploader.asp"
```

```
fileUploadPath = sitePath & "uploadedfiles/"
imageUploadPath = sitePath & "uploadedimages/"
```

An example of this may be

```
<%
Dim DSN, DBusername, DBpassword , fileUploadPath, imageUploadPath,
AppImagePath, AppConfStr
Dim AppPostacceptFile, sitePath, AppName, PostAcceptorFile, AppPath,
Version, AppWebPath, buildNumber
DSN= "File name=C:\inetpub\wwwroot\cmsws\MyUDLFile.udl"
sitePath = "/CMSWS/"
DBusername = ""
DBpassword = ""
Version = "1.0"
buildNumber = "1.0.0.10"
PostAcceptorFile = "uploader.asp"
fileUploadPath = sitePath & "uploadedfiles/"
imageUploadPath = sitePath & "uploadedimages/"
```

Using a Provider String

Converting UDL file to a Provider String

Once you have created the UDL file, you can convert the information into a string that can be used in Ektron CMS Web Service

1. Right-click on the UDL file you created earlier
2. Click **Rename** from the list of options
3. Rename the file **MyUDLFile.txt**
4. You may get a warning, message box, explaining that changing file extensions may cause files to become unusable. This is fine, click **OK**.
5. Double click on the file and you will see something similar to the following.

```
[oledb]
; Everything after this line is an OLE DB initstring
Provider=Microsoft.Jet.OLEDB.4.0;Data
Source=C:\Inetpub\wwwroot\CMSWS\databases\CMSWS_v1_00_Access.mdb;Persi
st Security Info=False
```

6. The following line is the connection string from the file:

```
Provider=Microsoft.Jet.OLEDB.4.0;Data
Source=C:\inetpub\wwwroot\CMSWS\databases\CMSWS_v1_00_Access.mdb;Persi
st Security Info=False
```

This is what will be used when configuring Ektron CMS Web Service.

Configuring Ektron CMS Web Service to use the Provider String

Once you have the provider string, you will be able to configure Ektron CMS Web Service to use that.

1. Using Windows Explorer, navigate to the directory where Ektron CMS Web Service was installed to. By default, the directory is C:\inetpub\wwwroot\CMSWS
2. Save the .txt file under the CMSWS directory
3. Open the folder \wsscripts
4. Edit the file "setup.asp"

```
<%
Dim DSN, DBusername, DBpassword , fileUploadPath, imageUploadPath,
AppImagePath, AppConfStr
Dim AppPostacceptFile, sitePath, AppName, PostAcceptorFile, AppPath,
Version, AppWebPath, buildNumber
DSN = "CMSWS_v1_00_Access"
sitePath = "/CMSWS/"
DBusername = ""
DBpassword = ""
Version = "1.0"
buildNumber = "1.0.0.10"
PostAcceptorFile = "uploader.asp"
fileUploadPath = sitePath & "uploadedfiles/"
imageUploadPath = sitePath & "uploadedimages/"
```

5. At the line where it says DSN="CMSWS_V1_00_Access", change this to DSN="Provider= <string>"

An example of this may be

```
<%
Dim DSN, DBusername, DBpassword , fileUploadPath, imageUploadPath,
AppImagePath, AppConfStr
Dim AppPostacceptFile, sitePath, AppName, PostAcceptorFile, AppPath,
Version, AppWebPath, buildNumber
DSN= "Provider=Microsoft.Jet.OLEDB.4.0;Data
Source=C:\inetpub\wwwroot\SampleASP\databases\cmsws_v1_00_Access.mdb;P
ersist Security Info=False"
sitePath = "/CMSWS/"
```

```
DBusername = ""  
DBpassword = ""  
Version = "1.0"  
buildNumber = "1.0.0.10"  
  PostAcceptorFile = "uploader.asp"  
  fileUploadPath = sitePath & "uploadedfiles/"  
  imageUploadPath = sitePath & "uploadedimages/"
```