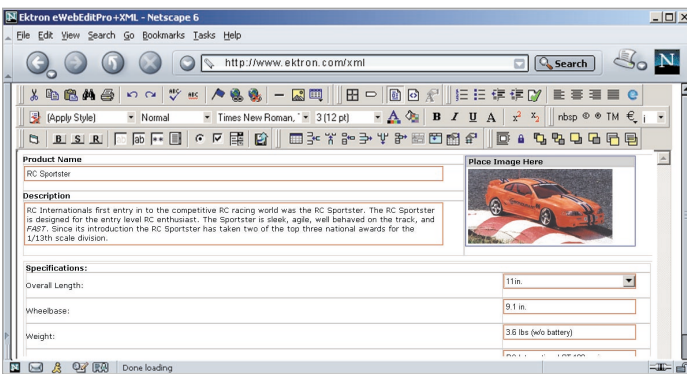


Ektron eWebEditPro+XML is a powerful yet easy to use content editor that enables anyone, regardless of technical skill, to author, capture and use XML documents and data. It also supports the authoring of Web-ready HTML content.

Why Business User XML Authoring?

Ektron eWebEditPro+XML integrates with content management systems and other Web-based applications and enables anyone to create forms that capture and validate data based on specific criteria. It enables organizations to use, share and extend that data across Web sites, applications and other organizations.



An example of Smart Web Forms for easy and intuitive content creation

Highlights of eWebEditPro+XML

eWebEditPro+XML's "data design" mode offers a graphical, drag-and-drop method to create XML data entry forms that can be deployed to internal business users on a Web site or intranet. By simplifying the process of generating Web-based forms, Ektron saves organizations time and money. Developers and business users can more rapidly build and deploy forms and enable their organizations to capture, present and extend data in a flexible way.

Version 4.1 delivers new data field types, math functionality, and enhanced real-time validation capabilities, allowing organizations to create XML with higher levels of integrity and consistency than ever before - adding value to their data and business processes.

Other highlights include:

- XHTML compliance
- Netscape and Internet Explorer support
- Easy integration into any Web page; compatible with any dynamic server
- Developer API using JavaScript objects-properties, methods, and events-lets developers extend and add their own features
- International language support-content can be entered in any language supported by the browser, plus editor dialogs can be translated into 16 languages. Others can be added.

New features in eWebEditPro+XML 4.1:

- **Validation Improvements:** eWebEditPro+XML now delivers enhanced, out-of-the-box validation choices in data entry mode. This increases the ability of Ektron's XML editor to ensure the integrity of data being entered by form users.
- **New data field types** allow for the creation of XML "smart" forms that are more powerful and deliver additional business benefits than previous editor versions.
- **Hidden Fields:** Set any field in the editor to be invisible to hide the XML element and data from end users in data entry mode and from final Web output
- **Non-editable Fields:** Allows end users to see the XML element and any data in it, but will not allow them to edit it
- **Multi-Line Text Only Fields:** A change in functionality allows plain text fields to span any number of lines (instead of limiting it to 1 line).
- **Spell-Check in All Fields:** Allows spell checking in each field of data
- **XPath Index Retrieval:** XML Path Language allows parts of an XML document to be addressed, allowing the editor to display a list of XPaths for each element.

“ Ektron's eWebEditPro+XML simplifies complex information collection processes and makes it easy to create and capture structured XML data and documents in a browser-based tool. ”

Features of Ektron eWebEditPro+XML

Full schema support during content creation

Full schema support during content creation

New schema features include loading multiple schemas at run time, using namespaces to reference schemas, right-click XML tag insertion based on the active schema to ensure validity, and editing XML tag attributes in WYSIWYG mode based on schema specifications.

Schema and DTD validation

XML content can be validated by either a schema or DTD.

XSLT support

Since the editor also produces XHTML, all content can be transformed through an XSL for distribution across multiple audiences (e.g., Internet, WAP phones, PDAs).

The best MS Word content filtering on the market!

Content copied and pasted from Microsoft Word into Ektron eWebEditPro+XML can be processed at 3 different levels: keep maximum formatting, convert for more standard, easy-to-change format, or conform to preferred styles. No other WYSIWYG editor on the market can give you this level of filtering control.

XML object model

Allows the developer to access the current XML tag with either a command or double click, which increases the functionality of an XML template.

Simple integration

With as little as two lines of code, eWebEditPro+XML can be integrated into any browser-based application. It easily replaces HTML text area fields within an existing site, and allows for rapid deployment.

Enforceable Web site standards

Ektron eWebEditPro+XML has full cascading style sheet support. The editor will actually read in your style sheet and populate the style drop-down box according to the classes you specify. The developer can also remove the font toolbar to enforce the use of approved styles.

Flexible customization

Tag definitions are simple and easy to create and make use of standard CSS style attributes. The JavaScript API properties, methods, and events are specifically for XML tagging, allowing developers to extend and add their own features for XML tagging and validation. Plus, developers can add custom buttons to the toolbar, calling their own custom dialog for users to insert/edit XML tags.

Minimized support issues

Configurable cleaning levels can produce XHTML compliant code, and MS Office 2000 filters reduce extraneous HTML tags.

Pricing and licensing

- **Standard license:** One URL and 10 users: US\$499
- **Enterprise license:** One URL and unlimited users: US\$14,999
- **More information:** For volume pricing or licensing questions, contact Ektron at info@ektron.com or +1 (603) 594-0249.

Try it online or download a 30-day trial:
www.ektron.com

Other key features of eWebEditPro+XML:

- Familiar, rich Web authoring environment
- Hyperlink and bookmark support
- Built-in default tag definitions allow for instant support of XML tags prior to creating tag definitions
- Support for Unicode, UTF-8, ISO-8859, Big 5, Shift JIS, and other encodings
- Automated, browser-based client installation for Internet Explorer 5 and later; simple .EXE for others
- Section 508 compliant interface

System requirements

Server hardware: Any Web server

Server operating system: Windows® NT Server, Windows® 2000 Server, Windows® (98, ME, XP, 2000 with PWS), Sun Solaris, Linux, or HP-UX, or any other server OS

Client hardware: Any IBM-PC compatible system; suggested minimum: Pentium 166 with 64MB RAM

Internet browser for editing: Microsoft Internet Explorer 5.0 or later, Netscape Navigator 4.7x, Netscape 6, Netscape 7, and Mozilla 1.0. If using Netscape browser, IE 5.0 or later must be installed.

Note: Note: Browsers must run under Microsoft® Windows® 98, ME, NT, 2000, XP or later

Internet browser for viewing: any browser for viewing.

Integration instructions and sample code provided for:

- Microsoft Active Server Page (ASP)
- Microsoft ASP.NET
- Macromedia/Allaire ColdFusion
- Java Server Pages (JSP)
- Perl
- PHP
- Blueworld Lasso
- Eprise Participant Server
- Interwoven TeamSite
- Vignette StoryServer
- Macromedia/Allaire Spectra
- IBM WebSphere (JSP)
- Lotus Domino



Ektron, Inc.

www.ektron.com
info@ektron.com

United States

5 Northern Blvd, Bldg. 6
Amherst, NH 03031
Phone: +1 (603)594-0249

International

192 Old Wooshehill Lane
Wokingham, RG41 3HQ
United Kingdom
Phone: +44 1189 784 933