



Ektron

eBusiness the way it should be



eWebWP for Microsoft Content Management Server 2002 Installation/Integration Manual

Release 1.2 Revision 1

Ektron® Inc.
5 Northern Blvd., Suite 6
Amherst, NH 03031
Tel: +1 603-594-0249
Fax: +1 603-594-0258
Email: sales@ektron.com
<http://www.ektron.com>

Copyright 2003 Ektron®, Inc. All rights reserved.

EKTRON is a registered trademark of Ektron, Inc.

Release 1.2 Revision 1, January, 2003

EKTRON, INC. SOFTWARE LICENSE AGREEMENT

** READ THIS BEFORE LOADING SOFTWARE**

YOUR RIGHT TO USE THE PRODUCT DELIVERED IS SUBJECT TO THE TERMS AND CONDITIONS SET OUT IN THIS LICENSE AGREEMENT. USING THIS PRODUCT SIGNIFIES YOUR AGREEMENT TO THESE TERMS. IF YOU DO NOT AGREE TO THIS SOFTWARE LICENSE AGREEMENT, DO NOT DOWNLOAD.

CUSTOMER should carefully read the following terms and conditions before using the software program(s) contained herein (the "Software"). Downloading and/or using the Software or copying the Software onto CUSTOMER'S computer hard drive indicates CUSTOMER'S acceptance of these terms and conditions. If CUSTOMER does not agree with the terms of this agreement, CUSTOMER should not download.

Ektron, Inc. ("Ektron") grants, and the CUSTOMER accepts, a nontransferable and nonexclusive License to use the Software on the following terms and conditions:

1. Right to use: The Software is licensed for use only in delivered code form. Each copy of the Software is licensed for use only on a single URL. Each license is valid for the number of seats listed below (the "Basic Package"). Any use of the Software beyond the number of authorized seats contained in the Basic Package without paying additional license fees as provided herein shall cause this license to terminate. Should CUSTOMER wish to add seats beyond the seats licensed in the Basic Package, the CUSTOMER may add seats on a block basis at the then current price for additional seats (see product pages for current price). The Basic Packages are as follows:

Ektron eMPower for ColdFusion -- Licensed for ten seats (10 named users) per URL.

Ektron CMS100 — Licensed for ten seats (10 named users) per URL.

Ektron CMS200 — Licensed for ten seats (10 named users) per URL.

Ektron CMS300 — Licensed for ten seats (10 named users) per URL.

Ektron eWebEditPro — Licensed for ten seats (10 named users) per URL.

Ektron eWebEditPro+XML — Licensed for ten seats (10 named users) per URL.

Ektron eWebWP — Licensed for unlimited seats per URL.

For purposes of this section, the term "seat" shall mean an individual user provided access to the capabilities of the Software.

The CUSTOMER may not modify, alter, reverse engineer, disassemble, or decompile the Software. This software product is licensed, not sold.

2. Duration: This License shall continue so long as CUSTOMER uses the Software in compliance with this License. Should CUSTOMER breach any of its obligations hereunder, CUSTOMER agrees to return all copies of the Software and this License upon notification and demand by Ektron.

3. Copyright: The Software (including any images, "applets," photographs, animations, video, audio, music and text incorporated into the Software) as well as any accompanying written materials (the "Documentation") is owned by Ektron or its suppliers, is protected by United States copyright laws and international treaties, and contains confidential information and trade secrets. CUSTOMER agrees to protect the confidentiality of the Software and Documentation. CUSTOMER agrees that it will not provide a copy of this Software or Documentation nor divulge any proprietary information of Ektron to any person, other than its employees, without the prior consent of Ektron; CUSTOMER shall use its best efforts to see that any user of the Software licensed hereunder complies with this license.

4. Limited Warranty: Ektron warrants solely that the medium upon which the Software is delivered will be free from defects in material and workmanship under normal, proper and intended usage for a period of three (3) months from the date of receipt.

Ektron does not warrant the use of the Software will be uninterrupted or error free, nor that program errors will be corrected. This limited warranty shall not apply to any error or failure resulting from (i) machine error, (ii) Customer's failure to follow operating instructions, (iii) negligence or accident, or (iv) modifications to the Software by any person or entity other than Company. In the event of a breach of warranty, Customer's sole and exclusive remedy, is repair of all or any portion of the Software. If such remedy fails of its essential purpose, Customer's sole remedy and Ektron's maximum liability shall be a refund of the paid purchase price for the defective Products only. This limited warranty is only valid if Ektron receives written notice of breach of warranty within thirty days after the warranty period expires.

5. Limitation of Warranties and Liability: THE SOFTWARE AND DOCUMENTATION ARE SOLD "AS IS" AND WITHOUT ANY WARRANTIES AS TO THE PERFORMANCE, MERCHANTABILITY, DESIGN, OR OPERATION OF THE SOFTWARE. NO WARRANTY OF FITNESS FOR A PARTICULAR PURPOSE IS OFFERED. EXCEPT AS DESCRIBED IN SECTION 4, ALL WARRANTIES EXPRESS AND IMPLIED ARE HEREBY DISCLAIMED.

NEITHER COMPANY NOR ITS SUPPLIERS SHALL BE LIABLE FOR ANY LOSS OF PROFITS, LOSS OF BUSINESS OR GOODWILL, LOSS OF DATA OR USE OF DATA, INTERRUPTION OF BUSINESS NOR FOR ANY OTHER INDIRECT, SPECIAL, INCIDENTAL, OR CONSEQUENTIAL DAMAGES OF ANY KIND UNDER OR ARISING OUT OF, OR IN ANY RELATED TO THIS AGREEMENT, HOWEVER CAUSED, WHETHER FOR BREACH OF WARRANTY, BREACH OR REPUDIATION OF CONTRACT, TORT, NEGLIGENCE, OR OTHERWISE, EVEN IF COMPANY OR ITS REPRESENTATIVES HAVE BEEN ADVISED OF THE POSSIBILITY OF SUCH LOSS.

6. Miscellaneous: This License Agreement, the License granted hereunder, and the Software may not be assigned or in any way transferred without the prior written consent of Ektron. This Agreement and its performance and all claims arising from the relationship between the parties contemplated herein shall be governed by, construed and enforced in accordance with the laws of the State of New Hampshire without regard to conflict of laws principles thereof. The parties agree that any action brought in connection with this Agreement shall be maintained only in a court of competent subject matter jurisdiction located in the State of New Hampshire or in any court to which appeal therefrom may be taken. The parties hereby consent to the exclusive personal jurisdiction of such courts in the State of New Hampshire for all such purposes. The United Nations Convention on Contracts for the International Sale of Goods is specifically excluded from governing this License. If any provision of this License is to be held unenforceable, such holding will not affect the validity of the other provisions hereof. Failure of a party to enforce any provision of this Agreement shall not constitute or be construed as a waiver of such provision or of the right to enforce such provision.

If you fail to comply with any term of this License, YOUR LICENSE IS AUTOMATICALLY TERMINATED. This License represents the entire understanding between the parties with respect to its subject matter. YOU ACKNOWLEDGE THAT YOU HAVE READ THIS AGREEMENT, THAT YOU UNDERSTAND THIS AGREEMENT, AND UNDERSTAND THAT BY CONTINUING THE INSTALLATION OF THE SOFTWARE, BY LOADING OR RUNNING THE SOFTWARE, OR BY PLACING OR COPYING THE SOFTWARE ONTO YOUR COMPUTER HARD DRIVE, YOU AGREE TO BE BOUND BY THIS AGREEMENT'S TERMS AND CONDITIONS. YOU FURTHER AGREE THAT, EXCEPT FOR WRITTEN SEPARATE AGREEMENTS BETWEEN EKTRON AND YOU, THIS AGREEMENT IS A COMPLETE AND EXCLUSIVE STATEMENT OF THE RIGHTS AND LIABILITIES OF THE PARTIES.

©Copyright 1999 - 2003 Ektron, Inc. All rights reserved.

LA10031, Revision 1.4

Table of Contents

Product Overview	1
About this Manual	2
Scope of This Manual	2
Additional Documentation	2
eWebWP Support Page	2
System Requirements	3
License Keys	4
License Key Format	4
Inserting the License Key	4
License Key Check	5
Invalid License Key Message	5
Domains in which You Can Use the License Key	6
Register Domains, not IP Addresses	6
Server Installation	7
No Previous Release Installed	7
Same Release is Installed	11
Testing the Installation	13
Client Installation	14
Sample Files	16
Edit Server Control Sample	16
Integrating eWebWP on an MCMS 2002 Page	20
Background Information	20
Enabling the eWebWP Placeholder	20
Adding a Reference to eWebWPControlLibrary.dll	20
Add an eWebWP Placeholder in the Toolbox	23
Build the Project	25
Inserting a Placeholder for eWebWP	25
Inline versus Popup Editors	26
Using oncreate to Customize eWebWP	28
Customizing eWebWP Parameters.....	28

Uninstalling from a Server.....	30
--	-----------

Product Overview

eWebWP is a Web-based, WYSIWYG (**W**hat **Y**ou **S**ee **I**s **W**hat **Y**ou **G**et) editor for webcontent. **eWebWP** allows content managers to create and edit Web pages in a word processor-like environment directly from a Web browser. The editor supports hypertext and images.

The editor saves content as HTML or XHTML that can then be displayed in dynamic Web pages without the editor being present. **eWebWP** is a great tool for any content management team that needs to enter and update formatted text with no knowledge of XHTML.

About this Manual

Scope of This Manual

The beginning chapters of this manual explain the steps required to install **eWebWP** on a

- Windows server
- non-Windows server
- hosted server

Subsequent sections of this manual explain additional installation procedures (such as updating your license keys), and how to uninstall **eWebWP**.

Additional Documentation

The following **eWebWP** manuals are also available from the [documentation page](#) of the **eWebWP** section of Ektron's Web site.

- **eWebWP** User Guide
- **eWebWP** Developer's Reference Guide

eWebWP Support Page

The **eWebWP** support page, www.ektron.com/support/ewebwp_support.cfm, includes links to a Knowledge Base, FAQs, User Forum, etc.

System Requirements

Browser for Editing and Viewing	Determined by Microsoft on http://www.microsoft.com/cmserver/evaluation/sysreqs/default.htm
Client Hardware and Operating System	Determined by Microsoft on http://www.microsoft.com/cmserver/evaluation/sysreqs/default.htm
Web Server Hardware and Operating System	Microsoft Content Management Server 2002 server software (release candidate). Additional requirements determined by Microsoft on http://www.microsoft.com/cmserver/evaluation/sysreqs/default.htm

License Keys

Ektron controls the use of **eWebWP** through a license key, a unique code assigned to your domain when you purchase **eWebWP**. Your license key is included as an attached .txt file to the email that Ektron sends when you request or purchase **eWebWP**.

Typically, the ewebwplicensekey.txt file stores a license key for a public server, a test server, and a development server. But, you can enter the keys in any manner.

License Key Format

A license key typically begins with a base URL (domain name, computer network name, or IP address) followed by descriptor tags, a question mark, a series of numbers, a hyphen and one or two digits signifying release number. For example:

```
"dev.mysite.com(exp-2004-04-10)(flash)(users-10)?12341234123412341234123412-1";,www.mysite.com(exp-2004-04-10)(flash)(users-10)?12341234123412341234123442-1";
```

The above example illustrates how two license keys should appear in ewebwplicensekey.txt, separated by a comma.

License keys cannot contain spaces or line breaks.

Inserting the License Key

After you download the executable (.exe) file, you are prompted to enter a license key during installation. **eWebWP** stores the license key that you enter in the ewebwplicensekey.txt file, located in the directory to which you install **eWebWP**.

If you install a test version of **eWebWP**, and later purchase it, Ektron sends you email with license keys for the purchased product. When you receive new

license keys, replace the old keys with new ones. If you do not, when the test license key expires, users cannot access eWebWP.

License Key Check

When you load a Web page that contains the editor, **eWebWP** checks the license key(s) against the domain.

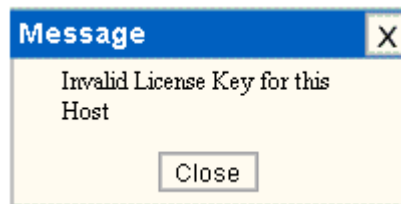
- If the URL of any valid license key matches the URL of the page being accessed, the editor appears.
- If no valid license key is found for the URL of the page being accessed, the editor is disabled.

To help you troubleshoot the problem, the About eWebWP dialog window appears and displays the license keys set in the `ewebwplicensekey.txt` file.

Invalid License Key Message

If you have a broken license key or a license key with an incorrect base URL, an **Invalid License** error message appears in the eWebWP client.

The error may be caused by client, server, or proxy caching. You may be able to resolve this problem by clearing the cache of the client, server, and any proxies between them. Alternatively, the scripting code in your Web application may point to an **eWebWP** installation directory that is different from the one you entered the keys into.



Domains in which You Can Use the License Key

The license key is assigned to your base URL, which is typically your domain name. For example, if your domain name is `www.mycompany.com`, the license key follows this pattern: `www.mycompany.com?1234567890`. The key also works with `mycompany.com`, that is, without the `www`.

You can use the editor in any subdirectory to that URL. For example, in an .NET environment, you can use `www.mycompany.com/sales/editpro.aspx`.

Each domain name requires its own license key. For example, to support the domain names, `www.mycompany.com`, `sales.mycompany.com` and `support.mycompany.com`, you need three license keys.

Register Domains, not IP Addresses

When you purchase a license key, be sure to register a domain name, not an IP address. For example, register `www.mycompany.com`, not `192.168.0.1`.

Although **eWebWP** supports IP addresses, the domain that you license becomes the required URL in the browser address. For example, if you register `192.168.0.1` in an .NET environment, you would need to access the page with the editor as `http://192.168.0.1/somedirectory/editorpage.aspx`.

Since users would typically not identify a Web page by its IP address, you should register the domain name instead.

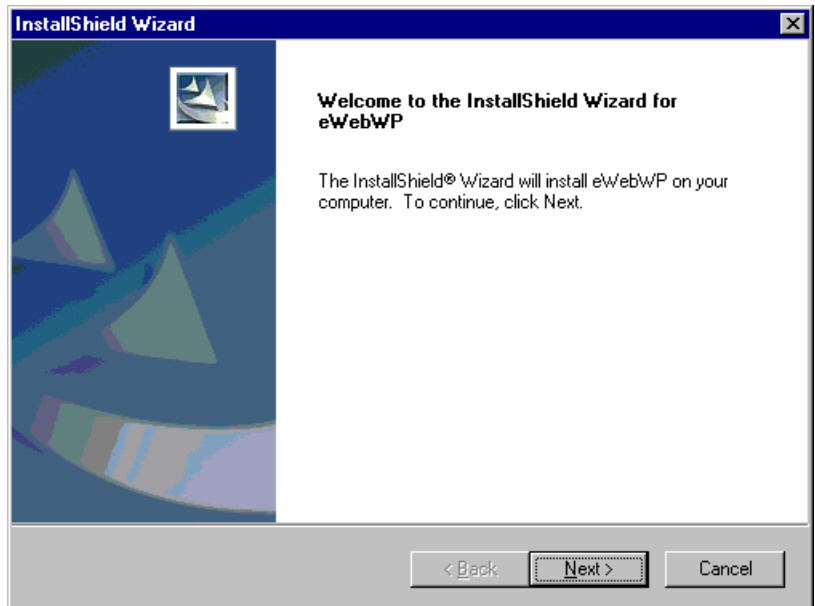
Server Installation

After you receive email from Ektron that contains license keys and download the installation file, follow these steps to install **eWebWP** on a Windows server.

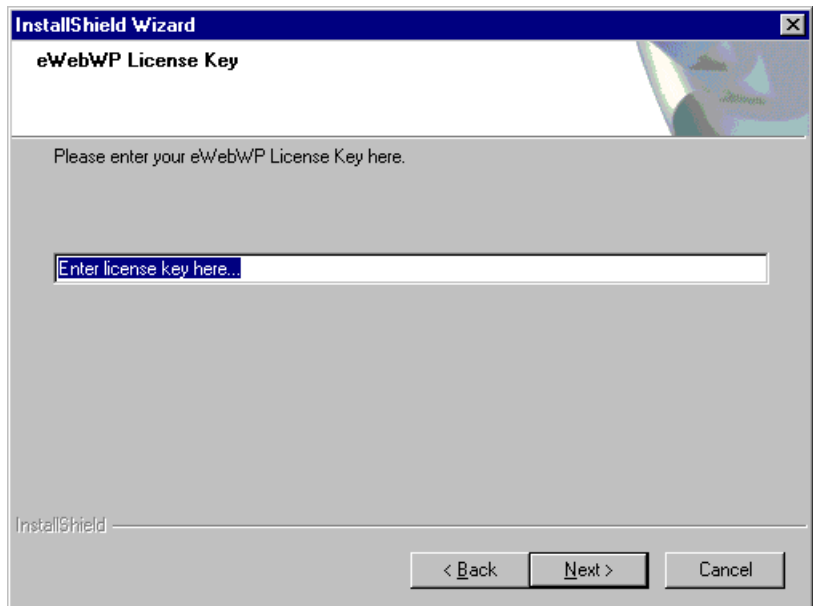
If you have	Read
Previously not installed eWebWP	"No Previous Release Installed" on page 7
Previously installed eWebWP	"Same Release is Installed" on page 11

No Previous Release Installed

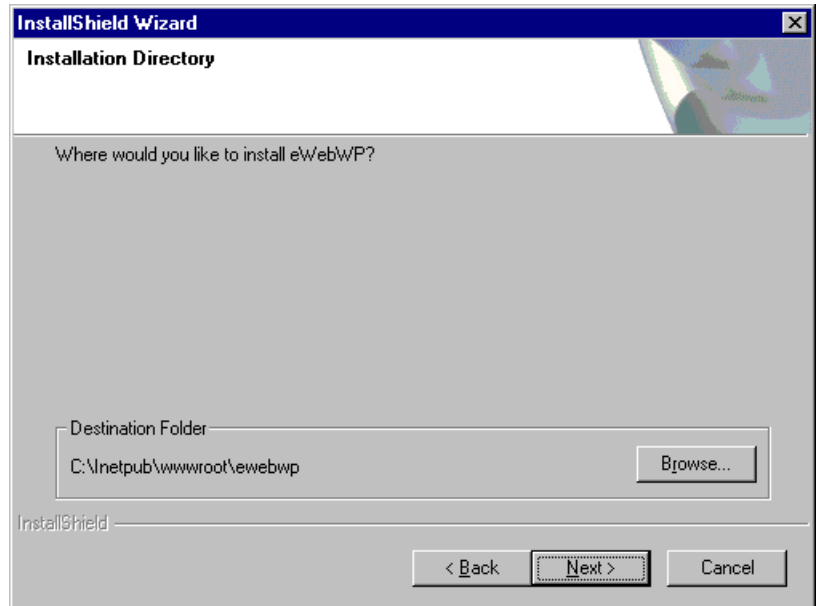
1. Double click the installation file. The installation begins. Follow the instructions on the screen.



2. When you are prompted to enter license keys, enter the license keys you received via email from Ektron. (For more information, see “License Keys” on page 4.)

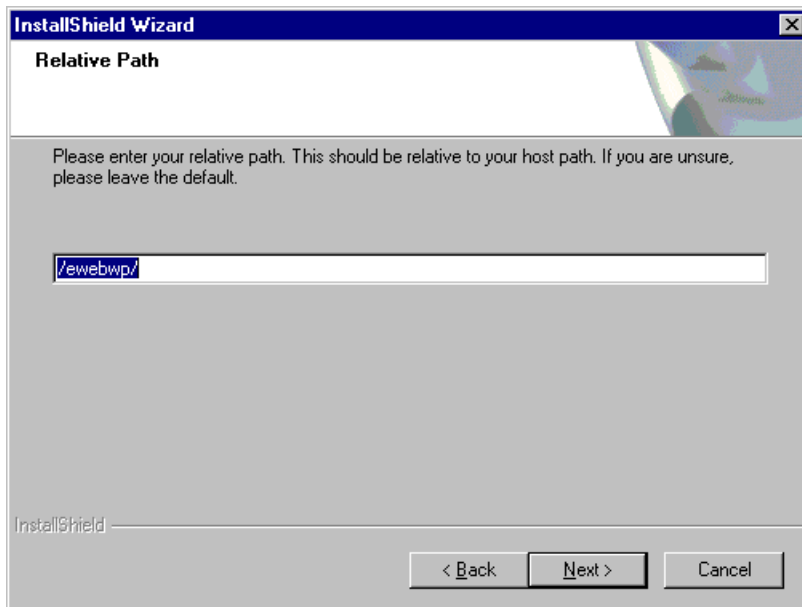


3. A screen (illustrated below) prompts you to specify a destination folder. If your dynamic Web server software is installed in
 - `c:\inetpub\wwwroot`, accept the default destination, **eWebWP**
 - a different directory, browse to that directory and install **eWebWP** thereIf the folder you specify does not exist, the setup program offers to create it for you.

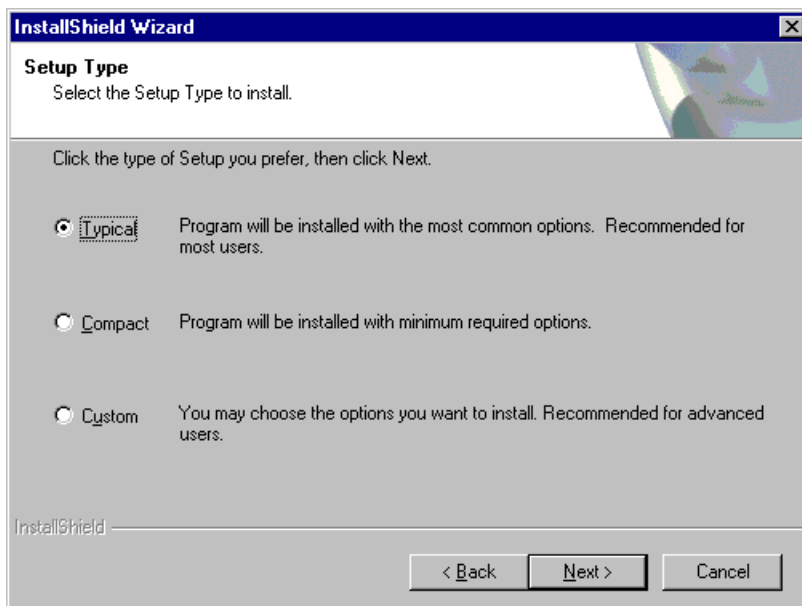


- The next screen (below) prompts you to enter the path to the **eWebWP** folder relative to the hostname.

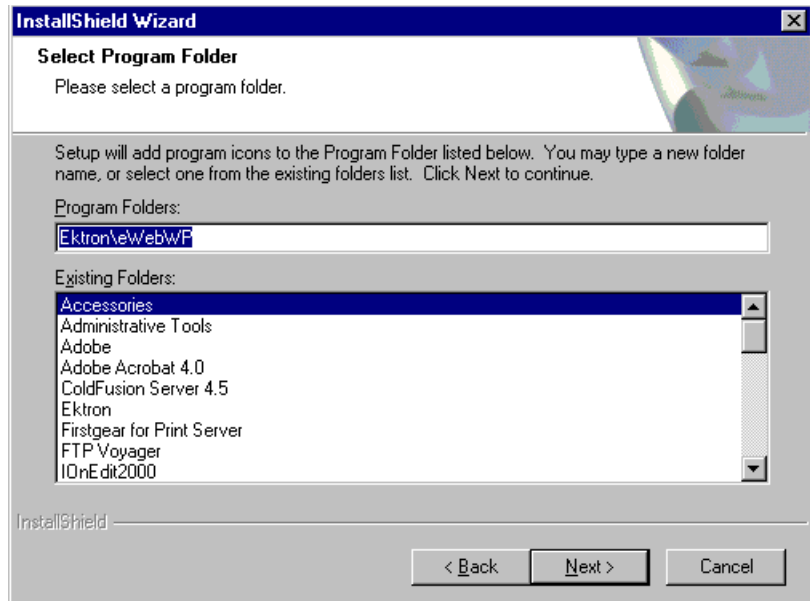
If you accepted the default destination directory in Step 3, accept the default path `/ewebwp/`. If you entered a different path in Step 3, enter that path here.



- The next screen (below) prompts you to specify the kind of setup to install. If you are unsure, leave the default (**Typical**).



- The next screen (below) prompts you to select the folder to which to install program icons for **eWebWP**.



- A setup screen appears, indicating the progress of copying files to your server.
- When the copying is finished, a new window informs you. To learn about installing **eWebWP** on clients, see “Client Installation” on page 14.

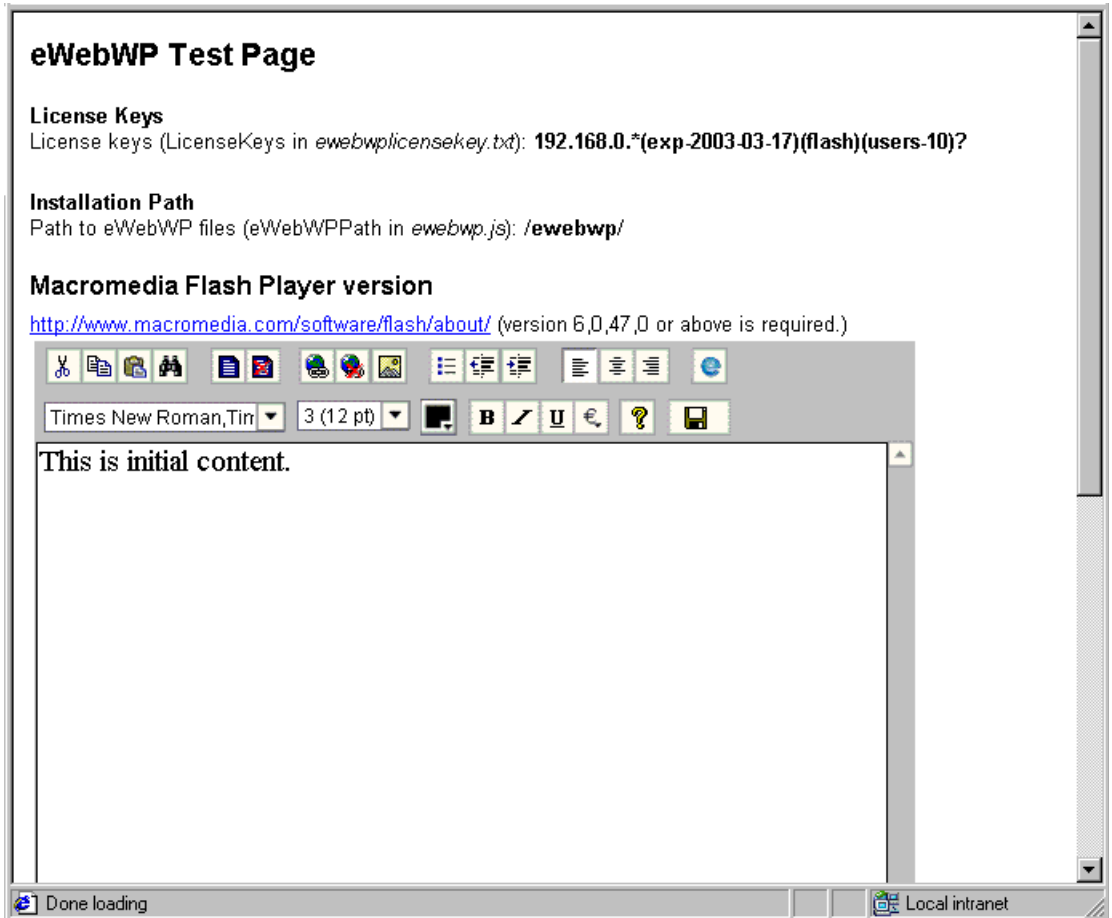
Same Release is Installed

- If the same release of **eWebWP** is installed on your server, a screen prompts you to **Modify**, **Repair** or **Remove** the program.
- Select
 - **Modify** if you want to install or uninstall any components on the Select Components Window of the installation program.

- **Repair** if you want to reinstall all files and components that were installed previously. You would use this option if you modified some **eWebWP** files (for example, ewep.js) and want to restore them to their original state.
 - **Remove** if you want to delete **eWebWP** from your server. This choice deletes all files, including the license key file. If you then want to install a new release of **eWebWP**, see “No Previous Release Installed” on page 7.
3. A setup screen appears, indicating the progress of copying files to your server.
 4. When the copying is finished, a new window informs you.

Testing the Installation

To test the installation, click the Windows **Start** button > **Programs** > **Ektron** > **eWebWP** > **Test eWebWP**. If you see an editor on the page (as illustrated below), the installation was successful.

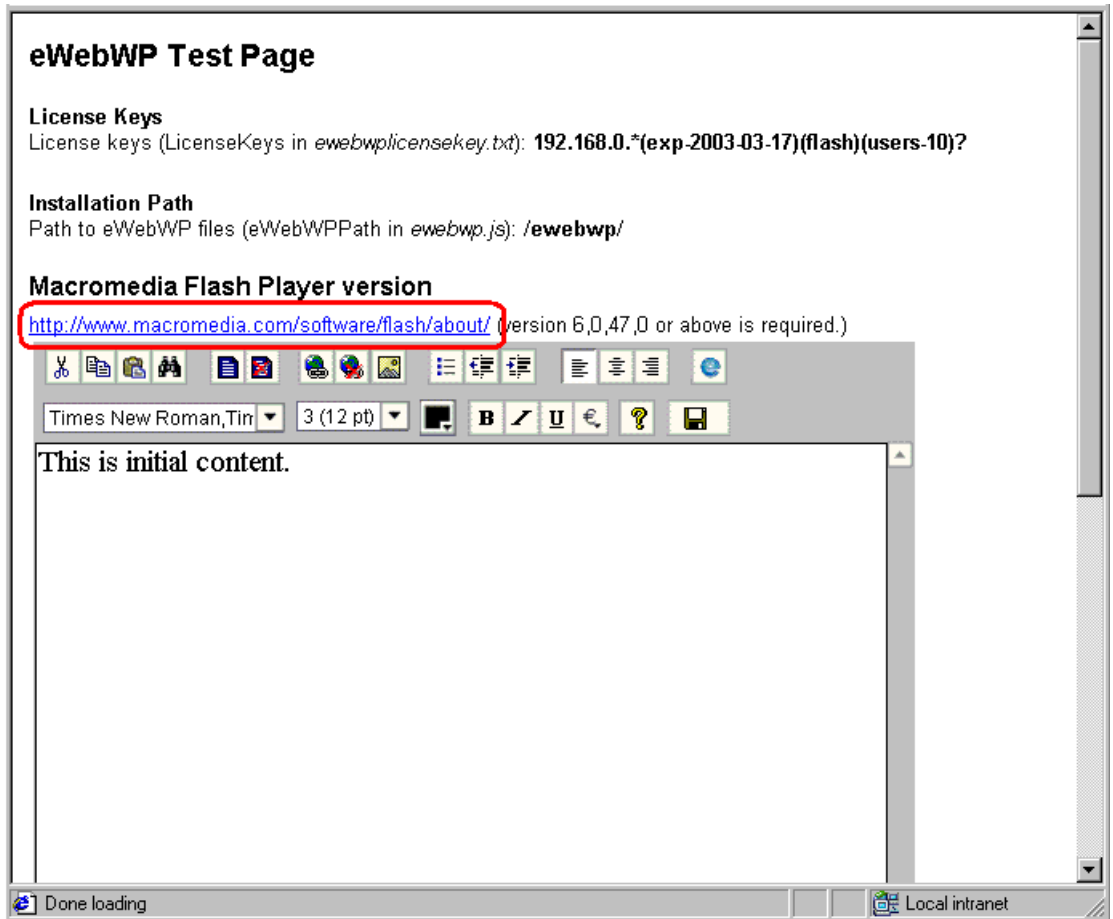


Client Installation

The Macromedia Flash Player (version 6,0,47,0 or above) must be installed on each client that uses Ektron **eWebWP**.

If the free Flash Player is not installed, users can go to <http://www.macromedia.com/software/flash/about/> and follow the directions on the screen to install the player.

A link to this Web page (illustrated below) is available from the test page, accessible from **Start Menu > Programs > Ektron > eWebWP > Test eWebWP**.



After completing the installation, the user can begin using eWebWP.

Sample Files

Ektron provides sample files that illustrate how to use **eWebWP** with Microsoft's Content Management Server 2002. You can use the sample to familiarize yourself and your users with **eWebWP**.

These files are installed automatically when you install **eWebWP**. Sample files are installed to the `ewebwp/samples` directory, which has one subdirectory for each sample.

You should copy these samples to another directory or rename them, and then modify them as needed for your users. If you do not copy them, any changes you make could be overwritten when you reinstall or upgrade **eWebWP**.

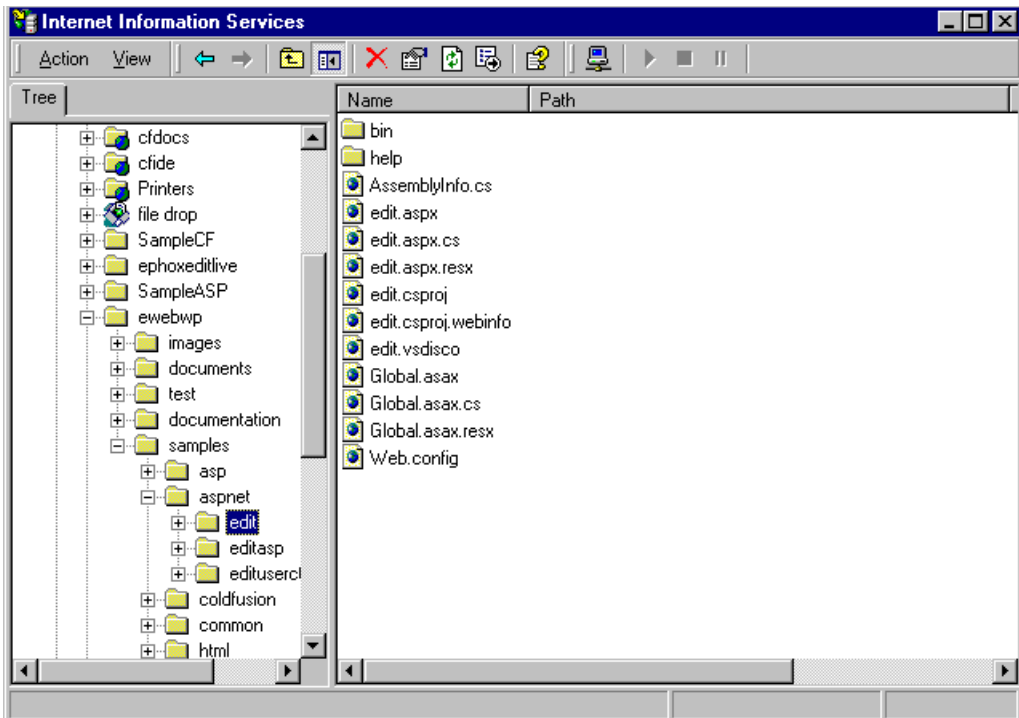
Edit Server Control Sample

The edit sample page provides an in-line editor.

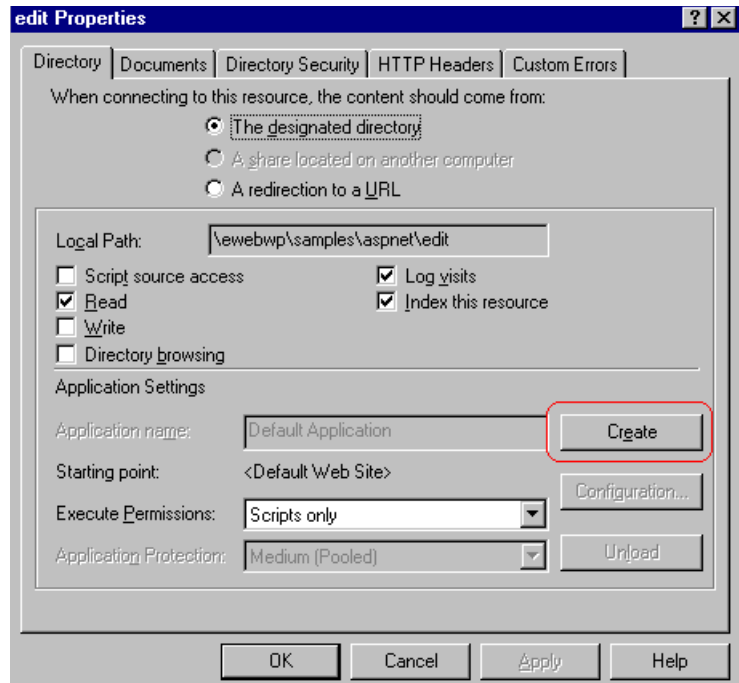
NOTE The ASP.NET edit server control sample requires you to follow these steps prior to use. All other samples require no set up.

Before you can run the edit server control sample, you must designate the `aspnet/edit` folder as an application root. Follow these steps to do so.

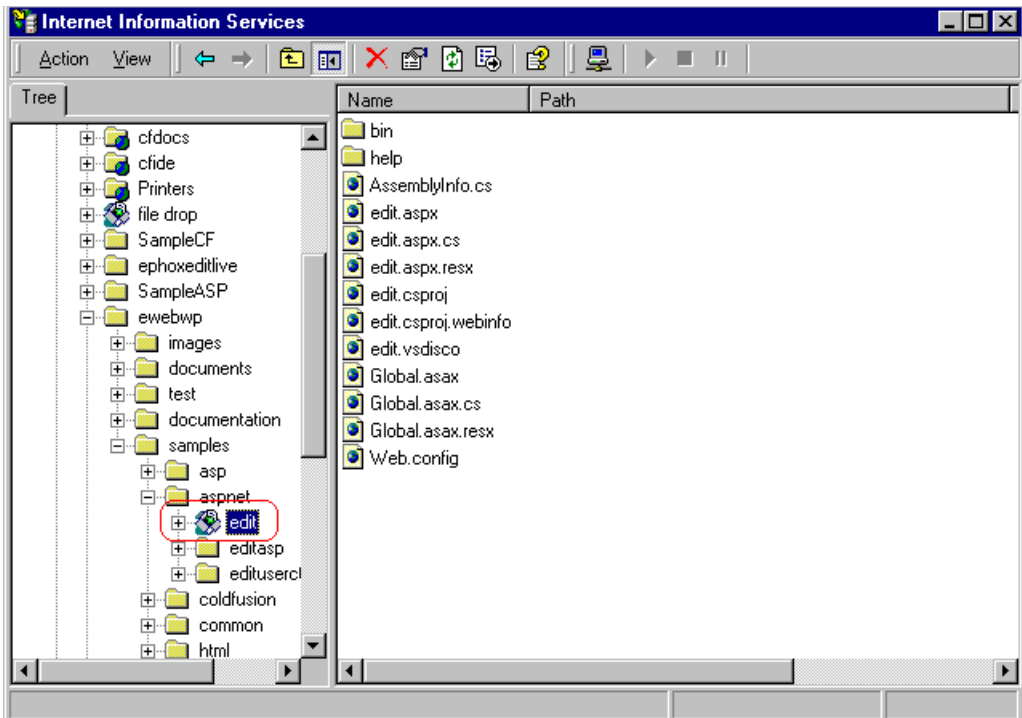
1. Open the Internet Service Manager using this path **Start button > Settings > Control Panel > Administrative Tools > Internet Services Manager**.
2. Navigate to the **ewebwp->samples->aspnet->multiedit** directory.



3. Right click the edit directory, select **Properties**, and then click the **Create** button on the **Directory** tab (or **Virtual Directory** tab) of the Properties dialog.



4. Click **OK** to update the multiedit directory with the new setting. The multiedit directory icon should now be the icon for an application root, as shown here.



Integrating eWebWP on an MCMS 2002 Page

Background Information

Microsoft's Content Management Server 2002 (MCMS 2002) provides several kinds of placeholders that you can use to position a content block on a Web page. When integrating **eWebWP**, Ektron recommends that you use a section placeholder type. If you are using an inline editor, the preferred placeholder type is flash.

See Also: ["Inline versus Popup Editors" on page 26](#)

For more information on how to create and use placeholders, please see help files of MCMS 2002 server.

Enabling the eWebWP Placeholder

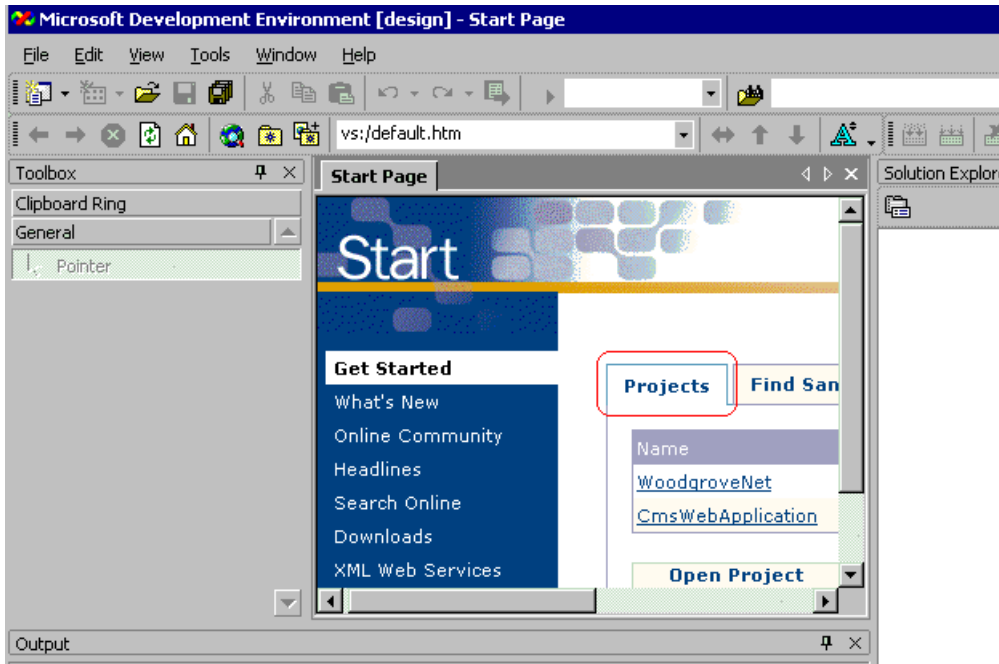
After you install **eWebWP** for MCMS 2002, you must complete the following three tasks before you can insert **eWebWP** placeholders.

1. [Add a reference to eWebWPControlLibrary.dll.](#)
2. [Add an eWebWP placeholder in the toolbox.](#)
3. [Build the project.](#)

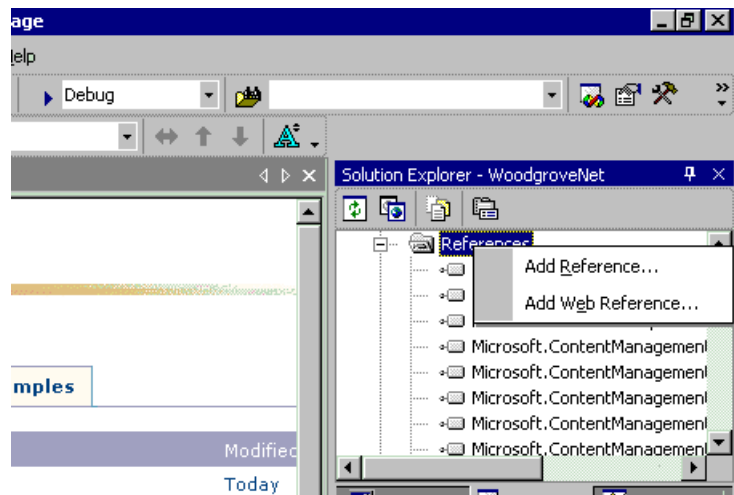
Adding a Reference to eWebWPControlLibrary.dll

To add a reference to the eWebWPControlLibrary.dll file, follow these steps.

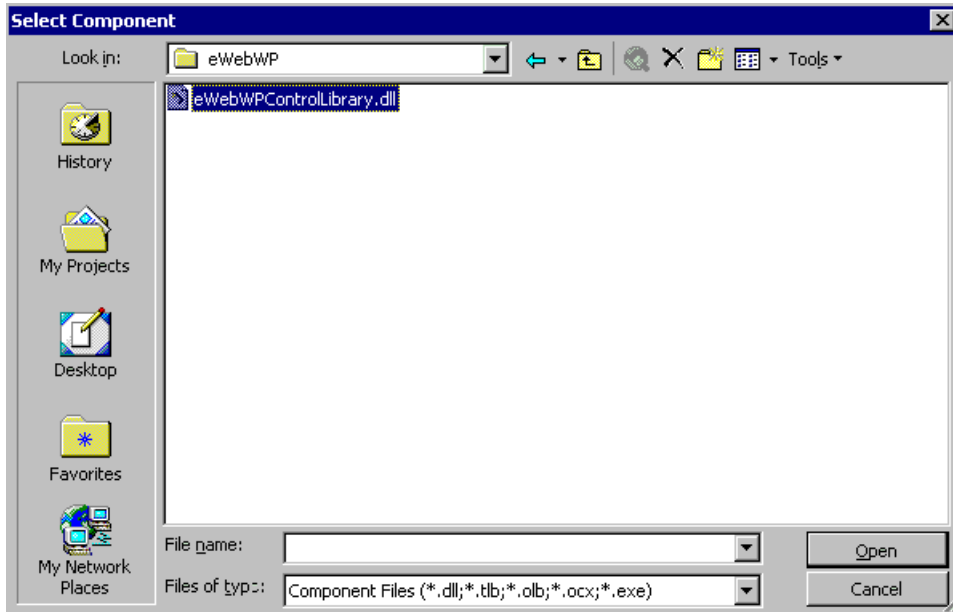
1. Open Microsoft Visual Studio.NET.
2. Open your Web site's project file.



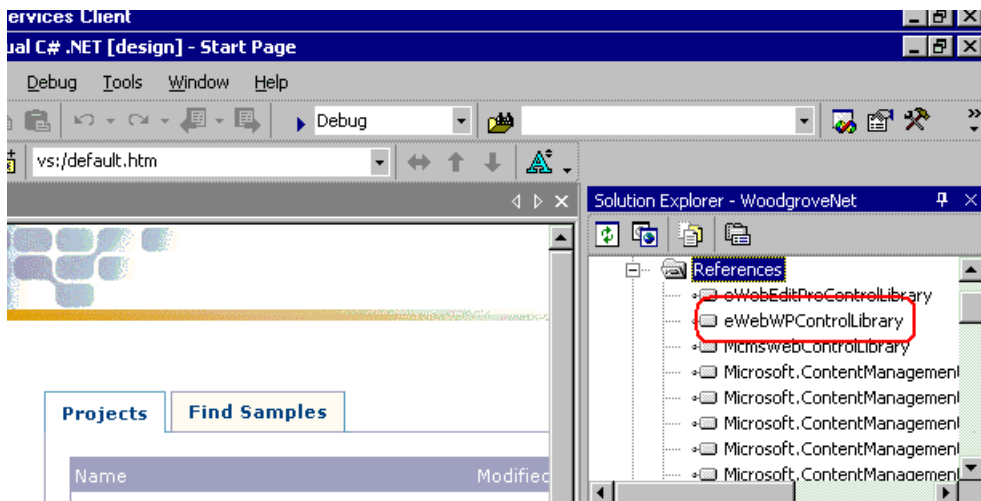
3. In the Solution Explorer, click your project file (for example, Solution "Woodgrovenet" > Woodgrovenet).
4. Expand the nodes of the project file and right-click on References.
5. Click **Add Reference**.



6. A dialog box appears. Click **Browse**, navigate to C:\Program Files\Ektron\eWebWP and select eWebWPControlLibrary.dll. Click **Open** to insert it.



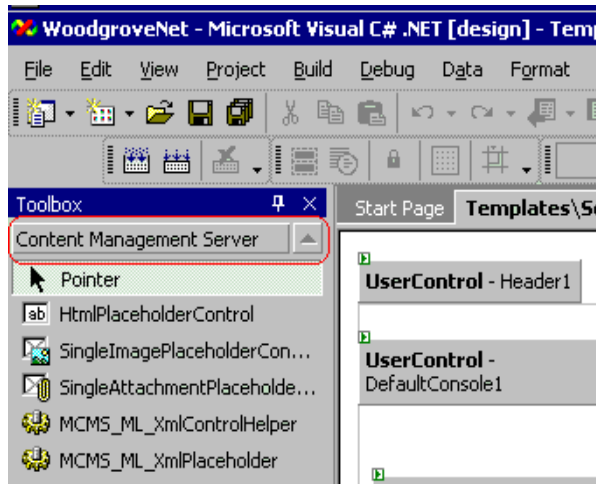
7. Verify that eWebWPControlLibrary.dll was added to the project's references list. To do this, navigate to the .dll using Solution Explorer.



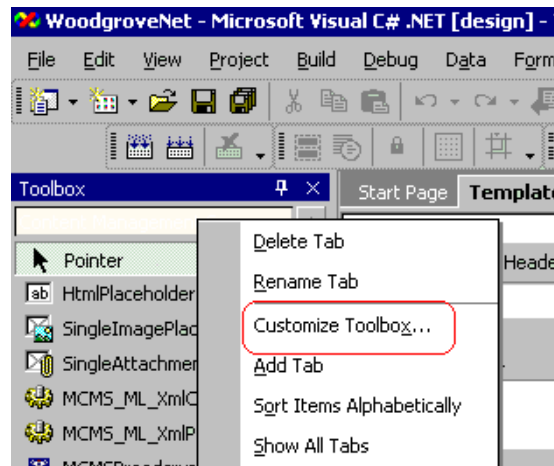
Add an eWebWP Placeholder in the Toolbox

Before you can insert an eWebWP placeholder, it must be available in Visual Studio .NET's toolbox. Follow these steps to add the placeholder to the toolbox.

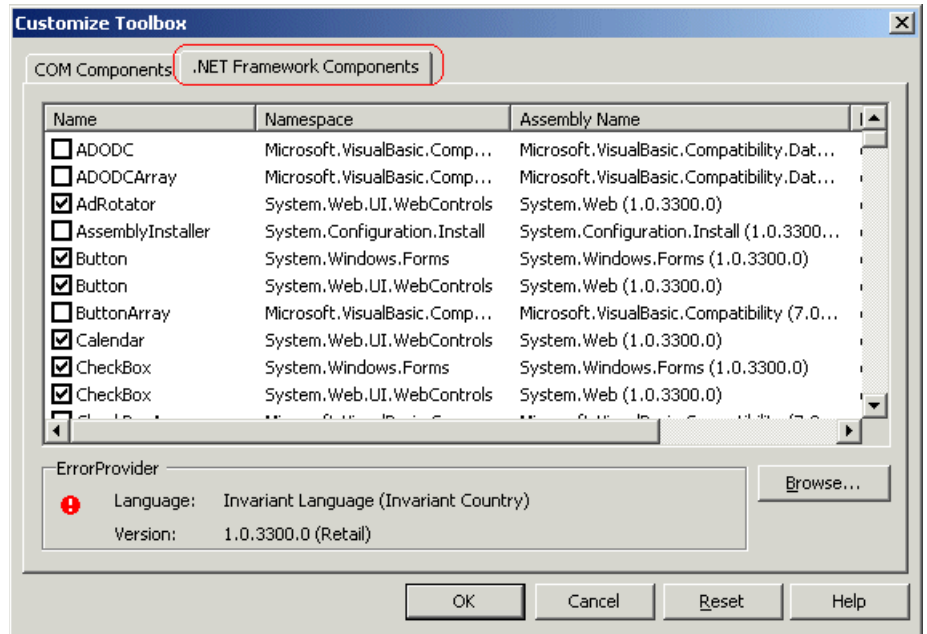
1. Under **Toolbox**, select the Content Management Server tab.



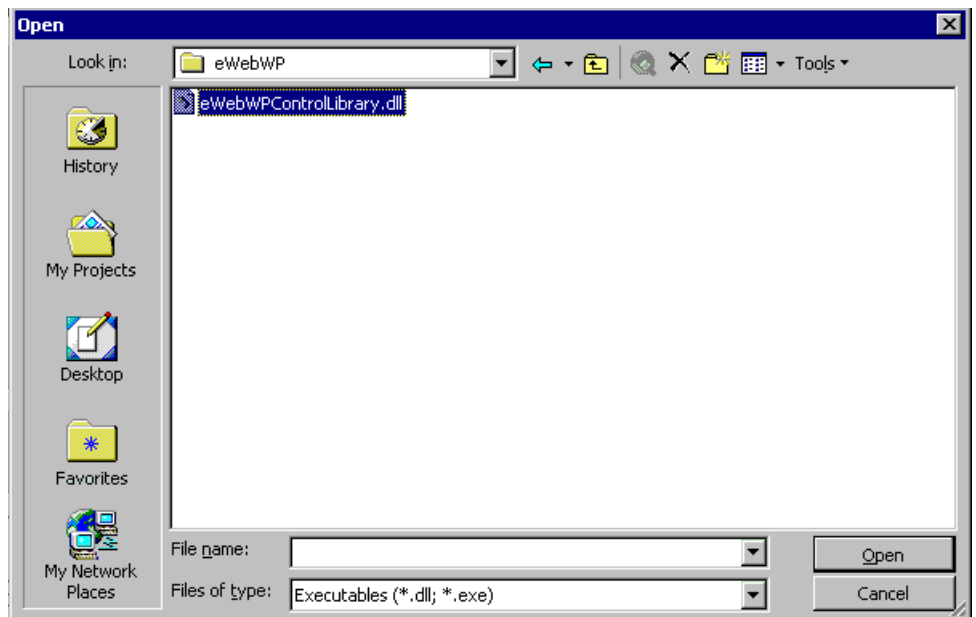
2. Right click the mouse and select **Customize Toolbox**.



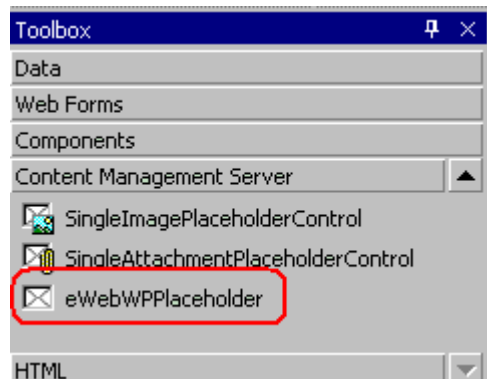
3. The Customize Toolbox dialog appears. Click the **.NET Framework Components** tab.



4. Click **Browse**, navigate to your program files directory, and select `Ektron/eWebWP/eWebWPControlLibrary.dll`.



5. Select eWebWPControlLibrary.dll and click **Open**.
6. The Customize Toolbox dialog reappears. Click **OK**.
7. Notice that the .dll file appears as **eWebWP Placeholder** in the toolbox.



Build the Project

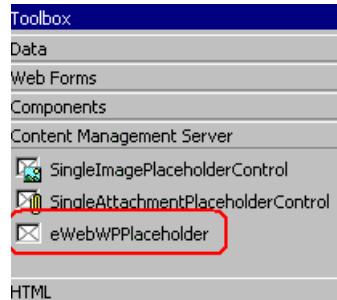
Before you can insert the **eWebWP** placeholder onto a Web page, you must build the project file so that editor is ready for use.

NOTE You only need to do this once, after the editor is installed.

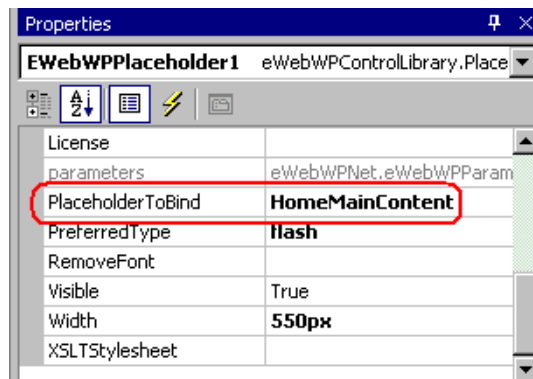
Inserting a Placeholder for eWebWP

After you install the placeholder and build the project file, you can drag and drop the **eWebWP** placeholder onto a Web page. Follow these steps to do so.

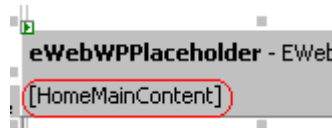
1. Open Visual Studio.NET and create a new page or open an existing one.
2. Display Visual Studio.NET's Toolbox.
3. Click Content Management.
4. Scroll down until you see **eWebWPPlaceholder**.



5. Drag the eWebWPPlaceholder and drop it into the section of the page where you want it to appear.
6. Bind the placeholder to a placeholder definition. To do this, select the placeholder, right click the mouse, and select **Properties**. Within the Data property category, click **PlaceholderToBind**. Click the small black down arrow to see your choices and select a template whose type is **HTMLPlaceholderDefinition**.

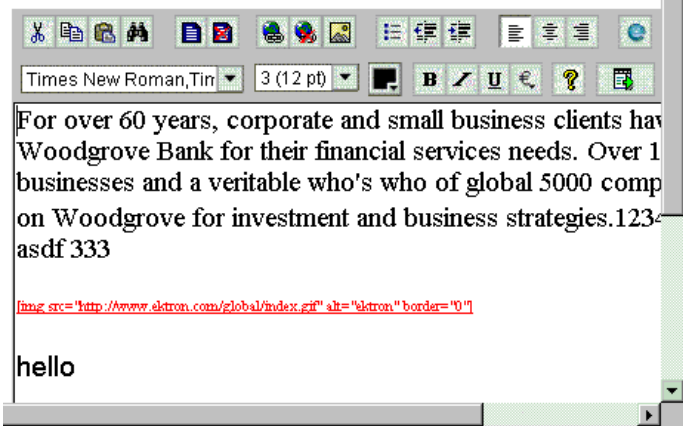
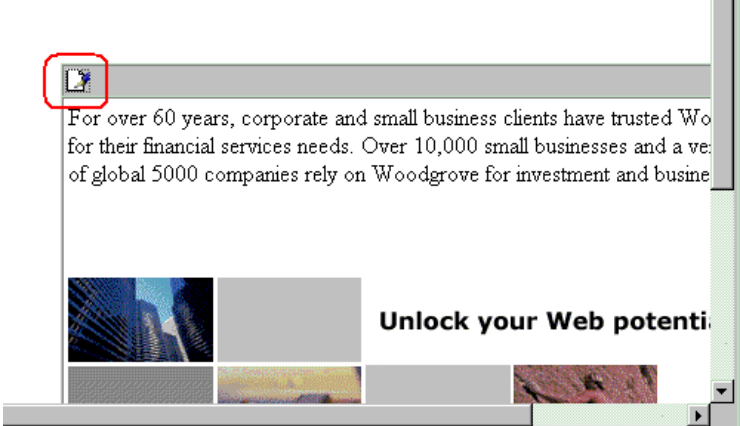


7. After you bind the placeholder to a definition, the **PlaceholderToBind** value appears within the placeholder.



Inline versus Popup Editors

eWebWP can be inserted onto a page either *inline* or as a *popup*.

Editor type	Description	Image
inline	displays the toolbar and content in WYSIWYG mode	
popup	initially displays a single icon where the toolbar normally appears, and content appears as published. When the user clicks the icon, a new window appears with the toolbar and content in WYSIWYG mode.	

Use the `PreferredType` field in the editor properties to determine the editor format. To create an inline editor, set `PreferredType` to **flash**. To create an popup editor, set `PreferredType` to **section**.

Using oncreate to Customize eWebWP

If you are using Microsoft Content Management Server (MCMS) 2002 and want to customize an instance of the **eWebWP** editor on a page, you cannot add inline JavaScript as you can on other platforms.

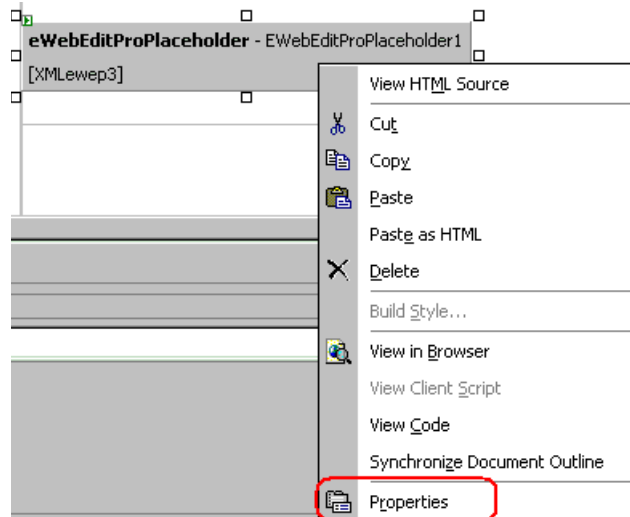
With MCMS 2002, you do not explicitly include the `ewebwp.js` file prior to using the 'eWebWP' JavaScript object. If you are accustomed to working with the integrated development environment (IDE) in design mode rather than viewing the tags, it is easier to centralize customizations in one file than it is to insert client-side SCRIPT tags before each editor.

TIP: To customize *all* instances of **eWebWP**, modify the parameter values in the `ewebwpdefaults.js` file. These values apply to all editors on all pages.

Customizing eWebWP Parameters

With MCMS 2002, an editor appears wherever the **eWebWP** placeholder is positioned on a page. Some parameters are available in VisualStudio.NET's Properties dialog when you edit the page and select an **eWebWP** placeholder. You can modify several properties of an instance of the **eWebWP** editor within MCMS 2002 by

1. Selecting the **eWebWP** placeholder.
2. Right clicking the mouse and selecting properties.



The following table describes properties that you can edit from here.

Property	Type	For more information, see
CustomSavelcon	String	The section of the eWebWP Developer's Reference Guide "Customizing the Save icon."
Default Font Color	String	The section of the eWebWP Developer's Reference Guide "Presetting font face, size and color"
Default Font Name	String	The section of the eWebWP Developer's Reference Guide "Presetting font face, size and color"
Default Font Size	String	The section of the eWebWP Developer's Reference Guide "Presetting font face, size and color"
Placeholder ToBind	Choice	"Inserting a Placeholder for eWebWP" on page 25
Preferred Type	Choice	"Inline versus Popup Editors" on page 26
AsXHTML	String	The section of the eWebWP Developer's Reference Guide "XHTML filtering"
Path	String	The directory to which eWebWP is installed. By default, eWebWP is installed to <code>ewebwp</code> . Only change this property if you installed to a different directory.

Uninstalling from a Server

To remove **eWebWP** from a server that was installed using the .exe file, follow these steps.

1. Close any open sessions of **eWebWP**.
2. Click on Windows **Start** button > **Settings** > **Control Panel** > **Add/Remove Programs**.
3. Select a release of **eWebWP** and click **Change/Remove**.
4. Follow the screen instructions to complete the removal.

Index

B

- browser
 - requirements, 3
 - hardware, 3
 - Web server, 3
- browser requirements, 3

C

- client hardware and operating system required, 3

H

- hardware requirements, 3
- host name, updating relative path, 11

I

- installation
 - client, 14
 - windows server, 7
 - testing, 13
- integrating eWebWP on a Web page, 20

K

- keys, license see license keys

L

- license keys, 4
 - domains supported, 6
 - domains where used, 6
 - format, 4
 - how eWebEditPro checks, 5
 - inserting, 4
 - invalid key message, 5
 - registering domains, 6

M

- multiedit database sample, 16

O

- operating system requirements, server, 3

P

- path, relative to host name, updating, 11

R

- relative path to host name, updating, 11
- requirements, 1

S

- sample code, 16
- sample files
 - multiedit, 16
- server hardware and operating system required, 3
- server, operating system requirements, 3
- servers
 - uninstalling from, 30
 - system requirements, 3

U

- uninstalling servers, 30

W

- Web server requirements, 3